



1 Brigadier Walk, London, SE18 6DB

£480 Per Week

Dunton apartments, the latest building to complete in the sought after Royal Arsenal development

ONE BEDROOM APARTMENT

Set over 588 sq feet, 5th floor, spacious bedroom, luxury bathroom, balcony.

Partial river views

FURNISHED TO A HIGH STANDARD
FULL USE OF THE WATERSIDE CLUB POOL, GYM & SPA

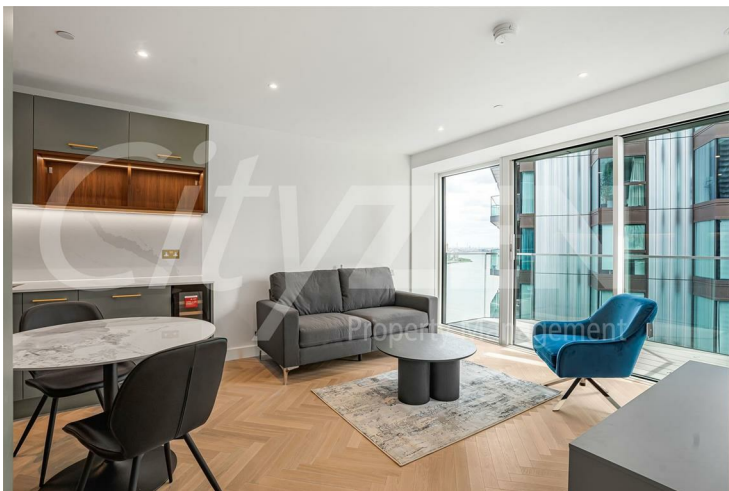
AVAILABLE NOW
FURNISHED

- ROYAL ARSENAL DEVELOPMENT
- SET OVER 588 SQUARE FEET
- FULL USE OF WATERSIDE HEALTH CLUB
- AMPLE STORAGE SPACE THROUGHOUT APARTMENT
- BRAND NEW ONE BED APARTMENT
- LOCATED ON THE 9TH FLOOR OF DUNTON APTS
- STATION, SUPERMARKETS & RESTAURANTS ON SITE
- PARTIAL RIVER VIEWS
- BALCONY WITH PARTIAL RIVER VIEWS
- FURNISHED TO A HIGH STANDARD & AVAILABLE NOW

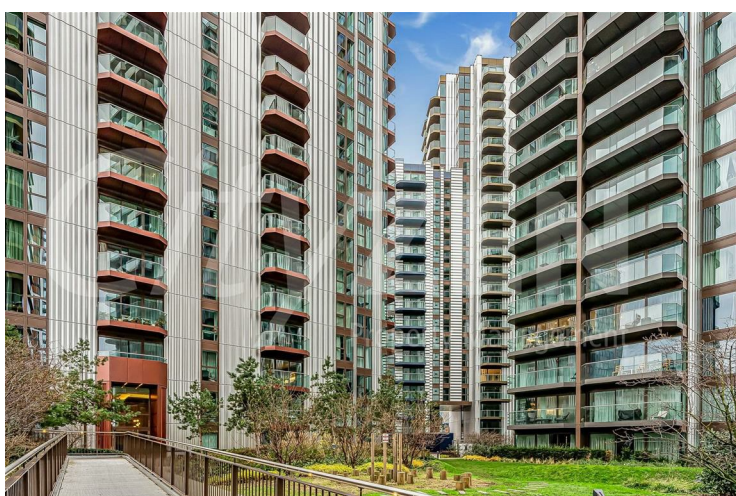
1 Brigadier Walk, London, SE18 6DB



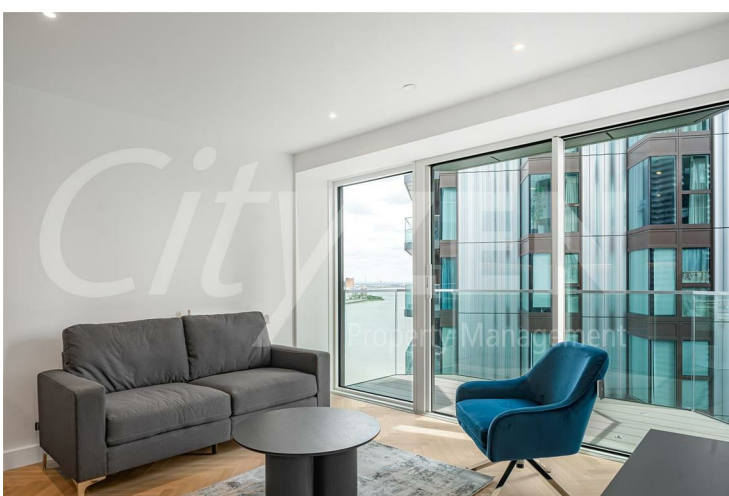
DUNTON APARTMENTS



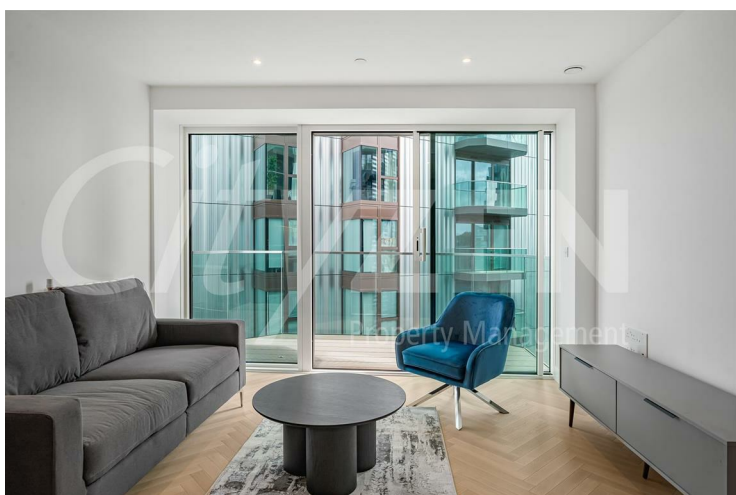
RECEPTION



DUNTON APARTMENTS



RECEPTION



RECEPTION



KITCHEN

1 Brigadier Walk, London, SE18 6DB



KITCHEN



BEDROOM



BATHROOM



BEDROOM



HALLWAY



BEDROOM

1 Brigadier Walk, London, SE18 6DB



BEDROOM



RECEPTION



HALLWAY



RECEPTION/BATHROOM



HALLWAY

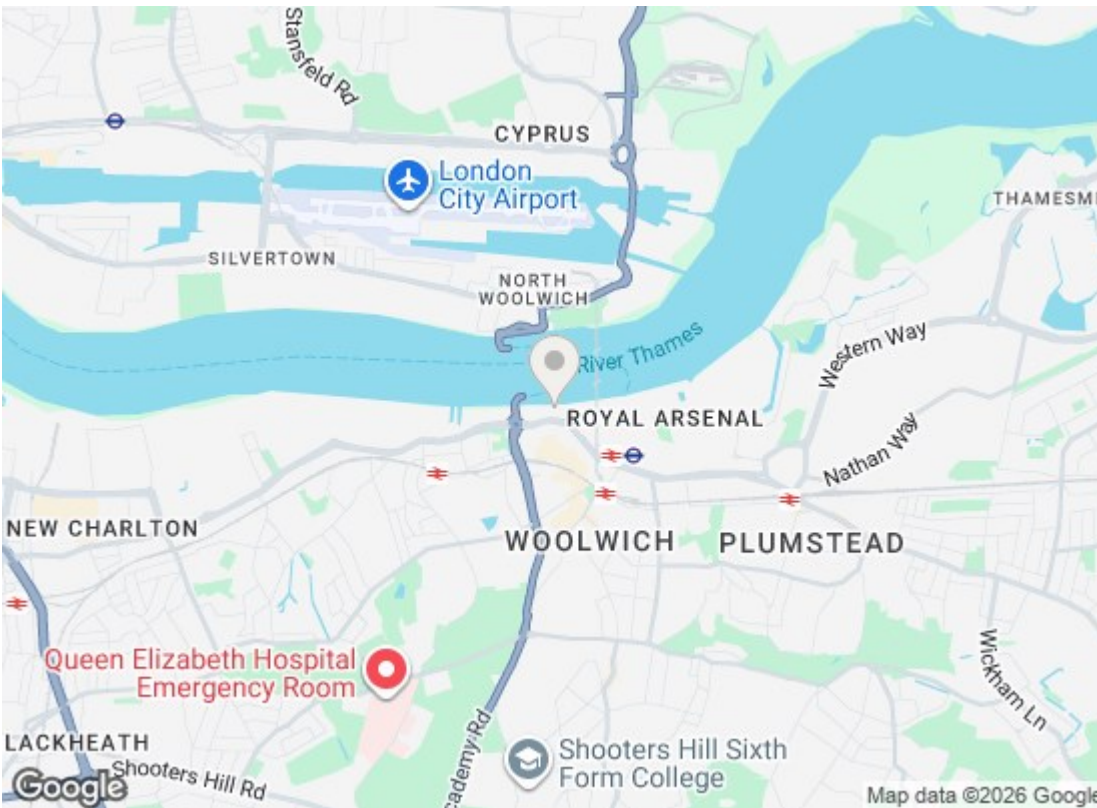
Approximate Gross Internal Area 588 sq ft - 55 sq m



Ninth Floor



Floor plan produced in accordance with RICS Property Measurement 2nd Edition. Although Pink Plan Ltd ensures the highest level of accuracy, measurements of doors, windows and rooms are approximate and no responsibility is taken for error, omission or misstatement. These plans are for representation purposes only and no guarantee is given on the total square footage of the property within this plan. The figure icon is for initial guidance only and should not be relied on as a basis of valuation.



Energy Efficiency Rating		
	Current	Potential
Very energy efficient - lower running costs		
(92 plus) A		
(81-91) B	84	84
(69-80) C		
(55-68) D		
(39-54) E		
(21-38) F		
(1-20) G		
Not energy efficient - higher running costs		
England & Wales		EU Directive 2002/91/EC
Environmental Impact (CO ₂) Rating		
	Current	Potential
Very environmentally friendly - lower CO ₂ emissions		
(92 plus) A		
(81-91) B		
(69-80) C		
(55-68) D		
(39-54) E		
(21-38) F		
(1-20) G		
Not environmentally friendly - higher CO ₂ emissions		
England & Wales		EU Directive 2002/91/EC

We have prepared these property particulars as a general guide to a broad description of the property. They are not intended to constitute part of an offer or contract. We have not carried out a structural survey and the services, appliances and specific fittings have not been tested. All photographs, measurements, floorplans and distances referred to are given as a guide only and should not be relied upon for the purchase of carpets or any other fixtures or fittings. Lease details, service charges and ground rent (where applicable) and council tax are given as a guide only and should be checked and confirmed by your Solicitor prior to exchange of contracts.