



GREYSHOTT

Drakes close, Esher, Surrey KT10



A 1930S DETACHED HOME

Set within a private road and renovated by the current owner.



Local Authority: Elmbridge Borough Council

Council Tax band: G

Tenure: Freehold



KEY FEATURES

- *4/5 bedrooms
- *4 bathrooms
- *Double-height kitchen with exposed beams
- *Master bedroom with views over the copse
- *West facing garden
- *Potential to extend (STPP)

Drakes Close is a quiet gated private estate overlooking a large central woodland copse. The copse is communally owned by the residents of Drakes Close and is a unique setting, perfect for families with children. The property is located within a short distance of Esher High Street, with an excellent range of restaurants and shops including Waitrose, Cote, Giggling Squid, and The Good Earth. There is an Everyman Cinema and Esher Theatre, along with a number of pubs and coffee shops, including Gails Bakery.











LOCATION

Nearby is the conservation area of West End Village which has its own pub, church, village green and duck pond, plus a village hall and local sports and social club. Garsons Farm has an extensive farm shop, pick your own fields, garden centre and restaurant.

Schooling in the area is superb with a large number of excellent state and private schools in the immediate vicinity including Claremont Fan Court, Shrewsbury House, Rowan, Esher Church School and Esher High School. The American Community School (ACS), Reeds School and Danes Hill School are also easily accessible.

Rail links are excellent with a fast and frequent service to London Waterloo. The nearby A3 provides access to London, Guildford, the M25, Heathrow and Gatwick airports.

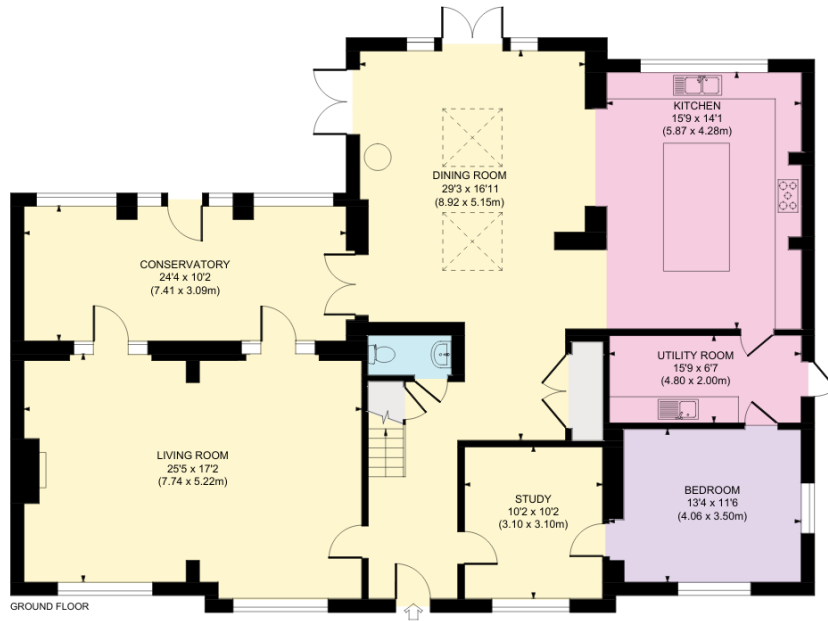
There is a great choice of local recreational activities with Sandown Park offering horse racing, summer concerts, skiing, golf, go karting, gym and squash. Hampton Court Palace, National Trust Claremont Landscape Gardens and RHS Wisley are close by.



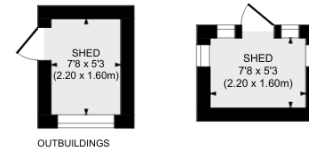
In accordance with Section 21 of The Estate Agents Act 1979 (Declaration of Interest), please note that the vendor for this property is an Associate of Knight Frank.



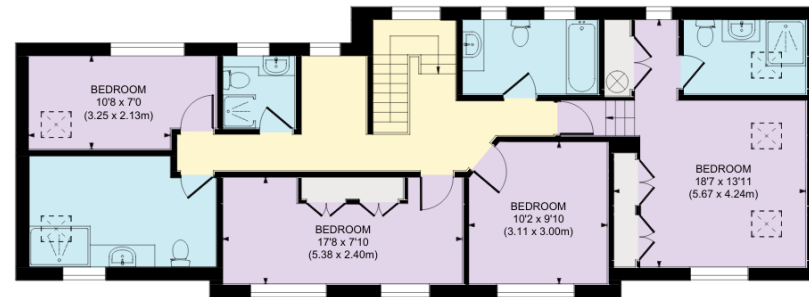
Approximate Gross Internal Area
 Main House 3,063 sq. ft / 284.58 sq.m
 Outbuildings 77 sq. ft / 7.15 sq. m
 Total 3,140 sq. ft / 291.73 sq. m



GROUND FLOOR



OUTBUILDINGS



FIRST FLOOR

This plan is for layout guidance only. Not drawn to scale unless stated. Windows and door openings are approximate. Whilst every care is taken in the preparation of this plan, please check all dimensions, shapes and compass bearings before making any decisions reliant upon them. (ID767266)

Maisie Bywater

01372 230 466

maisie.bywater@knightfrank.com

Knight Frank Esher

47 High St, Esher KT10 9RL

knightfrank.co.uk



Your partners in property

1. Particulars: These particulars are not an offer or contract, nor part of one. You should not rely on statements given by Knight Frank in the particulars, by word of mouth or in writing ("information") as being factually accurate about the property, its condition or its value. Neither Knight Frank nor any joint agent has any authority to make any representations about the property, and accordingly any information given is entirely without responsibility on the part of Knight Frank. 2. Material Information: Please note that the material information is provided to Knight Frank by third parties and is provided here as a guide only. While Knight Frank has taken steps to verify this information, we advise you to confirm the details of any such material information prior to any offer being submitted. If we are informed of changes to this information by the seller or another third party, we will use reasonable endeavours to update this as soon as practical. 3. Photos, Videos etc: The photographs, property videos and virtual viewings etc. show only certain parts of the property as they appeared at the time they were taken. Areas, measurements and distances given are approximate only. 4. Regulations etc: Any reference to alterations to, or use of, any part of the property does not mean that any necessary planning, building regulations or other consent has been obtained. A buyer must find out by inspection or in other ways that these matters have been properly dealt with and that all information is correct. 5. Fixtures and fittings: A list of the fitted carpets, curtains, light fittings and other items fixed to the property which are included in the sale (or may be available by separate negotiation) will be provided by the Seller's Solicitors. 6. VAT: The VAT position relating to the property may change without notice. 7. To find out how we process Personal Data, please refer to our Group Privacy Statement and other notices at <https://www.knightfrank.com/legals/privacy-statement>.

Particulars dated May 2026. Photographs and videos dated May 2026. All information is correct at the time of going to print. Knight Frank is the trading name of Knight Frank LLP. Knight Frank LLP is a limited liability partnership registered in England and Wales with registered number OC305934. Our registered office is at 55 Baker Street, London W1U 8AN. We use the term 'partner' to refer to a member of Knight Frank LLP, or an employee or consultant. A list of members names of Knight Frank LLP may be inspected at our registered office. If you do not want us to contact you further about our services then please contact us by either calling 020 3544 0692, email to marketing.help@knightfrank.com or post to our UK Residential Marketing Manager at our registered office (above) providing your name and address.

