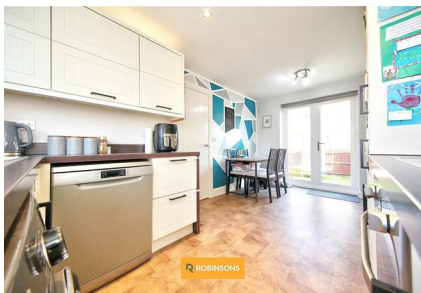
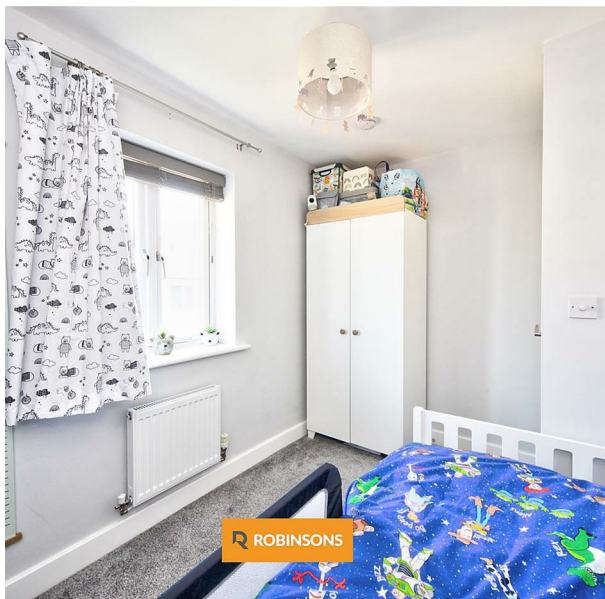
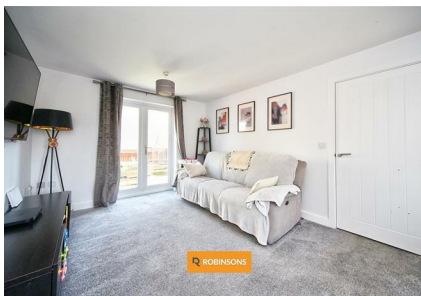
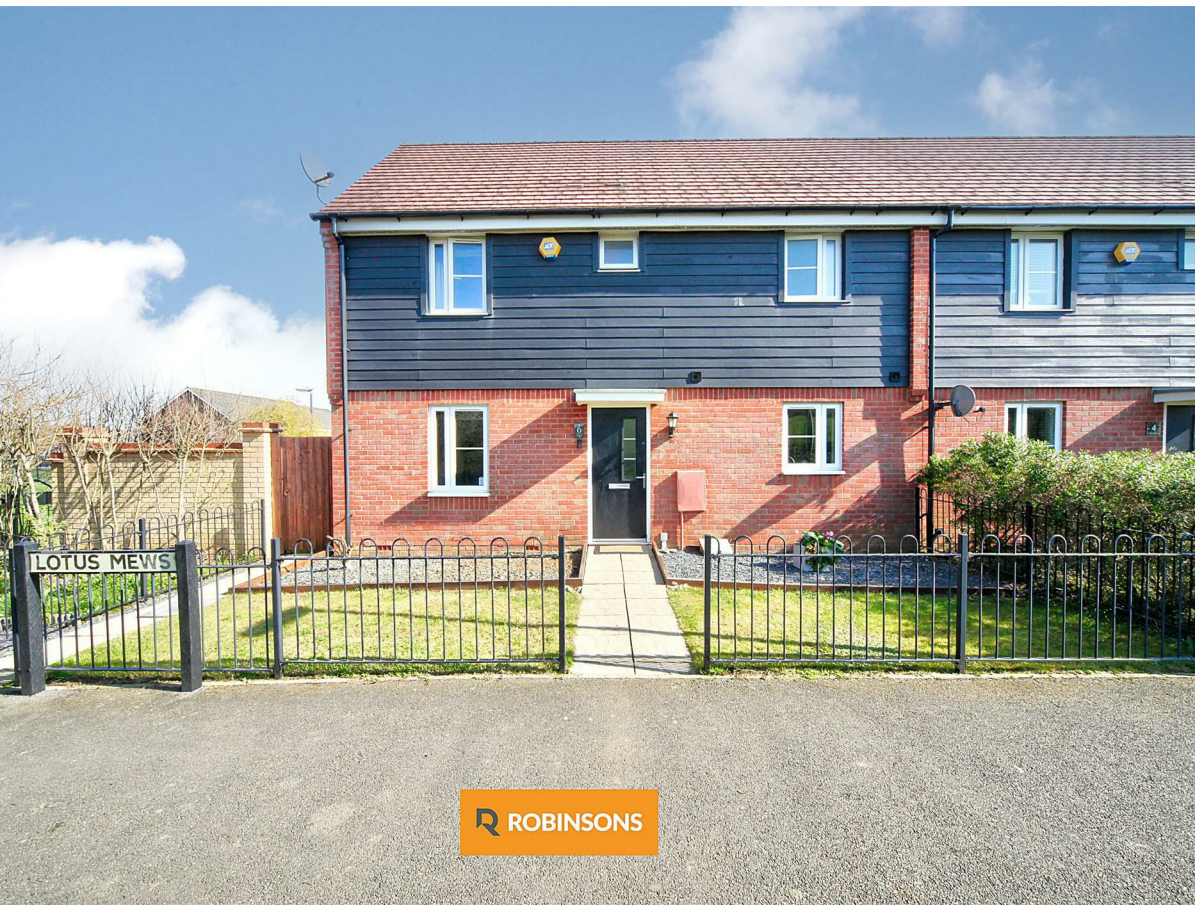


6 Lotus Mews, Dunstable, LU6 1FP
£325,000

ROBINSONS



AN IMMACULATELY PRESENTED THREE BEDROOM FAMILY HOME WITH GARAGE, OFF ROAD PARKING AND A STYLISH KITCHEN DINER, SITUATED ON A MODERN AND HIGHLY SOUGHT AFTER DEVELOPMENT IN NORTH DUNSTABLE.

This superb home is perfect for families, first time buyers, or those looking to upsize, offering spacious and well designed accommodation throughout.

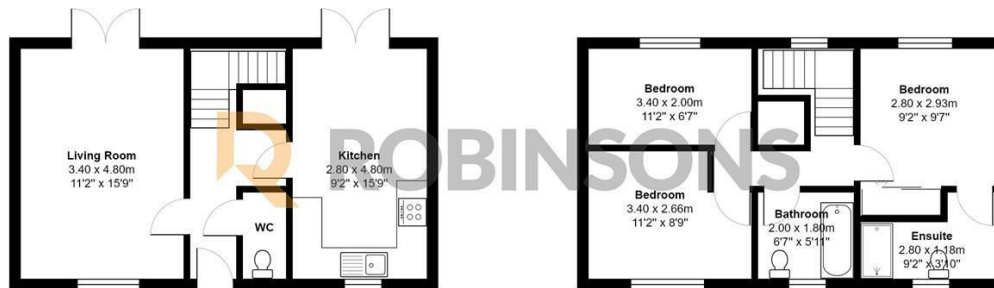
The ground floor comprises a bright and generous living room, a modern kitchen diner with ample storage and dining space leading onto the rear garden, plus a convenient downstairs cloakroom.

Upstairs offers three well proportioned bedrooms, including a principal bedroom with en suite shower room, alongside a contemporary family bathroom.

Externally, the property benefits from off road parking, a garage, and a private rear garden, ideal for entertaining or relaxing.



20 West Street
Dunstable
Bedfordshire
LU6 1SX
01582 661112
sales@robinsons-estates.co.uk
<https://www.robinsons-estates.co.uk>



Total Area: 81.4 m² ... 876 ft²

Floorplan produced by Woodside Photography
Floorplan is for illustration purposes only and all measurements are approximate

