
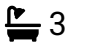



Busby Lane, Kirkby-in-Cleveland, Middlesbrough, TS9 7AR

Guide Price £995,000

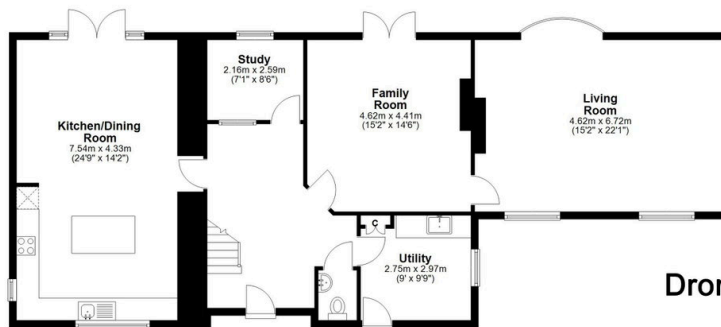
 4  3  3



The Yorkshire Property Agency are absolutely delighted to introduce this fabulous newly-refurbished small-holding located just outside the popular North Yorkshire village of Kirkby-in-Cleveland. The property benefits from huge potential to extend further and develop (STPP) and boasts surrounding grass and woodland of approximately 5 acres in addition to a series of stone-built and brick-built barns and stables.

Key Features

- Fantastic smallholding
- Huge potential for multi-generational living and further development
- Approximately 5 acres of grassland and woodland.
- Series of stone-built and brick-built barns and stables
- Huge potential to develop (STPP)
- Chain-free sale
- South-facing plot
- Unobstructed views of the North Yorkshire Moors
- A short drive to the amenities of Stokesley and Yarm
- Attractive surrounding gardens



Dromondby Grange Farm
Busby Lane

Ground Floor



First Floor

Whilst every attempt has been made to ensure the accuracy of the floorplans contained here, measurements of doors, windows, rooms and any other items are approximate and no responsibility is taken for any error, omission or mis-statement. This plan is not drawn to scale and is for illustrative purposes only & should be used as such by any prospective purchaser. Created especially by Vue3sixty Ltd