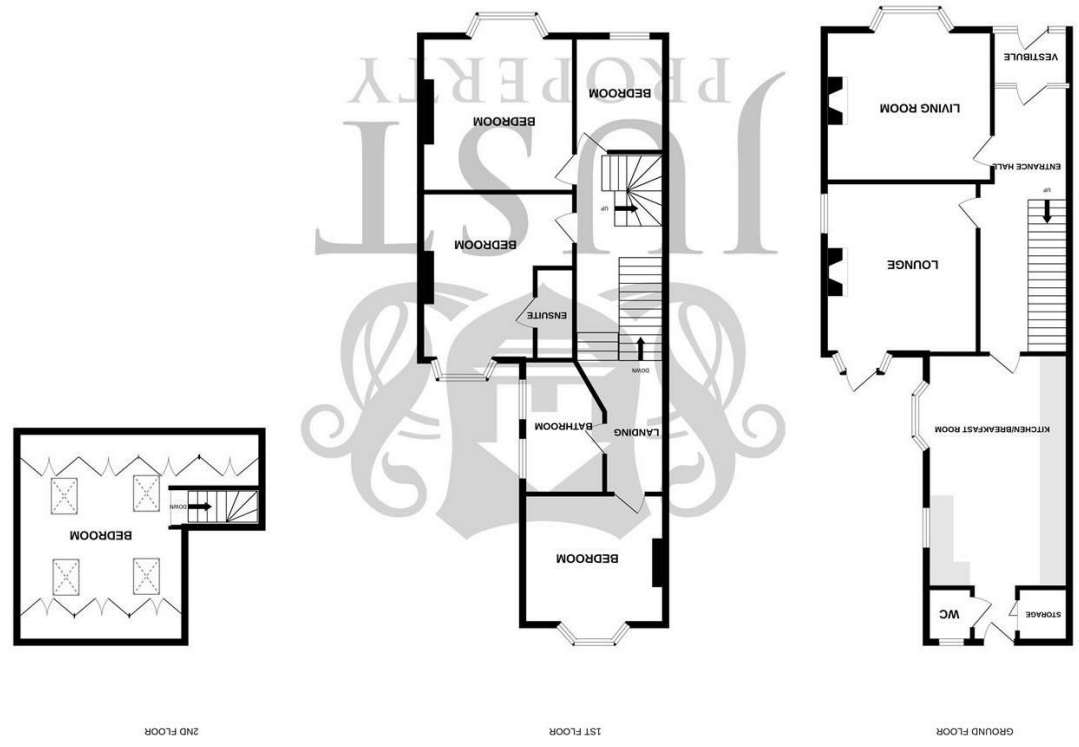


England & Wales	
EU Directive 2002/91/EC	
Very energy efficient - lower running costs	A (92 plus)
	B (81-91)
	C (69-80)
	D (55-68)
	E (39-54)
	F (21-38)
Not energy efficient - higher running costs	G (1-20)
Current	4.5
Potential	80



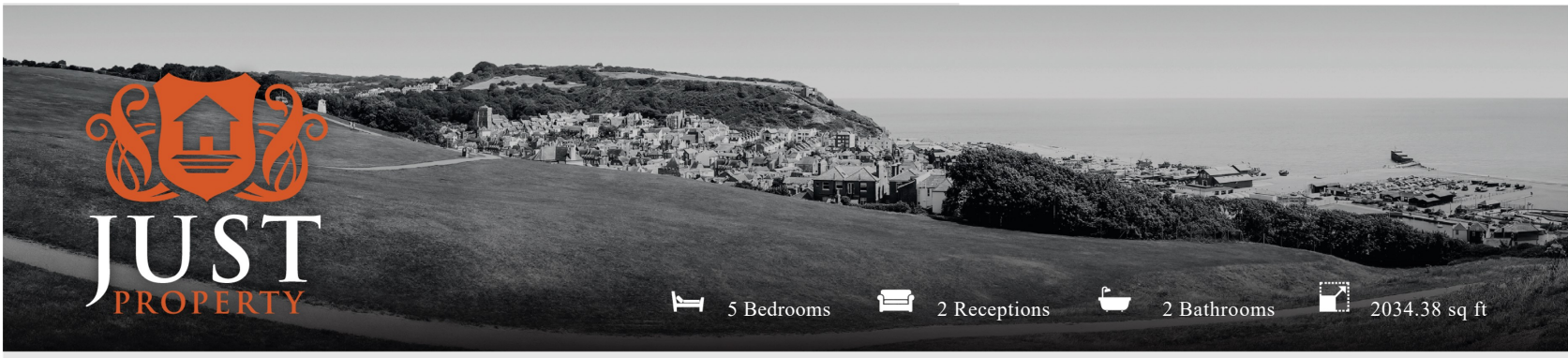
While every attempt has been made to ensure the accuracy of the floorplans contained here, measurements of doors, windows, rooms and any other area approximates and no responsibility is taken for errors, omissions or mis-statements. This plan is illustrative purposes only and should be used as such for any prospective purchaser. The services, systems and appliances shown have not been tested and no guarantee is given as to their operability or efficiency can be given. Made with Metropix ©2025



FLOORPLANS

107 St. Helens Road, Hastings, TN34 2EL

www.justproperty.net



5 Bedrooms 2 Receptions 2 Bathrooms 2034.38 sq ft

107 St. Helens Road, Hastings, TN34 2EL

Freehold

£650,000





5 Bedrooms 2 Receptions 2 Bathrooms 2034.38 sq ft

PROPERTY DETAILS

Just Property is delighted to offer this superb older-style semi-detached home, ideally located directly adjacent to the picturesque Alexandra Park. The property enjoys a level setting within easy reach of Hastings town centre, which offers a comprehensive range of shopping, sporting, and recreational facilities, as well as a mainline railway station. Local bus routes are also easily accessible, making this a highly convenient yet peaceful location.

The ground floor offers generously proportioned accommodation, including a welcoming entrance hall with storage beneath the stairs, a spacious Living Room with bay window, feature fireplace, ceiling rose, and cornice detailing, and a large lounge also with a bay window and period features. The 19' kitchen/breakfast room is fitted with a modern range of base and wall units. Completing the ground floor is a useful rear lobby and a cloakroom.

On the first floor, the property comprises four bedrooms, including a master suite with en-suite shower room, a further bay-fronted bedroom with views over Alexandra Park, and two additional well-sized bedrooms. The family bathroom is fitted with a roll-top bath, separate shower, underfloor heating, and contemporary fittings.

The second floor offers a fifth bedroom with Velux windows to the front and rear aspects and built-in eaves storage, providing flexible accommodation ideal for a home office, guest suite, or additional bedroom.

Externally, the property benefits from a block-paved driveway providing off-road parking, while the rear garden is a particular feature of the home. It includes a patio area, lawn, mature flowerbeds, trees and shrubs, a brick-built playhouse, a large outbuilding, and side access, creating a wonderful outdoor space for entertaining or family life.

This character home, in a highly sought-after must be viewed to be fully appreciated. Contact Just Property to book a viewing 01424 444100.



ROOM DIMENSIONS

Front Door	Bathroom
Vestibule	9'9" x 9'4" (2.99 x 2.87)
Entrance Hall	Bedroom
Living Room	16'9" x 12'7" (5.12 x 3.84)
15'5" x 13'10" (4.72 x 4.23)	Bedroom/ Office
Lounge	9'10" x 8'4" (3.02 x 2.55)
16'2" x 14'7" (4.93 x 4.45)	Stairs to Second Floor
Kitchen Breakfast Room	Bedroom
19'4" x 11'9" (5.89m x 3.58m)	15'3" x 14'3" (4.66 x 4.36)
Storage Cupboard	Patio Area
Downstairs W.C	Rear Garden
Stairs to First Floor Landing	Art Studio
Bedroom	Brick Built Storage
16'0" x 14'7" (4.89 x 4.45)	Off Road Parking
En-Suite Shower Room	
Bedroom	
11'11" x 12'4" (3.64 x 3.77)	

FEATURES

- Semi Detached House
- Five Bedrooms
- En-Suite to Master Bedroom
- Two Reception Rooms
- 19'4" x 11'9" Kitchen Breakfast Room
- Large Rear Garden
- Sought After Location
- Off Road Parking
- Well Presented Throughout
- Close to Local Amenities & Mainline Railway Station

