

## Rawstorne Street, EC1V

### £475,000

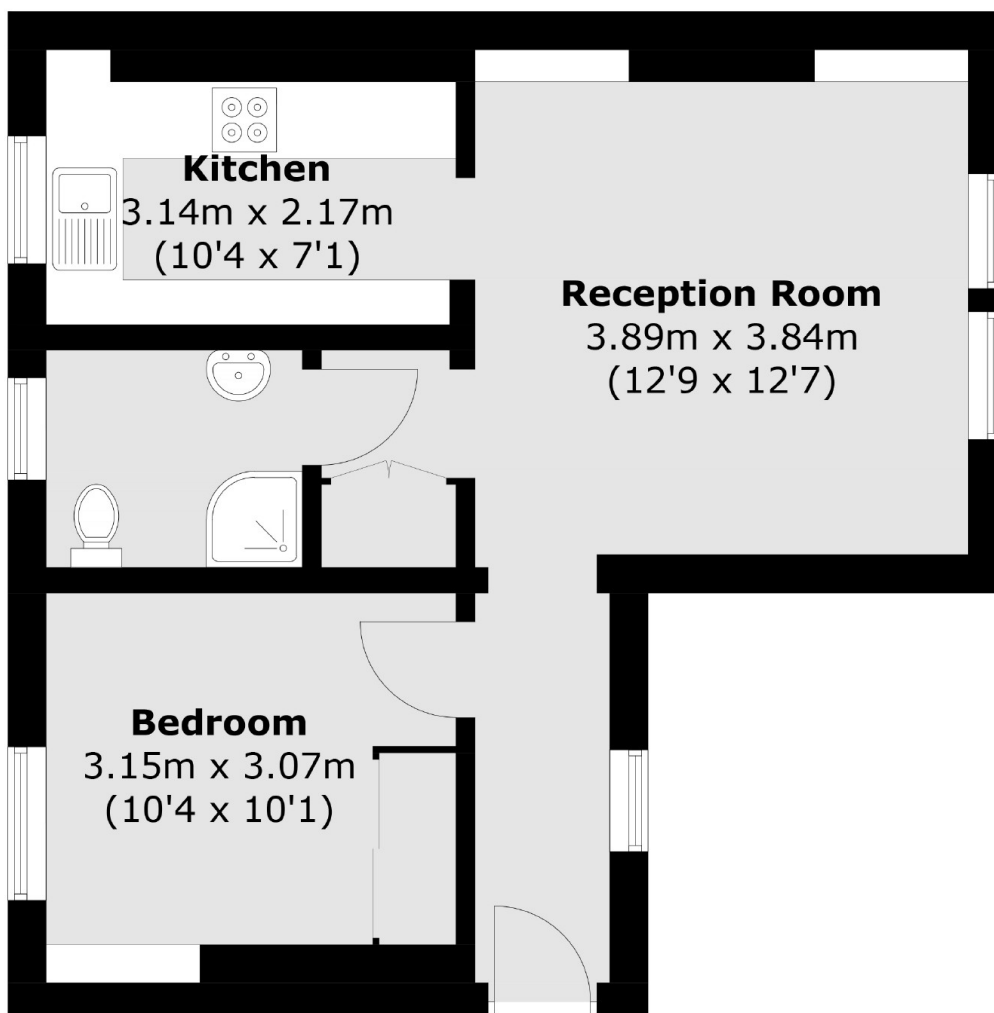
This one bedroom apartment is set in this beautiful grade two listed building built in the 1870's-1880's by the Brewers' Company. Being sold chain free the property featuring semi open-plan living and kitchen, lovely sash windows and a stunning communal roof terrace.

In prime central Angel with regular buses into central London and the City on the doorstep and only moments from Angel underground (Northern Line) this property is ideally located for a range of amenities.

### Features

- Chain Free
- Roof Terrace
- Open-Plan Living
- Smart Communal Areas
- Sash Windows
- Listed Building

# Rawstorne Street, London, EC1V



Total area (approx.): 43.3 sq. m (466.1 sq. ft)