

# SNELLERS

ESTATE AGENTS



## The Brooklands, TW7

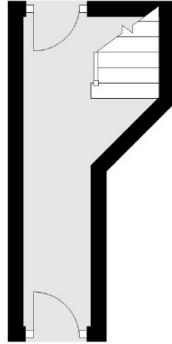
£425,000

A beautifully presented three-bedroom first-floor apartment, offering in excess of 800 sq ft of bright and spacious living accommodation, ideally situated on the sought-after Eversley Crescent in Isleworth.

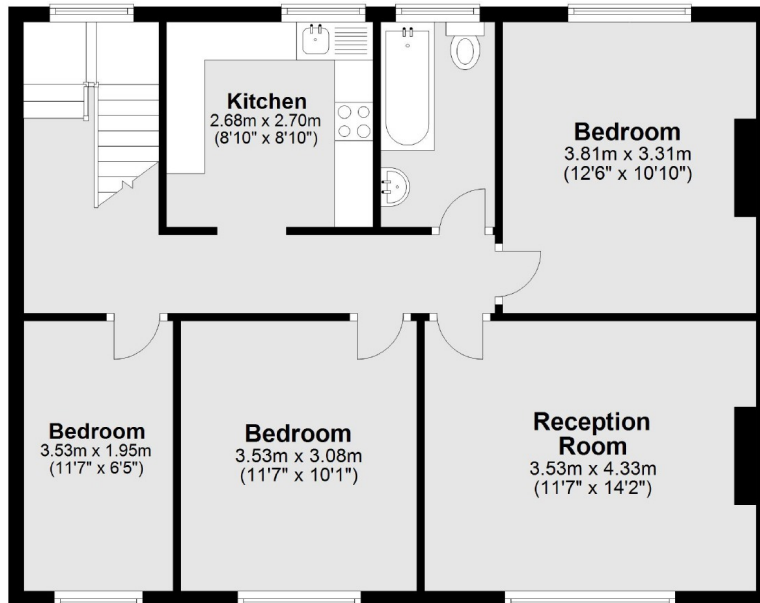
Eversley Crescent is well placed for easy access to Isleworth railway station, Osterley Underground station and Hounslow East Underground station (Piccadilly Line). The shops and amenities of Isleworth are within easy walking distance, while the vibrant town centres of St Margarets and Richmond are also close by.

- First Floor • Three Bedrooms • Over 800 sq.ft •
- Good Condition • Long Lease • Excellent Location •

## Ground Floor



## First Floor



Total area: approx. 76.0 sq. metres (818.5 sq. feet)

Snellers St. Margarets Sales  
36 Crown Road  
St Margarets  
TW1 3EH  
020 8892 8008  
stmargaretssales@snellers.co.uk

Energy Rating: C We aim to make our particulars both accurate and reliable. However they are not guaranteed; nor do they form part of an offer or contract. If you require clarification on any points then please contact us, especially if you're traveling some distance to view. Please note that appliances and heating systems have not been tested and therefore no warranties can be given as to their good working order