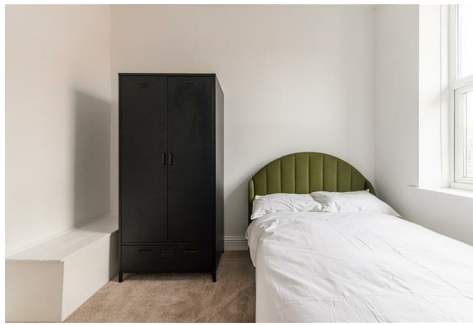




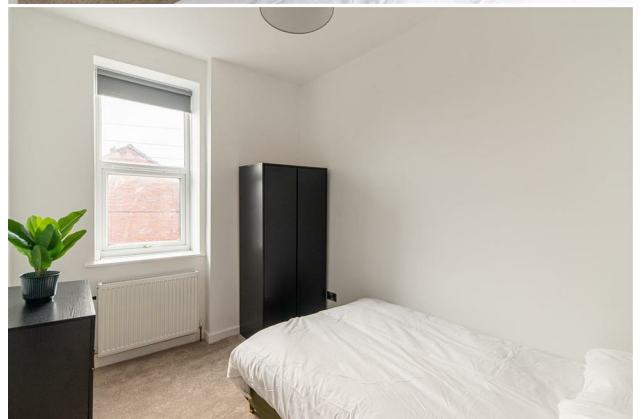
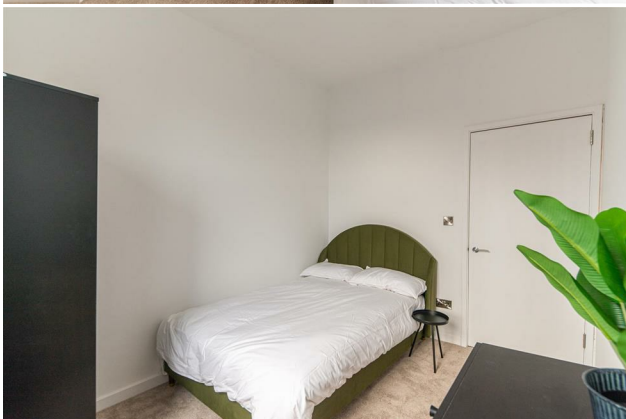
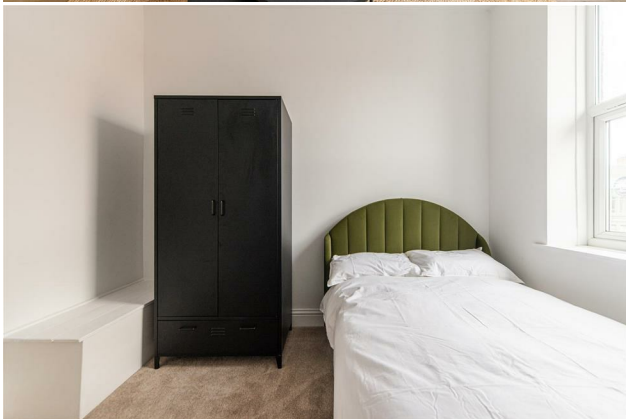
HIVE ESTATES



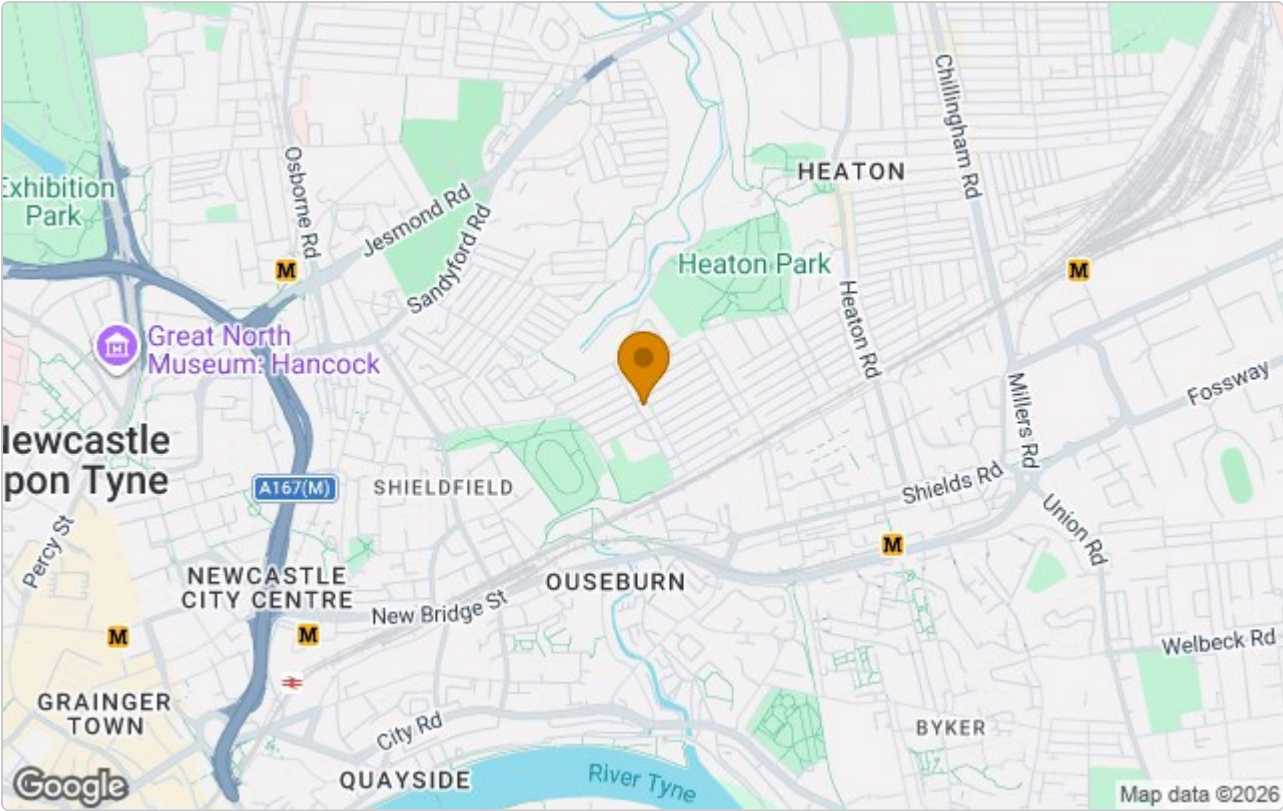
89 Stratford Road, Newcastle Upon Tyne, NE6 5PD

£1,200 Per Month

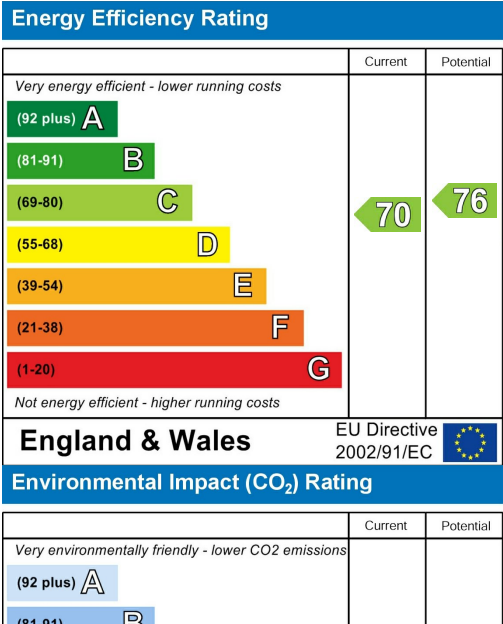
Available Now | £1200 per month | Hive Estates presents to the market a brand new refurbished flat to rent in the sought after location of Heaton. This flat has been fully refurbished throughout with a high spec and design. The kitchen and living room has been renovated into a beautiful open plan space. The contemporary kitchen is fully integrated with brand new appliances and ample storage. The bright and spacious living area includes new furniture that compliments the space perfectly. There are two cosy double bedrooms in the property and a modern tiled bathroom with a walk in shower. Externally there is a rear private yard and free on street parking. Heaton is a popular, vibrant area with many cafe's, restaurants and bars and Stratford Road is in the heart of this.



Area Map



Energy Efficiency Graph



These particulars, whilst believed to be accurate are set out as a general outline only for guidance and do not constitute any part of an offer or contract. Intending purchasers should not rely on them as statements of representation of fact, but must satisfy themselves by inspection or otherwise as to their accuracy. No person in this firms employment has the authority to make or give any representation or warranty in respect of the property.