



Guide Price
£1,000,000

Freehold

5x  3x  3x 

**Teazle Meade,
Thornwood, Epping,
Essex, CM16**

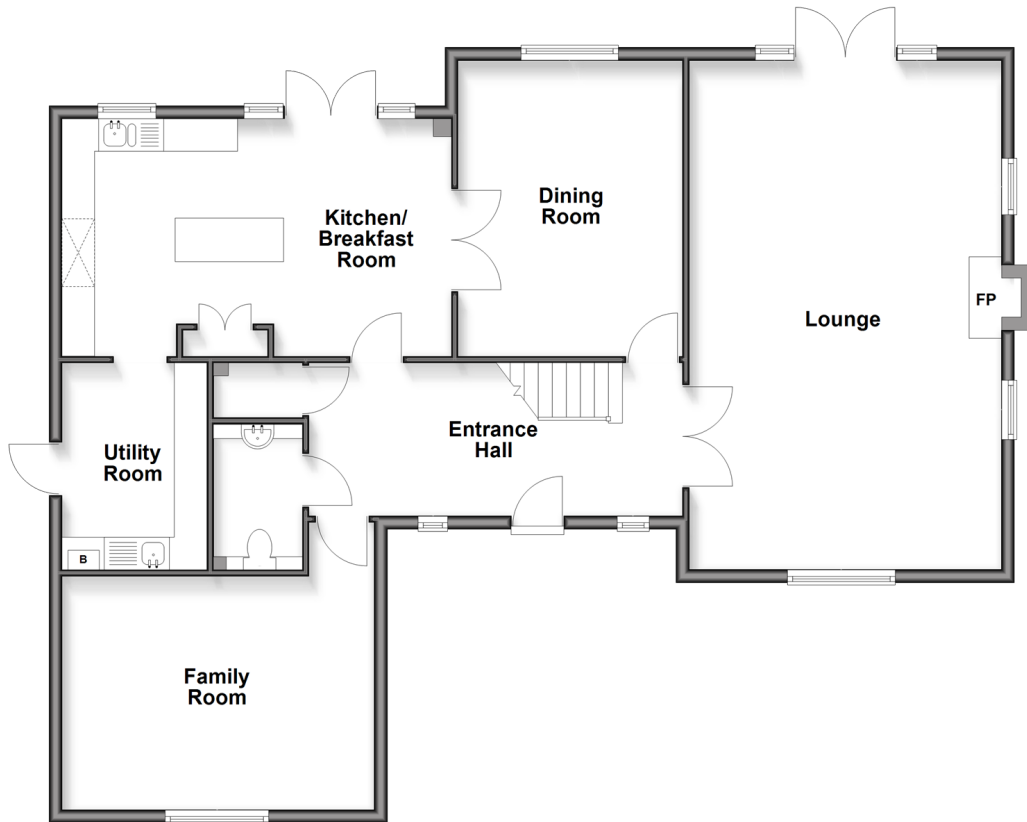
OVER 60?

Secure this property
for up to **59% less!**

 **DOUGLAS
ALLEN**
Helping you move forwards

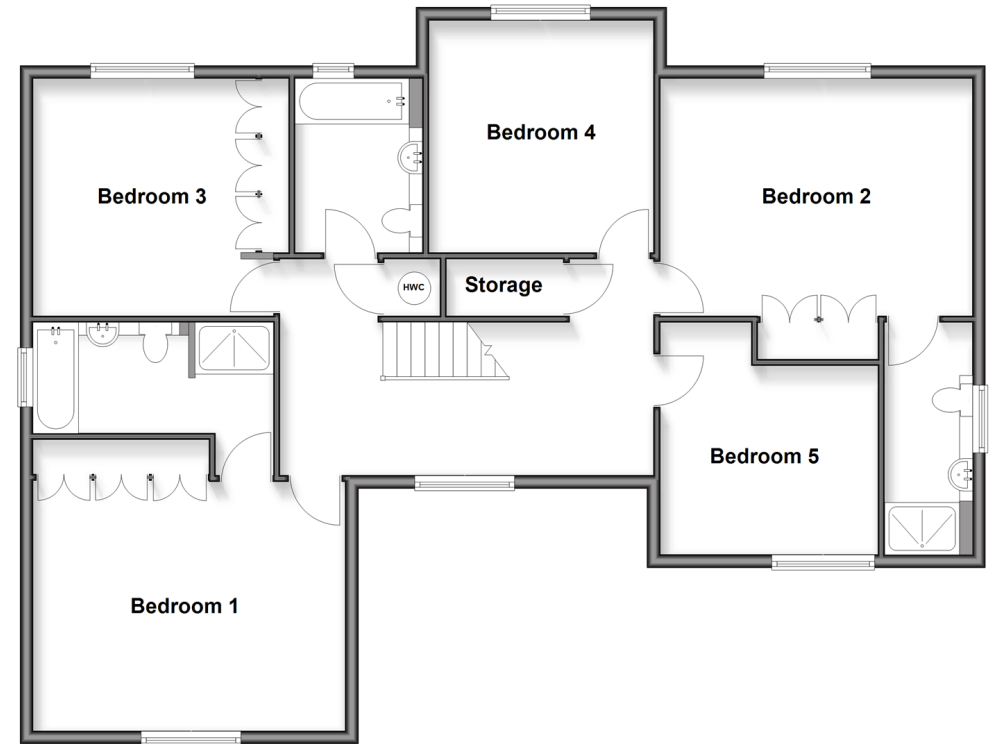
Ground Floor

Approx. 121.0 sq. metres (1302.1 sq. feet)



First Floor

Approx. 116.6 sq. metres (1255.5 sq. feet)



Accommodation

GROUND FLOOR

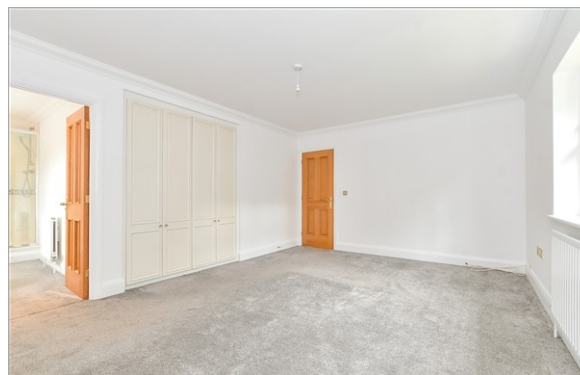
Entrance Hall
Cloakroom
Lounge : 23'8 x 15'8 (7.22m x 4.78m)
Dining Room : 14'9 x 11'3 (4.50m x 3.43m)
Family Room : 15'7 x 11'7 (4.75m x 3.53m)
Kitchen/Breakfast Room: 19'6 x 11'9 (5.95m x 3.58m)
Utility Room: 10'4 x 7'4 (3.15m x 2.24m)

FIRST FLOOR

Landing
Bedroom 1 : 15'8 x 15'1 (4.78m x 4.60m)
En-Suite Bathroom
Bedroom 2 : 19'9 x 12'2 (6.02m x 3.71m)
En-Suite Shower Room
Bedroom 3 : 11'7 x 11'3 (3.53m x 3.43m)
Bedroom 4 : 11'10 x 10'8 (3.61m x 3.25m)
Bedroom 5 : 10'1 x 9'3 (3.08m x 2.82m)
Bathroom

OUTSIDE

Garage
Off Street Parking
Front Garden
Rear Garden



Main features

- Situated in a semi rural location close to Epping town centre.
- Short drive to Epping Station
- Spacious accommodation, including separate lounge and dining room
- En-suite shower room & bathroom
- Double garage and off street parking



Nearest Schools

Primary Schools: Coopersale and Theydon Garnon C of E Voluntary Controlled Primary Sch 1.2 miles, Epping Primary 1.6 miles
Secondary Schools: St John's C of E Voluntary Controlled School 1.8 miles, Stewards School, Harlow 2.5 miles



Transport Information

Train Stations: Harlow Town 4.3 miles, Harlow Mill 4.8 miles, Roydon 5.3 miles
Underground Epping 1.9 miles, Theydon Bois 3.5 miles, Debden 5.5 miles



Address

Teazle Meade, Thornwood, Epping, Essex, CM16



Directions

For directions to this property please contact us.



Call Epping Branch 01992 560600 ■ douglasallen.co.uk



Unable to display material information. Please check with the branch for material information details for this property



51509286/20260418/RP/LA