

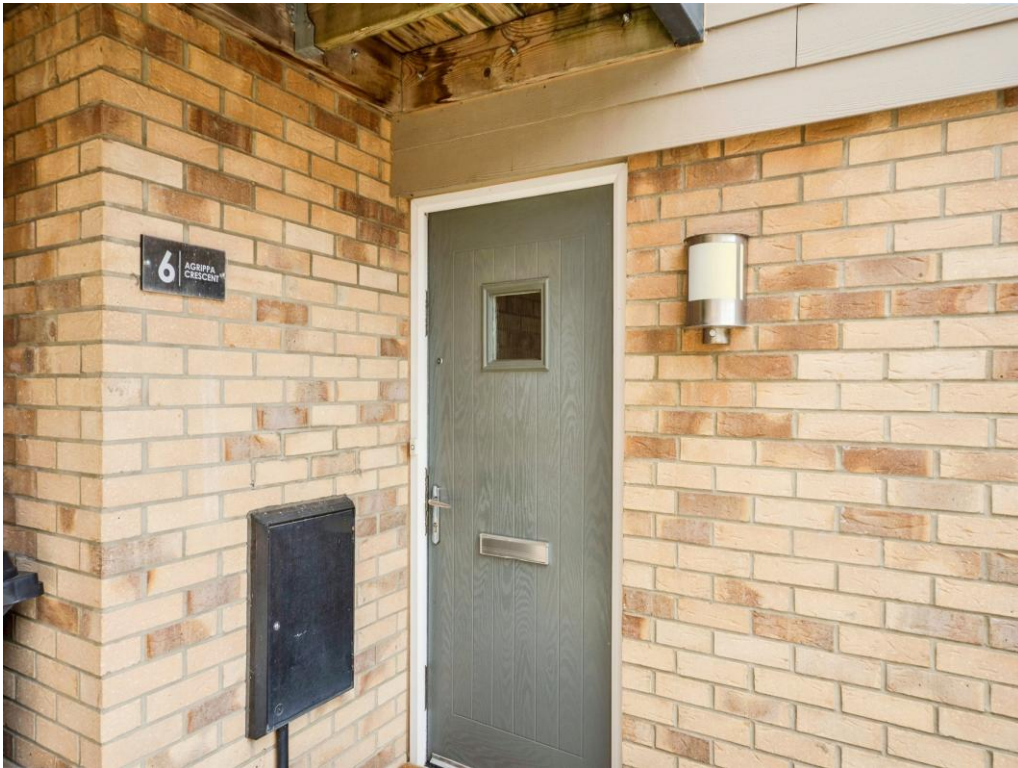


Connells

Agrippa Crescent
Fairfields Milton Keynes

Agrippa Crescent Fairfields Milton Keynes MK11 4AY

for sale
£255,000



Property Description

Situated in the sought-after Fairfield Close area of Stony Stratford, this unique one-bedroom detached home is a rare find.. Stylishly presented throughout, the property offers modern living with the added benefit of outdoor space and private parking.

The accommodation comprises an entrance hall, a spacious bedroom with built-in wardrobes, and a contemporary bathroom on the ground floor. Upstairs, you'll find a bright and airy open-plan living space incorporating the sitting room and fitted kitchen, complete with integrated appliances.

A standout feature of the property is the lovely balcony, providing pleasant open views and the perfect spot to relax and enjoy outdoor living.

Outside, the home benefits from off-road parking for one vehicle. Further features include double glazing, gas radiator heating, and an EPC rating of B.

This charming detached home offers a fantastic opportunity for first-time buyers, downsizers, or investors looking for something truly different in a desirable location.

Entrance Hall

Storage Cupboard, doors to accommodation.

Stairs raising to first floor.

Bedroom

Built in wardrobe. Window to side aspect.

Bathroom

Bath with overhead shower, WC and Sink Unit

First Floor

Kitchen / Dining/ Living

Windows to side and front aspect. Juliet balcony/ Door to balcony. Fully fitted kitchen with a range of wall and base units and built in appliances.

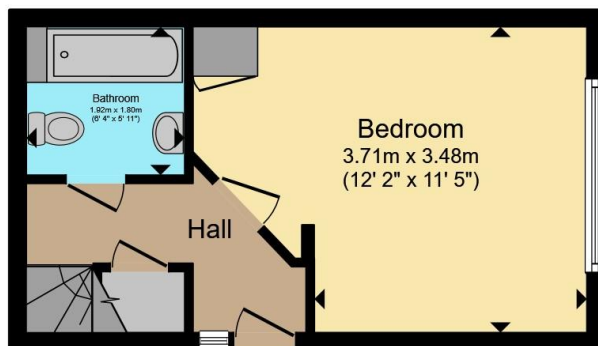
Balcony

Large balcony provide outdoor space.

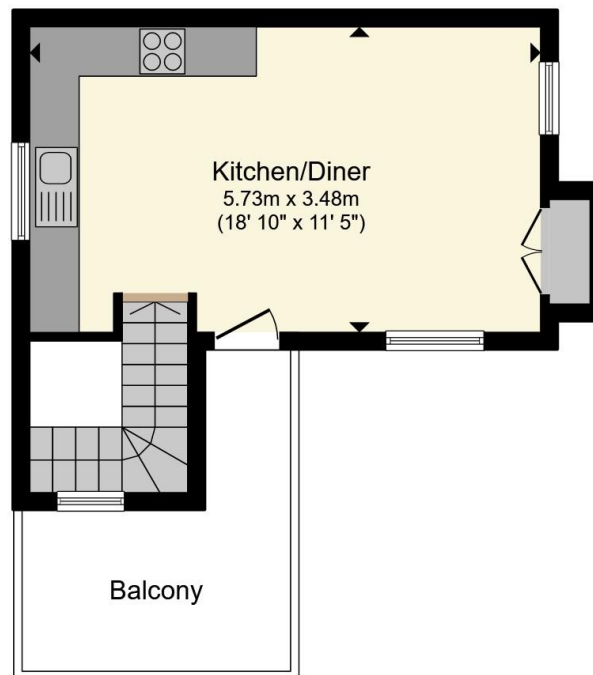








Ground Floor



First Floor

Total floor area 52.7 m² (567 sq.ft.) approx

This floor plan is for illustrative purposes only. It is not drawn to scale. Any measurements, floor areas (including any total floor area), openings and orientation are approximate. No details are guaranteed, they cannot be relied upon for any purpose and they do not form part of any agreement. No liability is taken for any error, omission or misstatement. A party must rely upon its own inspection(s). Powered by www.propertybox.io



To view this property please contact Connells on

T 01908 563 993
E stonystratford@connells.co.uk

82 High Street Stony Stratford
 MILTON KEYNES MK11 1AH

EPC Rating: C

Tenure: Freehold

check out more properties at connells.co.uk



1. MONEY LAUNDERING REGULATIONS Intending purchasers will be asked to produce identification documentation at a later stage and we would ask for your co-operation in order that there will be no delay in agreeing the sale. 2. These particulars do not constitute part or all of an offer or contract. 3. The measurements indicated are supplied for guidance only and as such must be considered incorrect. Potential buyers are advised to recheck measurements before committing to any expense. 4. We have not tested any apparatus, equipment, fixtures, fittings or services and it is in the buyers interest to check the working condition of any appliances.

Connells Residential is registered in England and Wales under company number 1489613, Registered Office is Cumbria House, 16-20 Hockliffe Street, Leighton Buzzard, Bedfordshire, LU7 1GN. VAT Registration Number is 500 2481 05.

See all our properties at www.connells.co.uk | www.rightmove.co.uk | www.zoopla.co.uk

Property Ref: SSD307702 - 0002