

4 Wardle Drive

Northwich

MUST SEE PROPERTY - Truly Enchanting Four Bedroom Detached Home, with the most Unique Design Throughout.

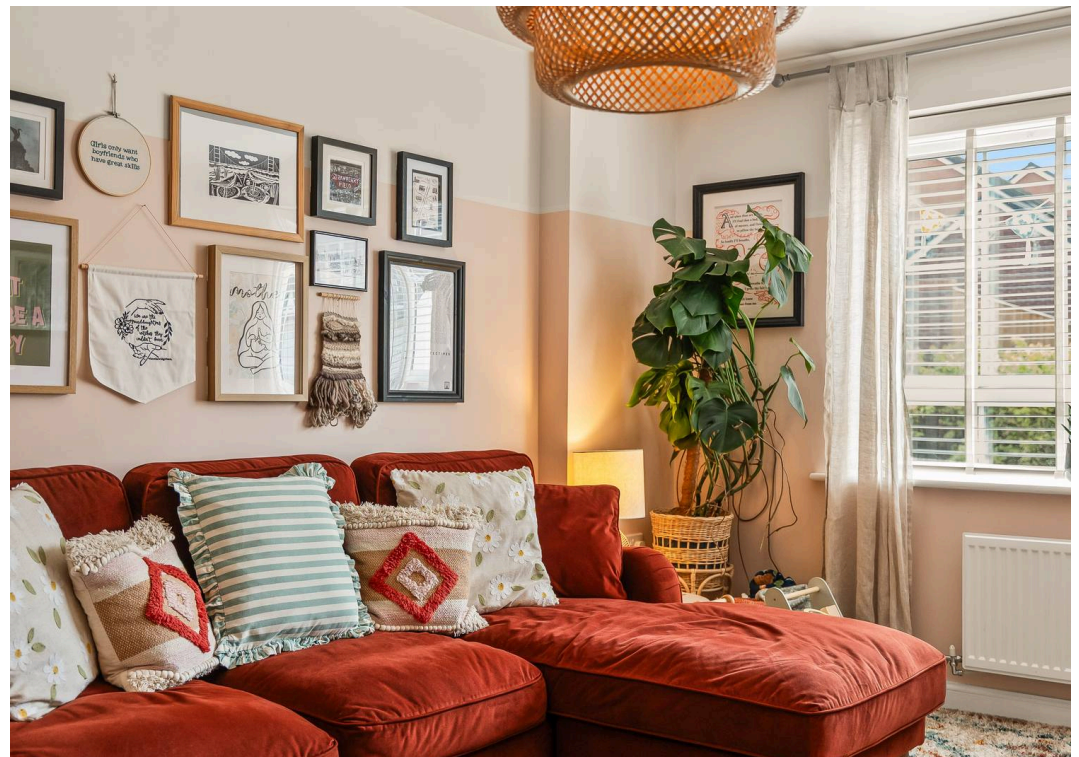
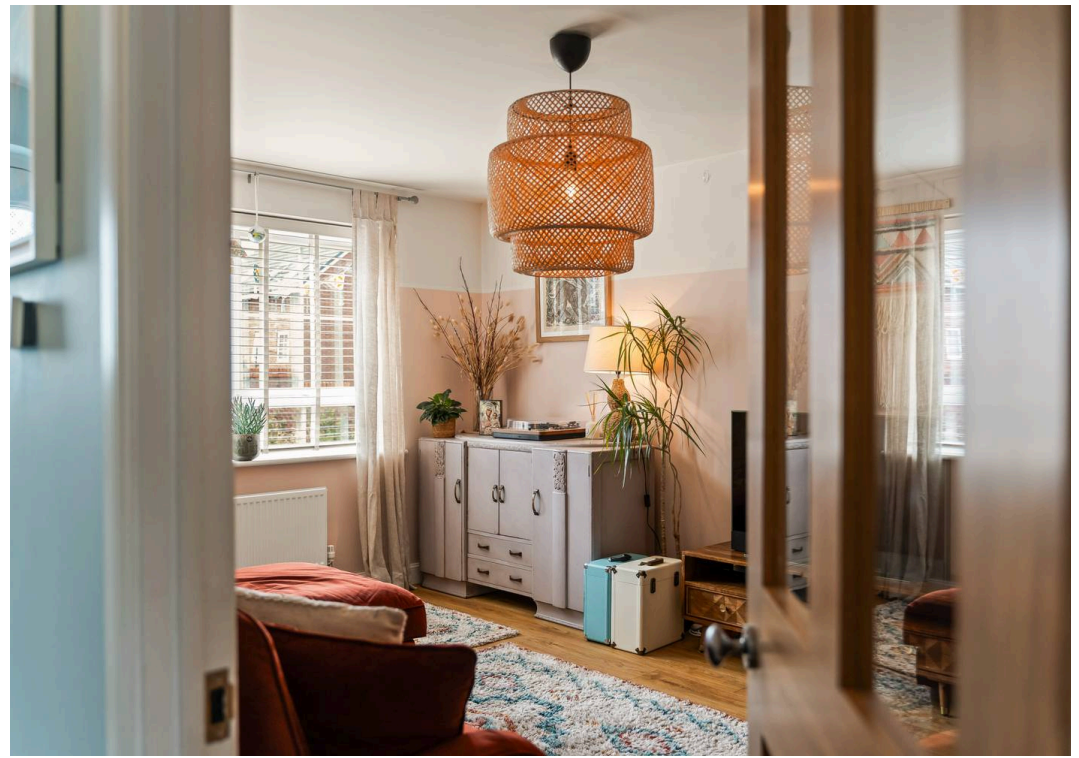
Council Tax band: D

Tenure: Freehold

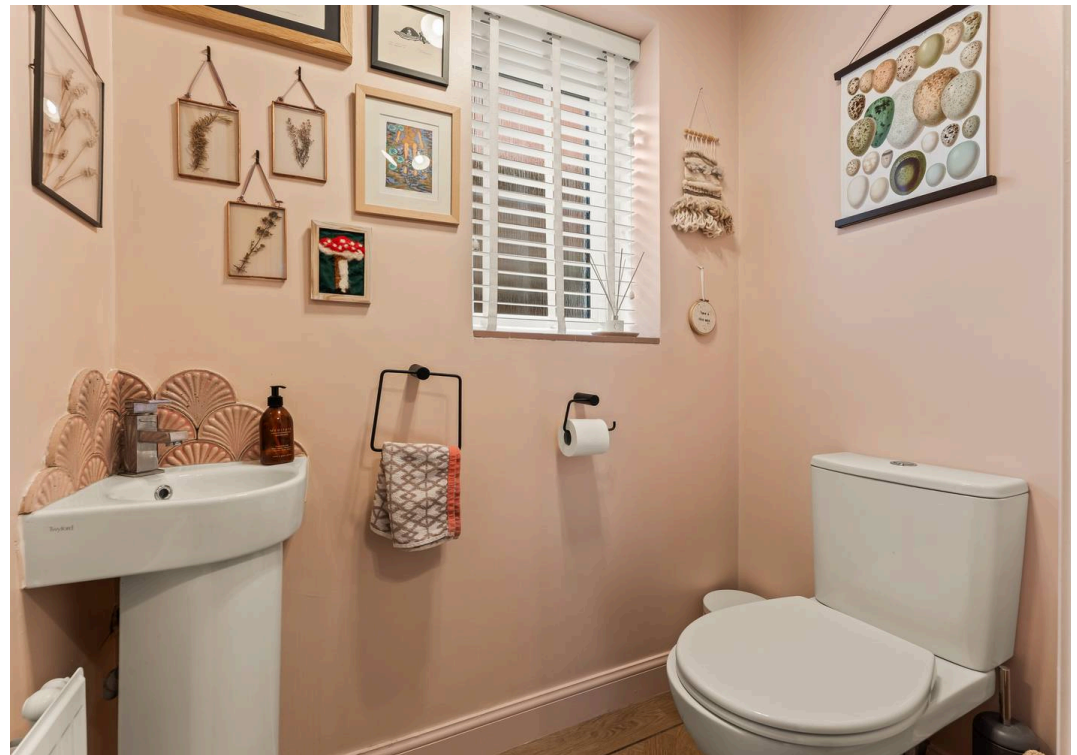
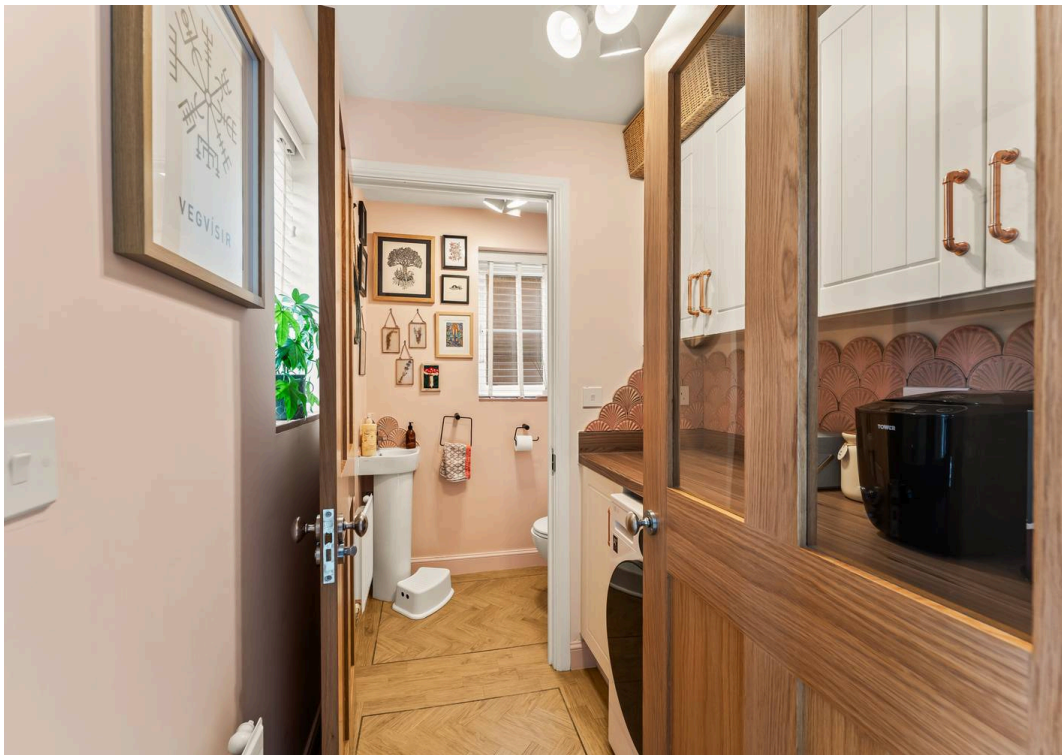
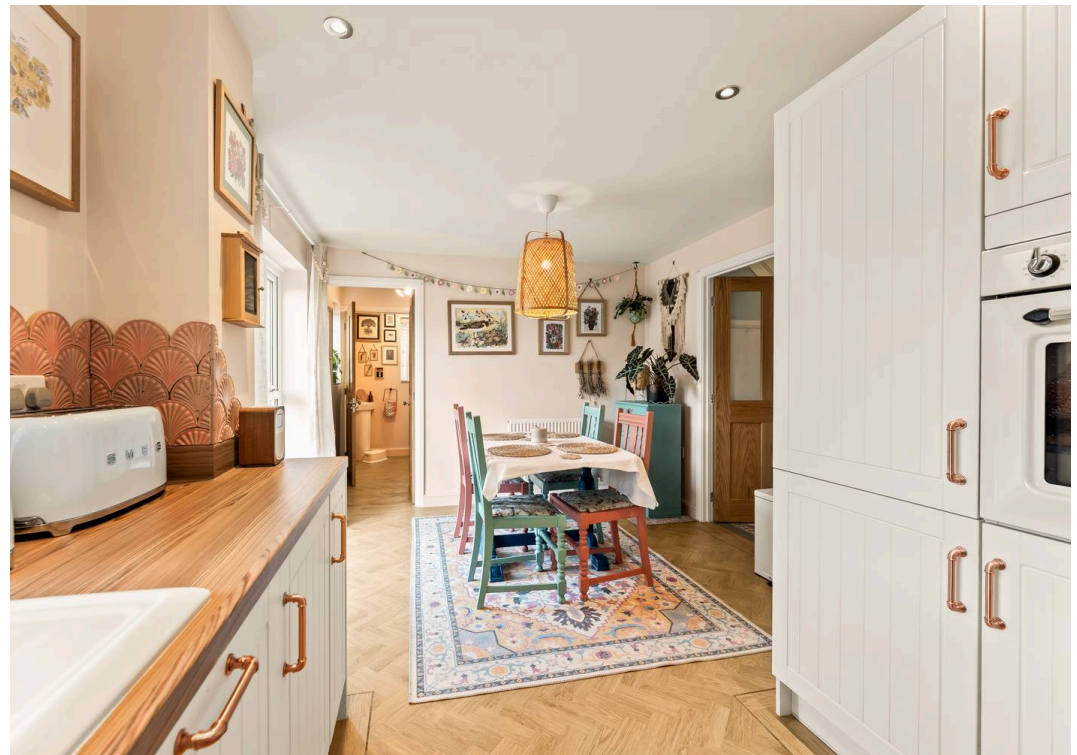
EPC Energy Efficiency Rating: B

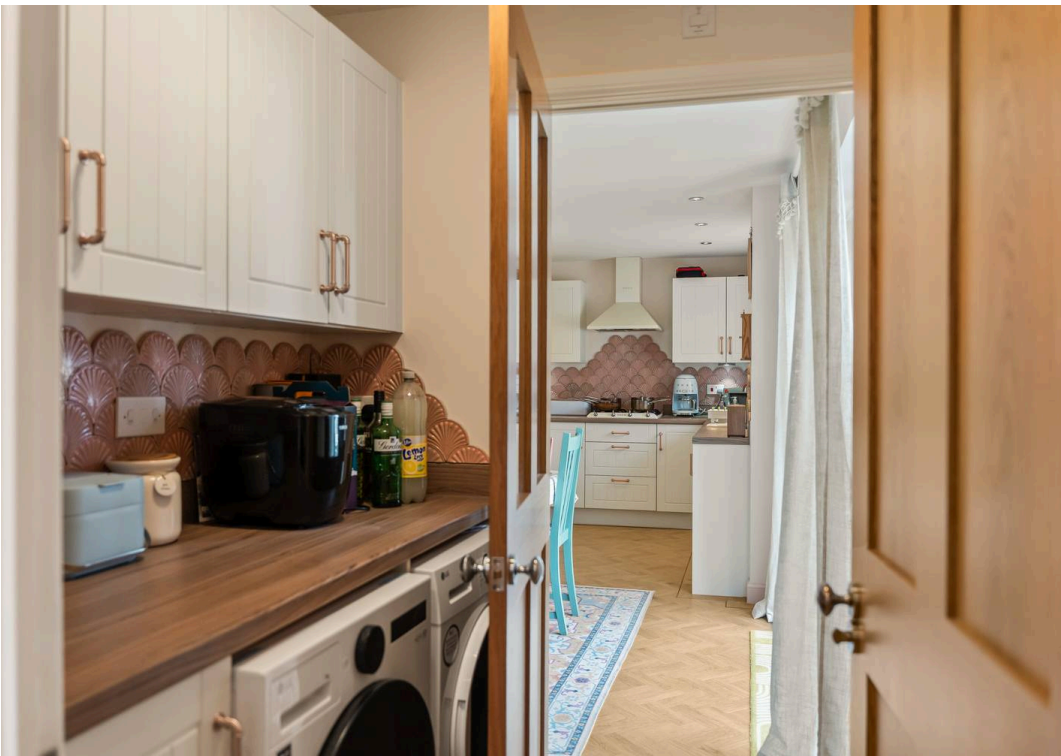
EPC Environmental Impact Rating: B

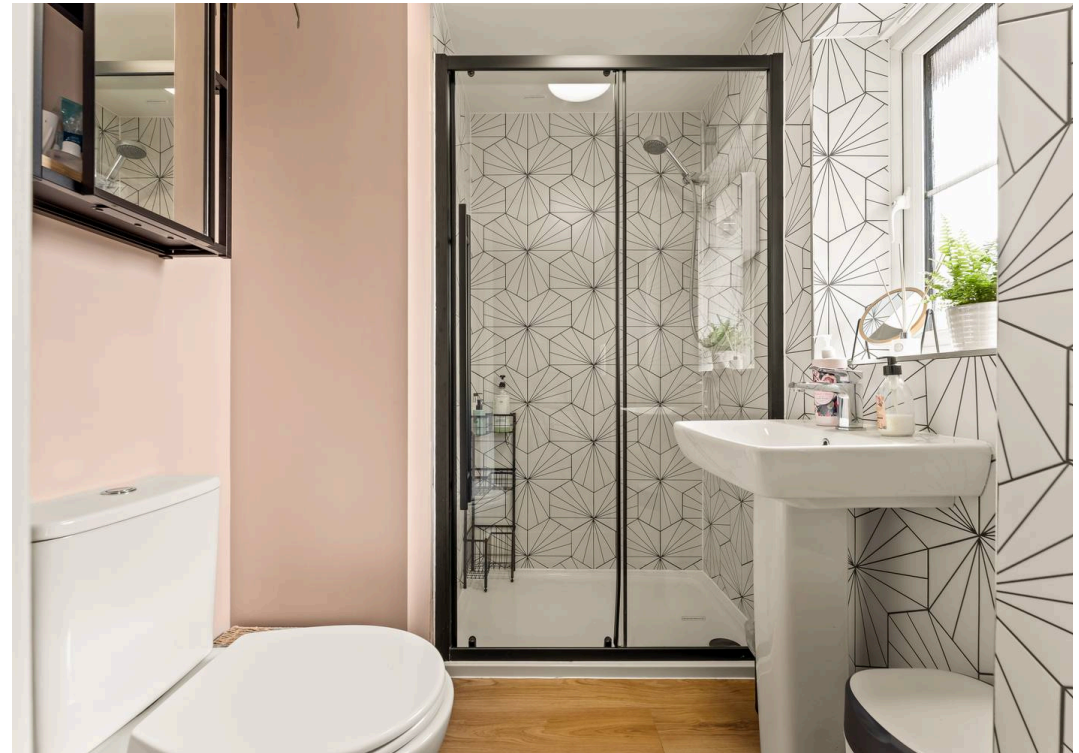
- A Simply Fabulous Detached Family Home
- Four Bedrooms
- The Most Unique Design Throughout
- Driveway
- Easily Maintainable Rear Garden
- Utility Space
- Downstairs WC
- Great Walks Nearby
- Fantastic Commuting Options
- Check out Alex's Video Tour!

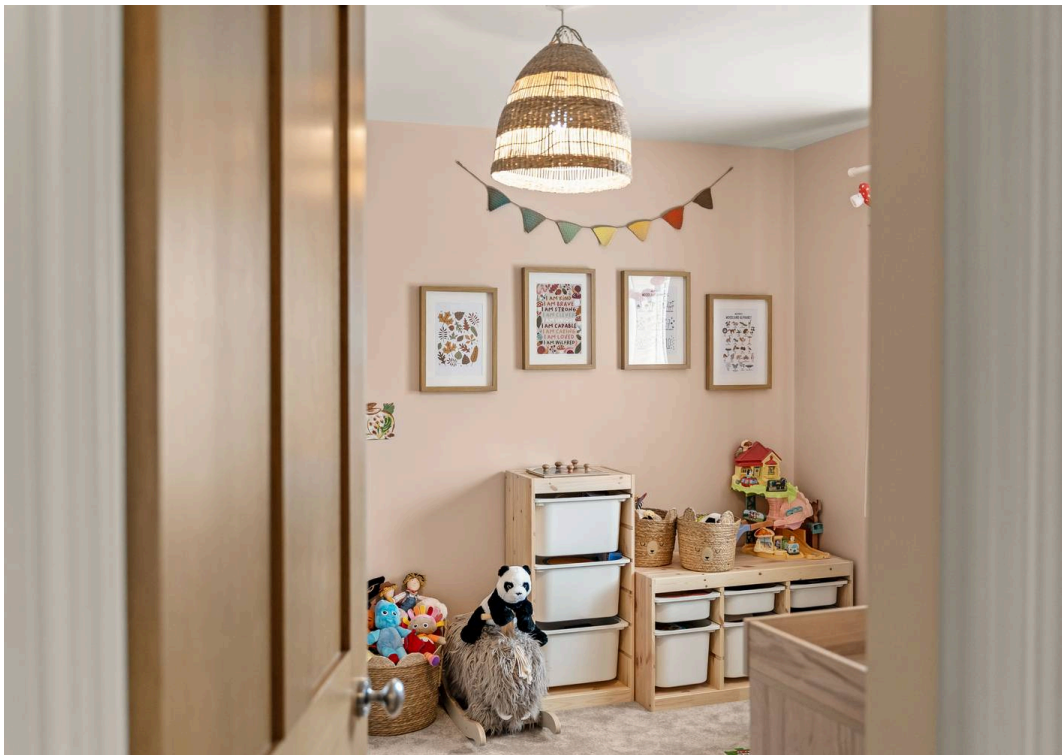






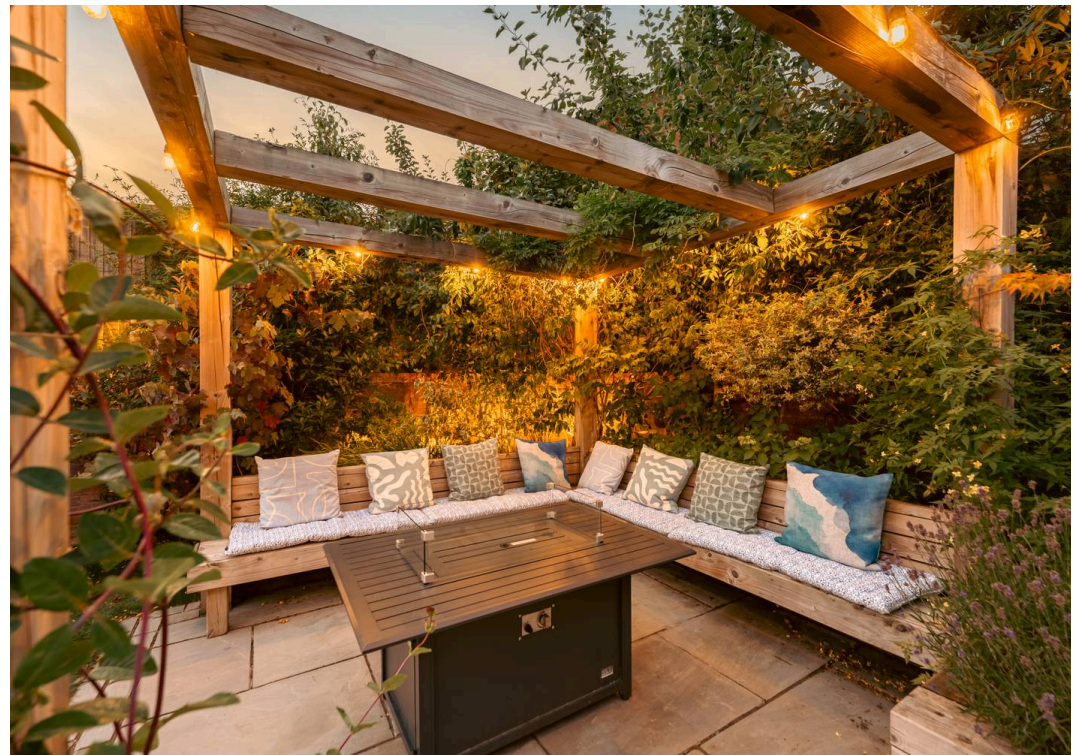












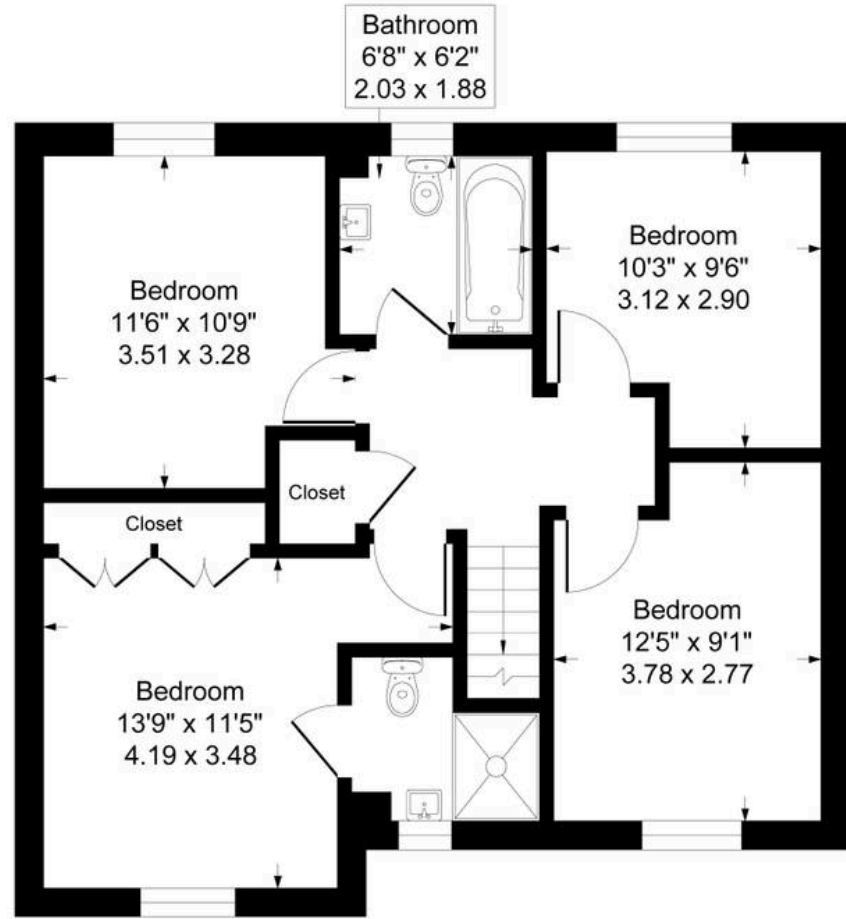


Wardle Drive, Northwich

Approximate Gross Internal Floor Area = 112.1 sq m / 1207 sq ft



Ground Floor



First Floor

Illustration for identification purposes only, measurements are approximate, not to scale.

Vincent James Estate Agents

87 Witton Street, Northwich - CW9 5DR

01606663939 • hello@vincentjamesestateagents.co.uk • www.vincentjamesestateagents.co.uk/