



## 19 SCHOOL ROAD WORKSOP, S81 9PX

£180,000  
FREEHOLD

This deceptively spacious and beautifully extended three-bedroom semi-detached family home is presented in a stylish and contemporary manner throughout. Offering generous and versatile living accommodation, the property features a welcoming entrance porch and hallway, a luxurious ground floor shower room, and an impressive open-plan kitchen diner that forms the heart of the home—perfect for modern family living and entertaining. This flows effortlessly into a bright and airy sitting room and a well-appointed living room, both enjoying views over the attractive rear garden.

To the first floor are three well-proportioned bedrooms and a modern family bathroom, all finished to a high standard. Externally, the property benefits from a block-paved driveway providing ample off-road parking, and a stunning, larger-than-average rear garden with patio seating areas and access to a nearby wooded area—ideal for outdoor enjoyment.

Situated in a much sought-after village location, the property is conveniently positioned close to local shops, schools and amenities, as well as Langold Lake, and offers excellent access to Worksop, Doncaster, Bawtry, Sheffield and Rotherham.

Kendra  
Jacob

Powered by  
JBS Estates

# 19 SCHOOL ROAD

- Deceptively spacious extended three-bedroom semi-detached family home
- Stylish and contemporary décor throughout
- Generous and versatile living accommodation
- Impressive open-plan kitchen diner ideal for entertaining
- Bright and airy sitting room with garden views
- Well-presented living room with feature fireplace
- Luxurious ground floor shower room and modern family bathroom
- Three well-proportioned bedrooms
- Large, beautifully maintained rear garden with patio area
- Sought-after village location close to local amenities, Langold Lake, and excellent transport links to Worksop, Doncaster, Bawtry, Sheffield and Rotherham



## ENTRANCE PORCH

A welcoming entrance porch featuring a side-facing composite door and a front-facing uPVC double-glazed window, allowing for plenty of natural light. Finished with stylish laminate wood flooring, the space also benefits from double doors opening into a generously sized cloak cupboard housing the wall-mounted combination boiler, and an internal door leading seamlessly into the main hallway.

## ENTRANCE HALLWAY

An inviting and well-proportioned hallway with a staircase rising to the first floor. Elegant coving enhances the ceiling, while a central heating radiator ensures comfort. Doors lead to the downstairs shower room and the impressive open-plan kitchen diner.

## DOWNSTAIRS SHOWER ROOM

A beautifully appointed, contemporary shower room featuring a spacious walk-in enclosure with a luxurious rainfall shower. Complemented by a sleek vanity wash basin and low-level WC, the room is finished with high-quality wall tiling, laminate flooring, inset ceiling lighting, extractor fan, radiator, and a front-facing obscure uPVC double-glazed window.

## OPEN PLAN KITCHEN DINER

This stunning extended open-plan space forms the heart of the home, ideal for modern living and entertaining. The kitchen is fitted with a stylish range of wall and base units, complemented by quality work surfaces incorporating a stainless steel sink with mixer tap. There is ample space for freestanding appliances, partial wall tiling,

contemporary downlighting, and a side-facing uPVC double-glazed window. A tiled floor flows effortlessly through the space and into the dining area.

The dining area is bright and spacious, benefitting from rear-facing uPVC double-glazed windows and elegant French doors that open onto the garden, creating a wonderful indoor-outdoor feel. Finished with coving and a radiator, this area also provides access to a useful utility/storage room and

## SITTING ROOM

An impressive extended sitting room, beautifully light and airy, with rear-facing uPVC double-glazed windows and French doors overlooking the garden. Decorative coving and a radiator add comfort and style, while double doors create a natural flow into the living room.

## LIVING ROOM

A well-presented and generously sized living room, featuring a front-facing uPVC double-glazed window. The space is enhanced by decorative coving and two radiators. A charming focal point is provided by the feature fireplace with marble hearth and inset, housing a gas fire, adding warmth and character.

## FIRST FLOOR LANDING

A bright landing area with a rear-facing uPVC double-glazed window, coving to the ceiling and loft access. Doors lead to three well-proportioned bedrooms and the family bathroom.

### MASTER BEDROOM

A stylish and attractive principal bedroom featuring a front-facing uPVC double-glazed window, coving to the ceiling and a radiator, offering a calm and comfortable retreat.

### BEDROOM TWO

A spacious double bedroom with a front-facing uPVC double-glazed window, coving, dado rail detailing, radiator and laminate wood flooring, creating a clean and contemporary feel.

### BEDROOM THREE

A well-sized third bedroom with a rear-facing uPVC double-glazed window, coving and radiator. The room benefits from fitted wardrobes with matching overhead storage, maximising both space and practicality.

### FAMILY BATHROOM

A modern and well-finished three-piece suite comprising a panelled bath with shower mixer tap and glass screen, pedestal wash basin and low-level WC. Fully tiled walls and flooring create a sleek look, complemented by downlighting, a radiator and a rear-facing obscure uPVC double-glazed window.

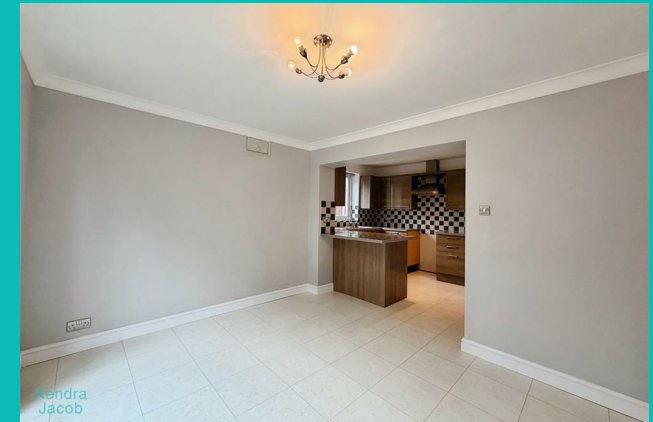
### EXTERIOR

To the front, the property boasts an attractive block-paved driveway with wrought iron gates, providing ample off-road parking.

To the rear is a truly impressive and generously sized garden, beautifully maintained and predominantly laid to lawn with mature shrubs and trees. A paved patio seating

area offers the perfect space for outdoor entertaining, while a rear gate provides direct access to a nearby wooded area—ideal for dog walking. The garden also includes a substantial shed for additional storage.

## 19 SCHOOL ROAD





Kendra  
Jacob



# 19 SCHOOL ROAD

## ADDITIONAL INFORMATION

**Local Authority** – Bassetlaw

**Council Tax** – Band A

**Viewings** – By Appointment Only

**Floor Area** – 1071.10 sq ft

**Tenure** – Freehold



Kendra Jacob



Kendra Jacob



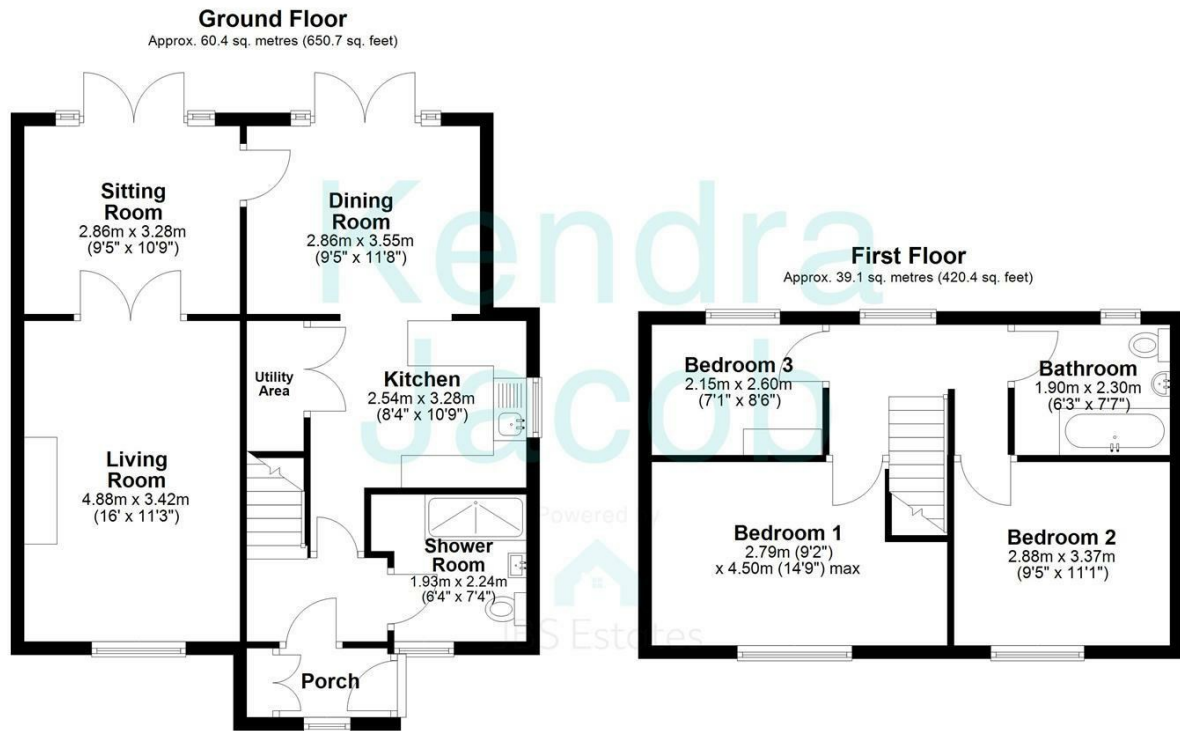
Kendra Jacob



Kendra Jacob



Kendra Jacob



Total area: approx. 99.5 sq. metres (1071.1 sq. feet)

The floorplans provided are for illustrative purposes only and may not represent the exact scale, dimensions, or specifications of the property. Measurements are approximate and should not be relied upon for any legal or financial decisions. It is the responsibility of the buyer, tenant, or their representatives to verify the accuracy of the details provided herein. For exact measurements, professional advice, or any other clarifications, please consult a licensed surveyor or property expert.

Plan produced using PlanUp.



Energy Efficiency Rating		Current	Potential
Very energy efficient - lower running costs			
(92 plus) <b>A</b>			
(81-91) <b>B</b>			
(69-80) <b>C</b>			
(55-68) <b>D</b>			
(39-54) <b>E</b>			
(21-38) <b>F</b>			
(1-20) <b>G</b>			
Not energy efficient - higher running costs			
<b>England &amp; Wales</b>		EU Directive	
		2002/91/EC	

Agents Note: Whilst every care has been taken to prepare these particulars, they are for guidance purposes only. All measurements are approximate and are for general guidance purposes only and whilst every care has been taken to ensure their accuracy, they should not be relied upon and potential buyers/tenants are advised to recheck the measurements

Kendra Jacob Estate Agents  
Six Oaks Grove  
Retford  
DN220RJ

01909 492 116  
Kendrajacob@jbs-estates.com

Kendra  
Jacob

Powered by  
 JBS Estates