



## Sussex Mews West, W2

£1,961 Per week

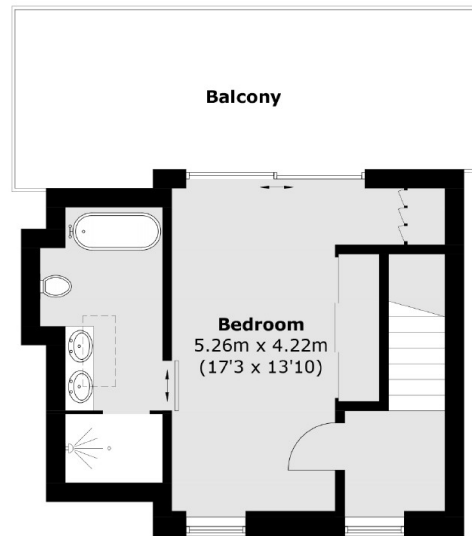
An architect designed three bedroom house in a picturesque and cobbled mews moments from Hyde Park. The property has a spacious open plan kitchen/ reception with room to dine, three en suite bathrooms, private decked roof terrace and a separate laundry room.

Sussex Mews is on the doorstep of Paddington and Lancaster Gate, within easy access of Notting Hill and the West End and close to the shops and Boutiques of Connaught Village.

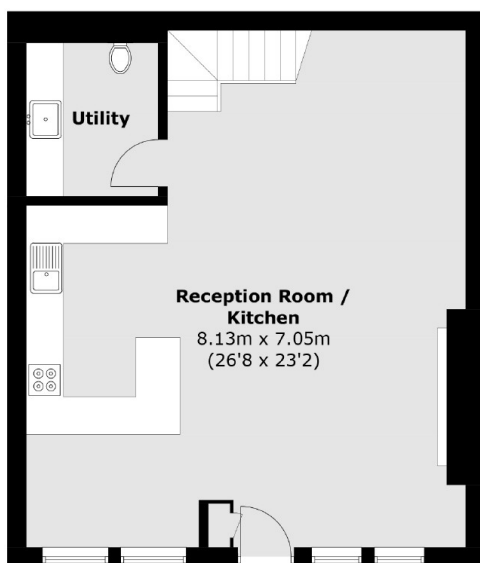
### Features

- Newly Refurbished
- Mews House
- Open Plan Living
- Three Double Bedroom
- En Suite Bathrooms
- Decked Terrace

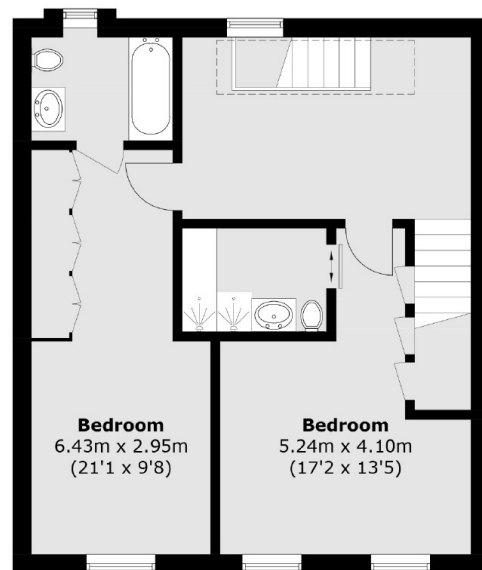
# Sussex Mews West, London, W2



**Second Floor**



**Ground Floor**



**First Floor**

Total area (approx.): 146.9 sq. m (1,581.1 sq. ft)  
Balcony : 19.4 sq. m (208.8 sq. ft)