



## PALACE COURT, W2

£1,350,000

Moments Away From Hyde Park  
Newly Developed Penthouse  
South Facing Terrace  
Great Transport Links  
Portered Building  
Chain Free

@marshandparsons  
marshandparsons.co.uk

MARSH &  
PARSONS



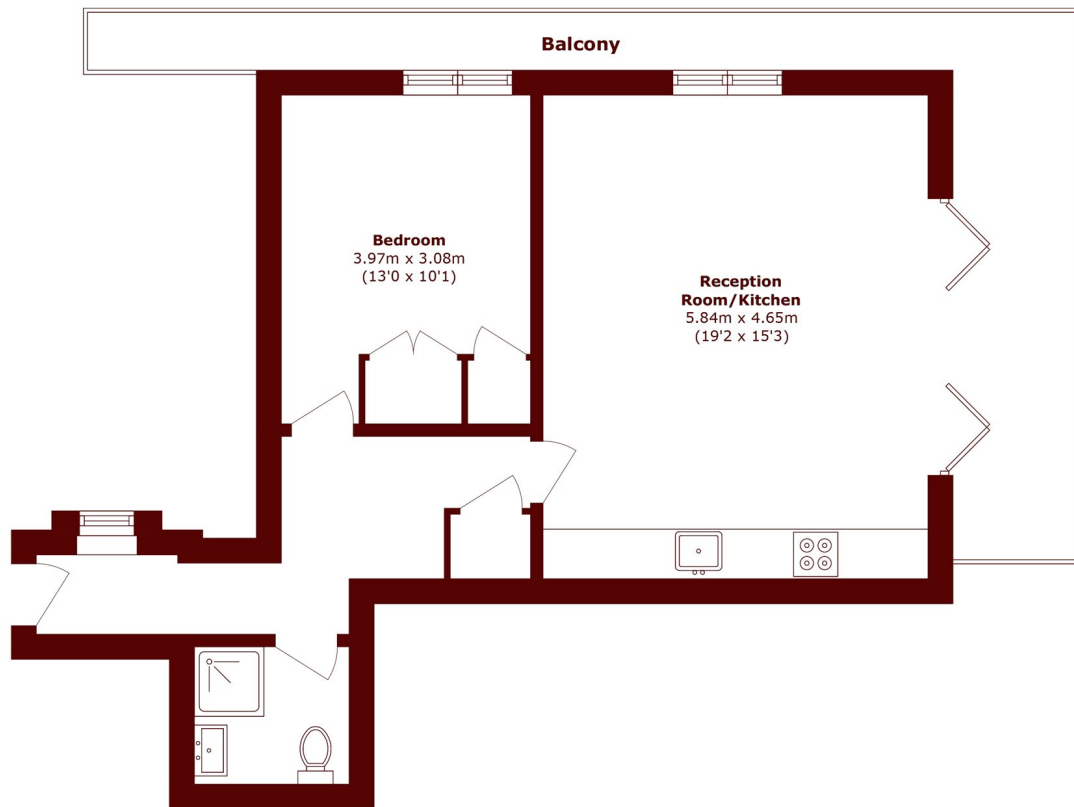
# ABOUT THE PROPERTY

Positioned within a sought-after red brick, portered building, this newly developed penthouse offers exceptional lateral living space. The accommodation comprises an expansive reception/dining room, alongside a sleek open-plan kitchen fitted with top-of-the-range Miele appliances. The property further benefits from a generous bedroom and a well-appointed separate bathroom.

A standout feature is the rare wraparound private terrace, affording far-reaching views across Kensington Gardens and Hyde Park, as well as iconic London landmarks including The Shard and the London Eye.



# STEP INSIDE PALACE COURT



Total area (approx.): 52.4 sq. m (564.0 sq. ft)  
Balcony area (approx.): 17.3 sq. m (186.2 sq. ft)

**Notting Hill**  
020 7313 2890

Energy Rating: C We aim to make our particulars both accurate and reliable. However, they are not guaranteed; nor do they form part of an offer or contract. If you require clarification on any points then please contact us, especially if you're traveling some distance to view. Please note that appliances and heating systems have not been tested and therefore no warranties can be given as to their good working order

**MARSH &  
PARSONS**