



Molesworth Street, SE13

£1,500 Per calendar month

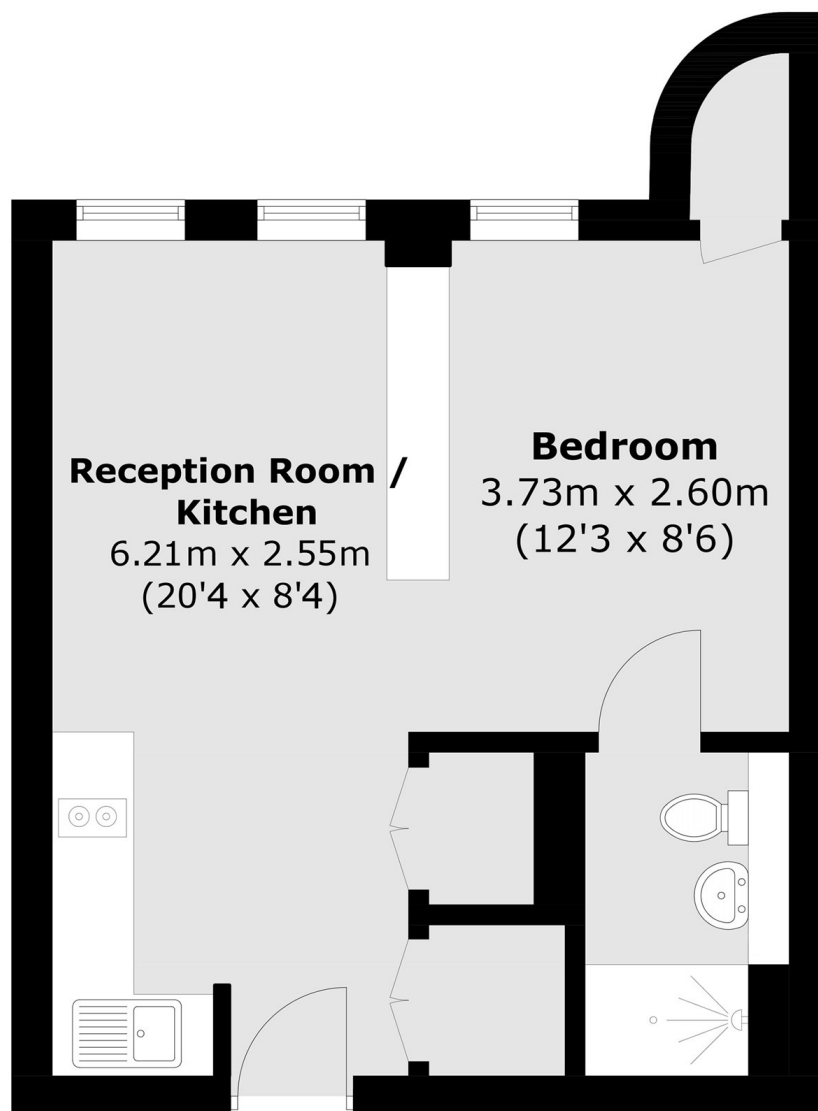
A beautifully presented studio flat offering high-spec modern fixtures and fittings throughout. The property offers stylish wooden flooring, efficient central heating, and double glazing, providing comfort and energy efficiency. Residents also benefit from a concierge and access to three roof terraces.

Part of the new Riverdale House development, this fantastic, ground floor studio flat is located a short walk from Lewisham mainline and DLR station so perfect for anyone working in the City or Canary Wharf.

Features

- Studio Flat
- High Specification
- Smart Kitchen
- Wooden Flooring
- Private Development
- Close To Lewisham Station

Molesworth Street,
London, SE13



Total area (approx.): 34.4 sq. m (370.3 sq. ft)