



The Hollows | | Newport | PO30 5AJ

Offers Around **£155,000**



The Hollows |
Newport | PO30 5AJ
Offers Around £155,000

This modern maisonette, located in The Hollows, Newport, offers a comfortable living space of 657 sq ft. With two well-proportioned bedrooms and a stylish bathroom, it is ideal for small families or professionals seeking a convenient home. The property features a spacious reception room, perfect for relaxation or entertaining guests. Built in 1980, it combines contemporary design with practicality. Additionally, there is parking available for one vehicle, enhancing the convenience of this delightful residence. A perfect blend of comfort and accessibility awaits you.

- 2 GOOD SIZED BEDROOMS
- MODERN BATHROOM
- SPACIOUS RECEPTION ROOM
- DOUBLE GLAZING THROUGHOUT
- COMMUNAL GARDEN AT THE REAR
- MODERN MAISONETTE

Entry Stairs
20'4" x 32'10" (6.19 x .99)

Hallway
5'1" x 12'4" (1.56 x 3.76)

Living Room
14'6" x 12'4" (4.41 x 3.75)

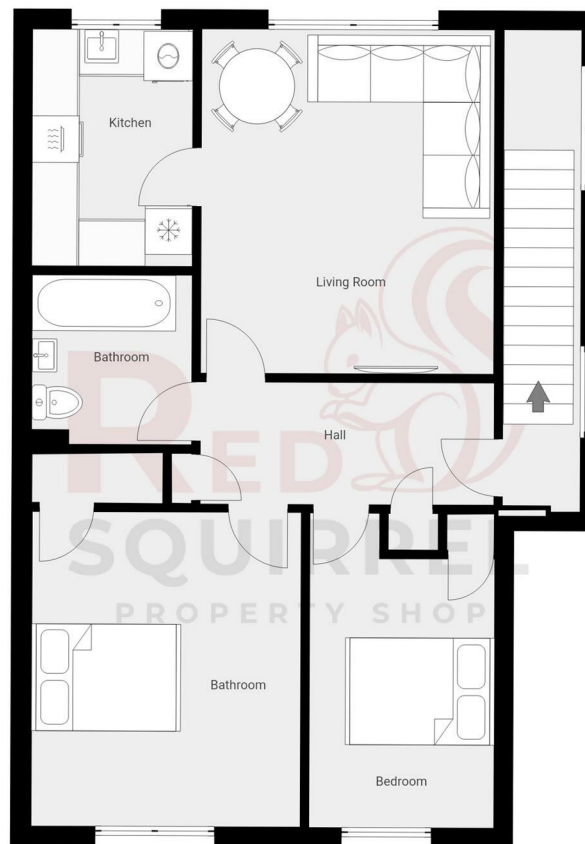
Kitchen
9'11" x 6'9" (3.03 x 2.05)

Bedroom One
13'2" x 11'3" (4.02 x 3.44)

Bedroom Two
13'2" x 7'9" (4.02 x 2.36)

Bathroom
7'1" x 6'8" (2.16 x 2.04)

Rear Garden



Energy Efficiency Rating		Current	Potential
Very energy efficient - lower running costs			
(92 plus) A			
(81-91) B			
(69-80) C			
(55-68) D		67	77
(39-54) E			
(21-38) F			
(1-20) G			
Not energy efficient - higher running costs			
England & Wales		EU Directive 2002/91/EC	

Council Tax Band **B**
EPC Rating **D**

3 Langely Court Pyle Street
Newport
Isle of Wight
PO30 1LA
01983 521212

enquiries@redsquirrelpropertyshop.co.uk
www.redsquirrelpropertyshop.co.uk

THIS FLOOR PLAN IS PROVIDED WITHOUT WARRANTY OF ANY KIND. SENSOPHA DISCLAIMS ANY WARRANTY INCLUDING, WITHOUT LIMITATION, SATISFACTORY QUALITY OR ACCURACY OF DIMENSIONS.