



## Great Suffolk Street, SE1

### £600,000

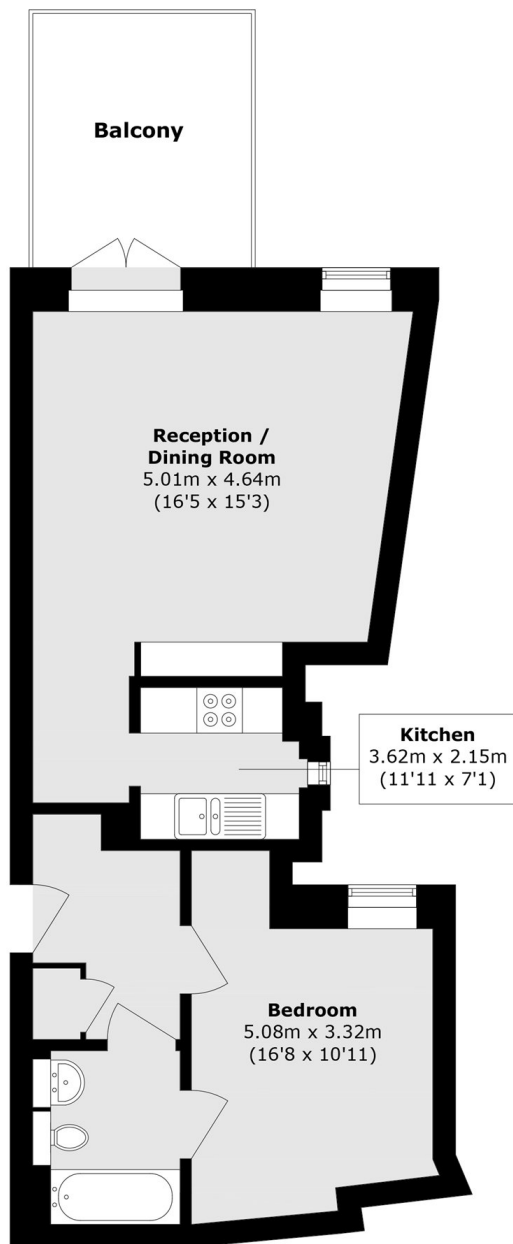
A beautifully presented fifth-floor apartment featuring a bright and spacious living room alongside a separate kitchen with a modern finish, complete with granite worktops and integrated appliances. Finished to a great standard throughout, the property also benefits from a generous double bedroom with extensive built-in storage, a contemporary Jack and Jill en-suite bathroom, and a fantastic private balcony.

Set at the top of Great Suffolk Street, this superbly located apartment is moments from the River Thames, the South Bank, Lower Marsh and The Cut, placing the best of central London within easy reach. There are excellent transport connections, with Southwark, Blackfriars, London Bridge and Waterloo stations all nearby.

### Features

- Large One Bedroom Apartment
- Private Balcony
- Almost 600 Square Feet
- Separate Modern Kitchen
- Ample Storage
- Low Service Charges

# Great Suffolk Street, London, SE1



Total area (approx.): 54.7 sq. m (588.7 sq. ft)  
Balcony area (approx.): 9.6 sq. m (103.3 sq. ft)