



## 1 Nine Elms Lane

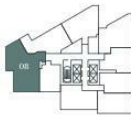
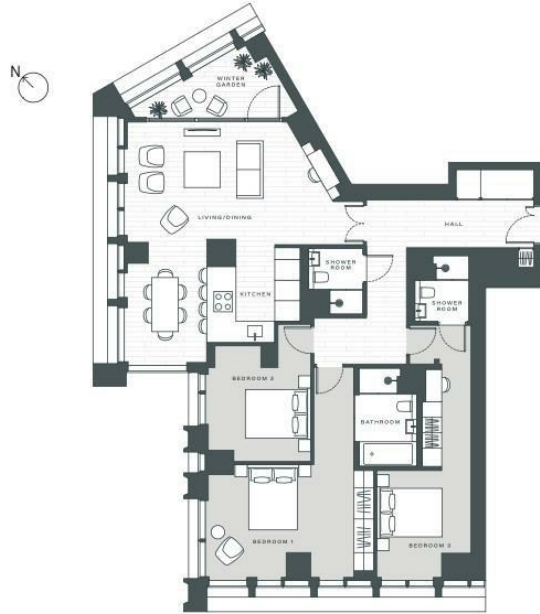
, London SW8 5HD

- Near Vauxhall & Nine Elms Station
  - 50th-Floor Sky Lounge
    - Gym
  - Winter Garden
  - EPC-B
- 24-Hour Concierge
- Residents' Lounge
- Meeting Rooms
- Cinema Room
  - CTB-G

**£11,500 Per Month**



Local Authority **Wandsworth**  
 Council Tax Band **G**  
 EPC Rating **B**



TOTAL AREA	H10 SQ M	3,588 SQ FT
Living/Dining/Kitchen	7.81m x 5.3m	24'6" x 17'5"
Winter Garden	4.33m x 1.75m	14'2" x 5'9"
Bedroom 1	6.54m x 5.18m	21'7" x 16'12"
Bedroom 2	7.88m x 3.81m	25'10" x 9'7"
Bedroom 3	3.58m x 3.26m	11'9" x 10'8"

\*On floors 28-30, the plot number will be 7.



**London Office Office**  
 Spaces Victoria, 25 Wilton Road, Pimlico,  
 London, SW1V 1LW

**Contact**  
 020 3084 3094  
[XL@londonvictoriagroups.co.uk](mailto:XL@londonvictoriagroups.co.uk)  
[www.londonvictoriagroups.co.uk](http://www.londonvictoriagroups.co.uk)

Agents Note: Whilst every care has been taken to prepare these particulars, they are for guidance purposes only. All measurements are approximate and for general guidance purposes only and whilst every care has been taken to ensure accuracy, they should not be relied upon and potential buyers/tenants are advised to recheck the measurements.

LONDON  
 VICTORIA  
 GROUPS