



**12, Millmead, Sutton Road, Shrewsbury, SY2 6DR**  
£550 Per Month



12, Millmead, Sutton Road, Shrewsbury, SY2 6DR

**£550 Per Month**

VIRTUAL TOUR AVAILABLE: Attractive ground floor studio flat in a sought after residential area close to road links and amenities. Includes allocated parking space.

Available: 07/05/26

## Description

Comprising: Communal entrance, lobby including large store cupboard, shower room, living area including store cupboard, kitchen including oven, hob and fridge. Communal laundry room. Double glazing, gas central heating, professionally maintained communal garden. Allocated parking space. EPC C

Unfurnished

Council Tax Band: A

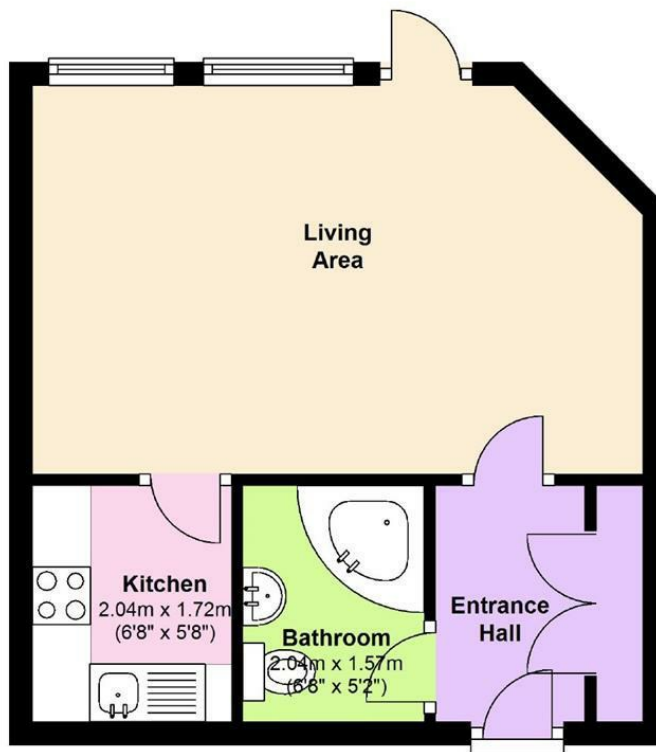
Available: 7th May 2026

EPC: C

## Floor Plans

### Ground Floor

Approx. 28.4 sq. metres (305.6 sq. feet)



Total area: approx. 28.4 sq. metres (305.6 sq. feet)

We accept no responsibility for any mistake or inaccuracy contained within the floorplan. The floorplan is provided as a guide only and should be taken as an illustration only. The measurements, contents and positioning are approximations only and provided as a guidance tool and not an exact replication of the property.

Plan produced using PlanUp.

These particulars, whilst believed to be accurate are set out as a general outline only for guidance and do not constitute any part of an offer or contract. Intending purchasers should not rely on them as statements of representation of fact, but must satisfy themselves by inspection or otherwise as to their accuracy. No person in this firm's employment has the authority to make or give any representation or warranty in respect of the property.