



Sloane Avenue, SW3

£460,000

A spacious one bedroom apartment that has been finished to a high standard. This property would work excellently as a rental investment or London base.

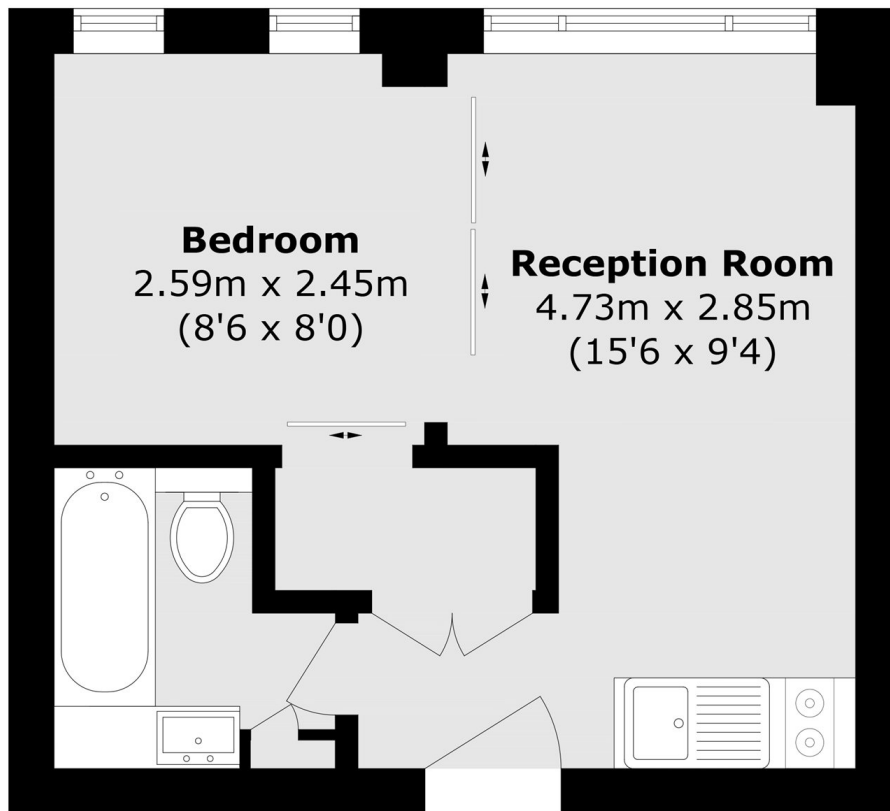
Nell Gwynn House is a popular, portered block located on Sloane Avenue which is in close proximity to Sloane Square, South Kensington and the King's Road.

Features

- 24 Hour Porter
- Recently Refurbished
- One Bedroom
- Lift
- One Bathroom
- Ideal Rental Investment

Sloane Avenue, London, SW3

Third Floor



Total area (approx.): 25.0 sq. m (269.1 sq. ft)