

**JOHN
GOODWIN**

THE PROPERTY PROFESSIONALS

EST. 1981

CREWS COURT

SUCKLEY, WORCESTER, WORCESTERSHIRE



CREWS COURT

SUCKLEY, WORCESTER, WORCESTERSHIRE, WR6 5DW

OCCUPYING A DELIGHTFUL POSITION IN THE NORTHERN REACHES OF THE MALVERN HILLS NATIONAL LANDSCAPE ON THE OUTSKIRTS OF THE VILLAGE OF SUCKLEY, THIS 16TH CENTURY HALF-TIMBERED COUNTRY HOME OFFERS MOST GENEROUS ACCOMMODATION WITH THREE RECEPTION ROOMS, OAK FRAMED GARDEN ROOM, BREAKFAST KITCHEN, TWO BATHROOMS, AND A LARGE CELLAR.

The (similar age) barn conversion alongside offers a large dining kitchen, wet room, sitting room, bedroom and 3 further large attic rooms. There is a large 3 bay garage, two tiled roof stables / outbuildings alongside.

A delightful extensive garden with far reaching views across unspoilt countryside / nature reserves has a dual solar / heat exchange heated swimming pool, over 11 acres of fields, paddocks, and woodland, with further outbuildings.

EPC: Rating E | No onward chain



3 - 5 New Street, Ledbury, Herefordshire HR8 2DX

Telephone: 01531 634648 Fax: 01531 633729

E-mail: ledbury@johngoodwin.co.uk

www.johngoodwin.co.uk

Crews Court

Dating from about 1580, Crews Court is a Grade II Listed half-timbered country house; originally known as the Blackhouse, (a name present on many old maps). The property is set on the gentle wooded slopes of the Suckley Hills, within the Malvern Hills AONB (National Landscape) and a Site of Special Scientific Interest. The land is officially part of the Malvern Hills, and the property borders two nature reserves (Crews Hill Wood and Blackhouse Wood), with two further nature reserves (Ravenshill and The Knapp) within a mile. The house looks over open countryside in every direction, with uninterrupted views through 360° and (with the privilege of its 'dark skies') has enabled extensive deep sky imaging to be enjoyed.



The main house extends to approximately 2,800 sq.ft across two floors, with four double bedrooms, two bathrooms, three reception rooms and a farmhouse kitchen. Two independent staircases and four external entrances give the layout a useful flexibility with scope to configure parts of the house as a self-contained suite. Throughout, the accommodation is rich in original character - with exposed structural oak, wooden latch doors, a bread oven alcove, and what is believed to be a concealed priest hole.

Adjacent to the main house, The Hayloft (annex) extends to 1400 sq.ft and is part of the original Elizabethan barn attached to the property. The barn was converted in 2005, incorporating both the original half-timbered structure and an adjoining Dutch barn section, to provide this self-contained one-bedroomed accommodation with its own kitchen, shower room, sitting room and three attic rooms. The three-bay open fronted garage here is plumbed and powered for a washing machine etc. All this works well for extended family, long-stay guests, or could be an independent source of income subject to the necessary consents. Here also are two lockable stables with power and light, currently used for a workshop and bike storage.

The main house cellar has plenty of useful storage/shelving with bespoke temperature stable wine storage.

In the south gardens there is a dual heated swimming pool with paved terrace. The gardens (with planting guided by the renowned landscape architect John St. Bodfan Gruffydd), are mature and well-established, with a stone-







capped pond (constructed in the 1970s with submersible pump), greenhouse, and generous lawns. To the East, beyond the formal grounds, the holding extends into 2 former orchards/wildflower meadows, with a kitchen garden, paddocks and woodland. The nearest field has a stable and a large shed for secure storage of machinery for estate management. The property extends to over 11 acres in all.

The house has been in the same family for four decades, thoughtfully maintained and improved throughout with care and without compromise. It is offered for sale with no onward chain.

Situation

Crews Court sits near the Worcestershire/Herefordshire border in a hamlet of the village of Suckley. Suckley has a church, a well-regarded primary school, Holloways (UK's best upmarket garden store with multi award-winning café), and the popular Hop Shed (multiple award-winning) Brewery and Tap Room. Longley Green, Suckley, is about 1.5 miles away, with a post office, and stores. Over Crews Hill begins the village of Alfrick with its excellent Community Shop, post office and café also 1.5 miles away. Walking routes run directly from the property into the Suckley Hills, and the woodland abuts the long-distance Worcestershire Way leading to Worcester Beacon.

For broader amenities, Great Malvern and Bromyard are six miles away; Worcester and Ledbury ten miles; and Hereford is sixteen miles. Malvern and Worcester between them offer a full range of historical buildings, independent shops, cultural and sporting facilities, mainline railway stations, and a strong spread of schools at all levels. Worcester and Hereford have extensive hospital and medical specialist services. Worcester has a University and Medical School. Junction 7 of the M5 is approximately twelve miles, giving straightforward access to the national motorway network. The new Worcester Parkway station provides direct mainline train access; the journey to the University of Birmingham in 21 minutes and Paddington in approximately 2hrs. To the West is a gateway to the Welsh Marches.









The Hayloft



The Hayloft



The Hayloft

The Property In Detail

The traditional architecture, half-timbered elevations, original and newer windows, and pitched clay tile roofs present well from every angle. The accommodation has been meticulously maintained and sympathetically improved over nearly four decades of custodianship, with original character and materials optimised throughout.

Ground Floor

Front entrance: Porch, oak-framed with leaded glass infills, part stone walls and stone floor. Outside light. Antique oak entrance door to the reception hall.

Reception Hall: 5.23m x 2.31m (17'2" x 7'7") Exposed original oak structural timbers and ceiling beams. Carpet. Two radiators. Staircase to the first floor giving access to bedrooms one and three and the family bathroom. Understairs cupboard.

Dining Room: 5.36m x 4.14m (17'7" x 13'7") Dual aspect with double-glazed window to West and secondary-glazed window to front. Exposed structural oak wall timbers and ceiling beams and an original built in corner cupboard. Working stone fireplace with efficient multi-fuel Parkray stove. Radiator. Carpet.

Drawing Room: 6.35m x 5.23m (20'10" x 17'2") The largest reception room, centred on a 9'-wide inglenook fireplace with exposed sandstone and natural stone walls, stone hearth, massive oak beam and a 'Jotul 6' 10kW wood burner. Exposed original oak wall timbers and ceiling beams. Carpet with solid hard wood parquet flooring beneath. Radiator. Built-in oak cupboards. Secondary-glazed window to front. Sliding double glazed door to the garden room.

Garden Room: 4.0m x 2.8m (13'1" x 9'4") South-facing, oak-framed garden room by David Salisbury (2015), double-glazed with 2 sets of bi-fold doors onto the garden and a third single door. Travertine stone floor with electric underfloor heating. Two 1 metre Velux rooflights. This room connects the drawing room directly to the garden and the views beyond, and in practice has become a favourite with its extensive views over the garden and beyond

Inner Hallway: from Sitting Room to kitchen. Tiled floor. Pantry. Fitted storage cupboard.



Farmhouse Kitchen: 5.05m x 4.32m (16'7" x 14'2") Accessed from the Inner Hallway, also the eastern hallway and via a 'half-heck' door to the covered rear porch which has its own glazed oak framework. The kitchen is fitted with handmade oak wall and base cupboards, with quartz worktop, and an oil-fired 4-oven Aga. The original bread oven alcove survives intact beneath a massive oak beam.

Utility Room: Fitted units, fridge-freezer, butler sink, plumbing for washing machine, extensive additional storage in mahogany cupboards.

Rear Hallway: Second staircase to bedrooms two and four, with understairs storage. Side-aspect window. Stone floor.

Cloakroom: WC and vanity unit with wash-hand basin. Exposed timbers. Secondary-glazed window to front.

Study: 4.52m x 2.77m (14'10" x 9'1") Exposed oak ceiling timbers and parquet flooring with original inside door. Secondarily glazed windows on three sides and a leaded light glazed oak external door to the front garden. Radiator. Served by own entrance door, this room could function as part of an independent suite, a home office, or simply a quiet room away from the rest of the house.

First Floor

East Landing and Oak staircase: Exposed floorboards. Secondary-glazed window to side. This landing leads to Bedrooms Two and Four, and their bathroom/toilet facilities.

The West Landing: Carpeted stairs lead to Bedrooms one and three, and their bathroom/toilet facilities. This landing has evidence that it previously contained bedroom five and could be restored as such.

Bedroom One: 5.18m x 4.14m (17'0" x 13'7") The principal bedroom. Exposed wall timbers and floorboards. Secondary-glazed front and side-aspect windows with far-reaching views over to the Bromyard Downs and Bringsty Common. Radiator.

Bedroom Three: 4.17m x 3.38m (13'8" x 11'1") Exposed timbers. Carpet. Front-aspect secondary-glazed window. Fitted cupboard (formerly a fireplace). Radiator. Doors to West landing and inner library.

Inner Library/Dressing Room: A first-floor passage connecting bedrooms two and three, originally sealed and rediscovered six decades ago. Now fitted with bookshelves

and used as a small library and workspace housing the Ubiquiti gateway and server for the fully hardwired fast fibre broadband antennae and camera systems. It is equally suited to use as a walk-in wardrobe or dressing area. From here, access is gained to the partially boarded loft, and what is suggested to be a concealed priest hole, hiding behind the kitchen wall beside the AGA.

Bedroom Two: 4.75m x 4.52m (15'7" x 14'10") Exposed timbers and floorboards. South-facing rear-aspect double-glazed window with views of the south lawns. Access to boarded loft space. Connecting doors to both the inner library and East landing.

Bedroom Four: 4.6m x 2.72m (15'1" x 8'11") Exposed timbers and oak floorboards. Front and side-aspect secondary-glazed windows. Built-in cupboard. Radiator.

Bathroom One: (West landing) Exposed timbers and oak floorboards. Electric underfloor heating. WC, vanity unit with twin wash-hand basins, travertine countertops and matching base cupboards. Bath with shower over and tiled splashback. Airing cupboard housing hot water tank with immersion heater. Radiator and heated towel rail. Two south-aspect double-glazed windows.



Bathroom Two: (*East landing*) Exposed timbers and oak floorboards. Bath, vanity unit with wash-hand basin, tiled walk-in shower with electric shower. Heated towel rail. Secondary-glazed window to front.

Separate WC: Exposed floorboards. WC. Secondary-glazed window.

The Hayloft (Annexe)

Converted from the original Elizabethan barn and adjoining Dutch barn, The Hayloft provides self-contained one-bedroomed accommodation across two floors, well suited to house family, guests or independent use.

Dining Kitchen: 7.59m x 3.35m (24'11" x 11'0") Oak stable door with leaded glass window. Exposed timbers. Travertine-tiled floor with boiler-fed underfloor heating. Handmade French oak kitchen units of antique French oak with granite countertop. Dishwasher, electric combination oven with plate warmer, dual-fuel hob, fridge. Stainless steel one-and-a-half-bowl sink. Door to shower room; oak open-plan staircase to first floor.

Shower Room: Fully tiled. WC, wash-hand basin with mixer tap on marble countertop, 'Wet Room' shower. Chrome ladder radiator. Extractor fan. Downlights. Double-glazed window.

Upstairs:

Sitting Room: 5.21m x 3.3m (17'1" x 10'10") Exposed timbers and oak flooring. Front-aspect double-glazed window. Velux window. Two storage cupboards. Hard wired fast fibre broadband. Fitted bookcases. Wall lights and pendant chandelier. Boiler fed underfloor heating.

Bedroom: 2.46m x 2.97m (8'1" x 9'9") Exposed timbers and oak flooring. Velux window. Two built-in cupboards.

Attic Rooms One, Two & Three: Three further rooms at attic level (*the largest 4.67m x 4.62m / 15'4" x 15'2"*) with exposed floorboards, Velux windows and radiators. Staircase from attic room two to the garage below. These rooms offer considerable scope for adaptation and have often been used for playroom and sleeping accommodation for visiting children.

Outside & Grounds

3 Bay Open Fronted Garage: 14.12m x 4.85m (46'4" x 15'11") Plumbing and electric available. Doors to two adjoining outbuildings / stables.

Stable One: 3.89m x 3.07m (12'9" x 10'1") Light and power. Large east window. Wired to modern standards and suit a range of workshop or domestic storage uses. Tanked.

Stable Two: 3.89m x 3.15m (12'9" x 10'4") Electric light. Two west windows. Tanked.

Cellar: (*External Access*) Stone floor, light and power. Original listed door, Built-in wine racks and extensive shelving. Formerly an ancient cider-press with gullies in stone floor. Surrounded by solid earth on 3 sides it provides cool constant temperatures which are perfect for wine storage.

Gardens, Paddock & Woodland

The property is approached by a dual aspect drive: a lower tar-and-chip, electric-gated driveway leading to the garage; and an upper cobbled and tar-and-chip drive with generous parking for the main house. The garden wraps around the house, with formal south-facing lawns to the south, established flowerbeds, mature trees and shrubs, and a stone-capped pond. The extensive lawns are mown by an auto-mower with multiple switchable seasonal circuits. The 9m 'figure of eight' swimming pool is heated by both an 18.4kW heat exchanger (2026), and Suncell solar heating panels. It is set within privacy / wind-screening, with paved sun terracing around . Two sheds (for changing and pool equipment).

To the north and east, the grounds extend into orchard, paddock and woodland. There is a stable with power and water in the fields and secure 36 x 12ft storage for small agricultural machinery. A kitchen garden and greenhouse complete the outdoor offering.

The landscaped front / north garden offers lawns at various levels with natural stone walling, mature shrubs and ornamental trees, bounded by stone walling, copper beech hedge, and with a splayed vehicular approach through a pair of gates.





The property occupies over 11 acres in all, with additional land and woodland having been acquired over the years by the current owners to extend the original holding. Two of the orchards are wildflower meadows which have been extensively documented by Worcestershire Recorders.

The woodland is partly ancient woodland with newer coniferous trees. It contains a quarry which is the setting for a 50-metre zip line with oak supported upper launch platform.

This setting is a delight for all ages - from the peace and beauty of looking south over sheep grazing and the hills, scope for equestrian and small holding interests in the fields, and the adventure and discovery with the zip line and fossil finding in the woodland.

General Remarks & Stipulations

Services

We have been advised that mains water and electric are connected to the property. Oil fired central heating and drainage is via a private system. This information has not been checked with the respective service providers and interested parties may wish to make their own enquiries with the relevant authorities. No statement relating to services

or appliances should be taken to infer that such items are in satisfactory working order and intending purchasers are advised to satisfy themselves where necessary.

Council Tax

Band "G" - This information may have been obtained from the local council website only and applicants are advised to consider obtaining written confirmation.

EPC

The EPC rating for this property is E (51).

Tenure

Freehold - We are advised (subject to legal verification) that the property is freehold.

General

Intending purchasers will be required to produce identification documentation and proof of funding in order to comply with The Money Laundering, Terrorist Financing and Transfer of Funds Regulations 2017. More information can be made available upon request. John Goodwin FRICS has made every effort to ensure that measurements and particulars are accurate however prospective purchasers/tenants must satisfy themselves by inspection or

otherwise as to the accuracy of the information provided. No information with regard to planning use, structural integrity, tenure, availability/operation, business rates, services or appliances has been formerly verified and therefore prospective purchasers/tenants are requested to seek validation of all such matters prior to submitting a formal or informal intention to purchase/lease the property or enter into any contract.

Viewing

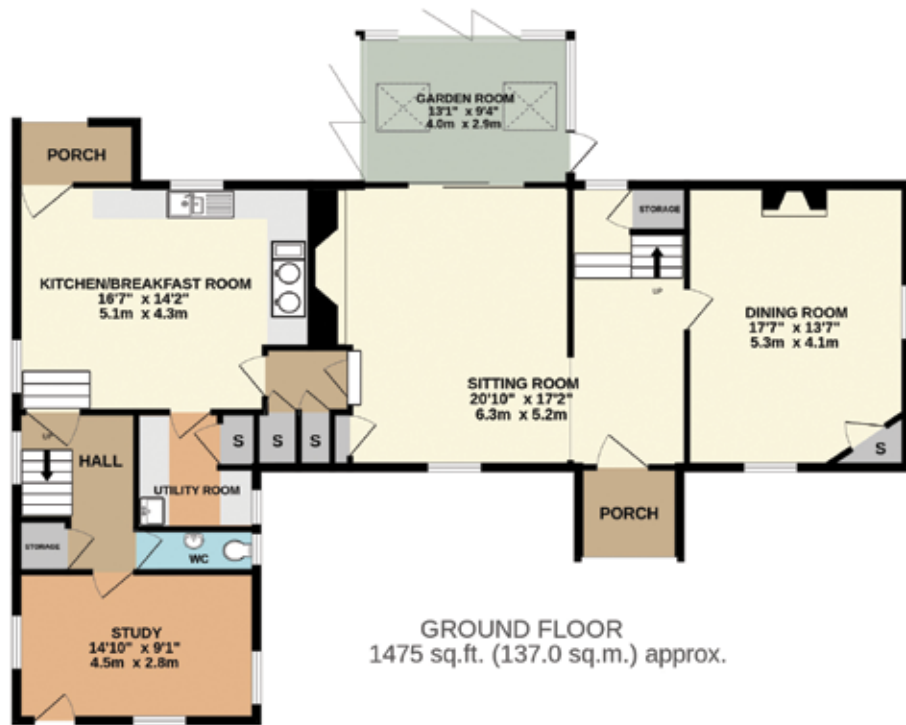
By appointment to be made through the Agent's Ledbury Office (Tel: 01531 634648) or Colwall Office (01684 540300)

what3words

///going.racked.entrusted

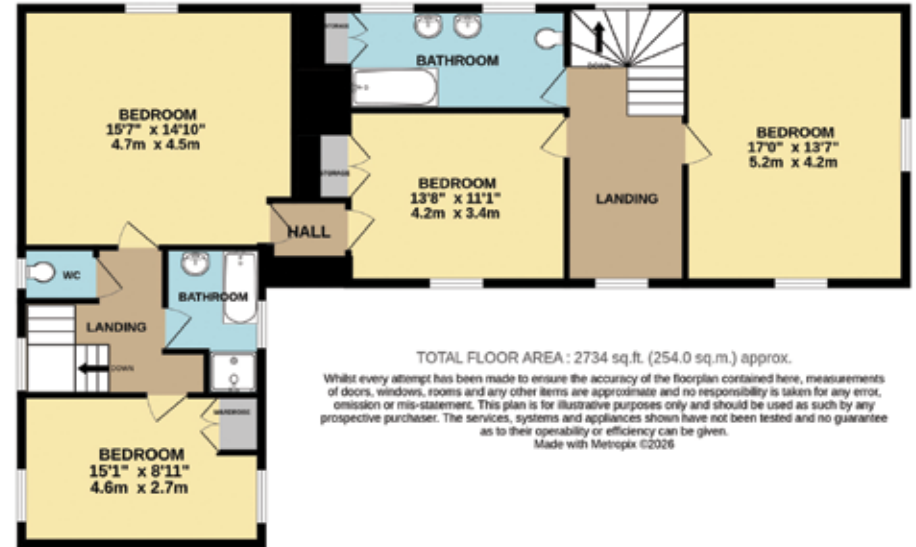
Misrepresentations Act 1967

JOHN GOODWIN Conditions under which particulars are issued - John Goodwin for himself and for the vendors or lessors of this property whose agent he is gives notice that: (i) The particulars are set out as a general outline only for the guidance of intending purchasers or lessees and do not constitute, not constitute part of, an offer or contract; (ii) All descriptions, dimensions, references to condition and necessary permissions for use and occupation and other details are given in good faith and are believed to be correct but any intending purchasers or tenants should not rely on them as statements or representations of fact but must satisfy themselves by inspection or otherwise as to the correctness of each of them. (iii) No person in the employment of John Goodwin has any authority to make or give any representation or warranty whatever in relation to the property.

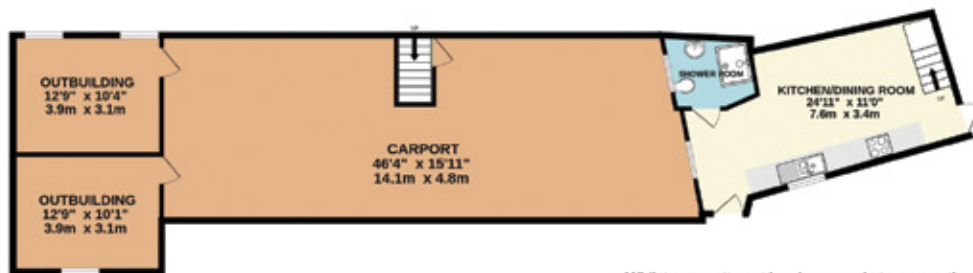


GROUND FLOOR
1475 sq.ft. (137.0 sq.m.) approx.

1ST FLOOR
1259 sq.ft. (117.0 sq.m.) approx.



TOTAL FLOOR AREA : 2734 sq.ft. (254.0 sq.m.) approx.
Whilst every attempt has been made to ensure the accuracy of the floorplan contained here, measurements of doors, windows, rooms and any other items are approximate and no responsibility is taken for any error, omission or mis-statement. This plan is for illustrative purposes only and should be used as such by any prospective purchaser. The services, systems and appliances shown have not been tested and no guarantee as to their operability or efficiency can be given.
Made with Metropix ©2026



GROUND FLOOR



1ST FLOOR

Whilst every attempt has been made to ensure the accuracy of the floorplan contained here, measurements of doors, windows, rooms and any other items are approximate and no responsibility is taken for any error, omission or mis-statement. This plan is for illustrative purposes only and should be used as such by any prospective purchaser. The services, systems and appliances shown have not been tested and no guarantee as to their operability or efficiency can be given.
Made with Metropix ©2026



