



Stepstone House Old Moor, Milton OX14 4ED



Stepstone House Old Moor

A charming and beautifully presented four-bedroom semi-detached Grade II listed residence, extending to approximately 1,496 sq ft of versatile living space arranged over three floors. Rich in character and period features, this delightful family home enjoys an enviable position on the edge of a highly sought-after village, overlooking picturesque open countryside.

Stepstone House is situated in a delightful location fronting a most attractive open aspect, offering easy access to many nearby amenities including, The Plum Pudding public house, village post office, the chemist, the Park Club gym and pool, and village shops. The thriving Milton Business Park offers a wide range of amenities including the new Signal Yard which brings 17 state-of-the-art, new build units offering a vibrant mix of food and beverage, retail and leisure venues, which also serves local residents and helps to create an excellent community spirit. The Milton Interchange is a short drive leading directly onto the A34 offering a quick route to the nearby towns of Abingdon (circa. 4 miles), Didcot (circa. 3 miles), Wantage (circa. 6 miles) and Oxford city centre (circa. 9 miles). For railway commuters there is easy access to Didcot mainline railway station providing a quick link to London Paddington station (approximately 45 minutes).

Bedrooms: 4 Bathrooms: 1 Reception Rooms: 2

Council Tax: D Tenure: Freehold EPC: Exempt





Key Features

- Entrance porch leading to inviting entrance hall featuring oak flooring, attractive wooden staircase and cloakroom
- Very spacious extended 18' x 15' kitchen/dining room offering an excellent selection of "in frame" floor and wall units complemented by many built-in electrical appliances complemented by large central island with granite working surfaces over, open plan to a delightful dining area featuring a spectacular glass vaulted ceiling, alternative doors to front and rear gardens - complemented by a wonderful professionally hand painted mural of the Italian lakes.
- Impressive double aspect living room featuring a high beamed ceiling, Inglenook fireplace with inset cast iron log burning stove, real wood flooring and doors opening onto the attractive rear gardens
- Delightful and very spacious main double bedroom benefiting from an extensive selection of fitted wall to wall wardrobe cupboards complemented by attractive wooden floorboards and stunning open countryside views
- Two further good size first floor bedrooms complemented by family bathroom with a large bath and shower
- Spectacular top floor double bedroom featuring exposed beams with high vaulted ceiling and fitted cupboards
- Front gardens lead to parking facilities opposite the property. To the rear are beautifully presented south-west facing landscaped gardens extending to 110' in length incorporating an extensive patio leading to circular lawn area with pathways leading to the rear cultivation areas, a second circular lawn, a barbeque area, and sweeping pathways, surrounded by very well stocked flower and shrub borders. The rear of the garden includes a vegetable patch, greenhouse and wooden garden store.









BRITISH
PROPERTY
AWARDS
2024

GOLD WINNER

ESTATE AGENT
IN ABINGDON



Introducing the Hodsons team...
...trust in our experience!

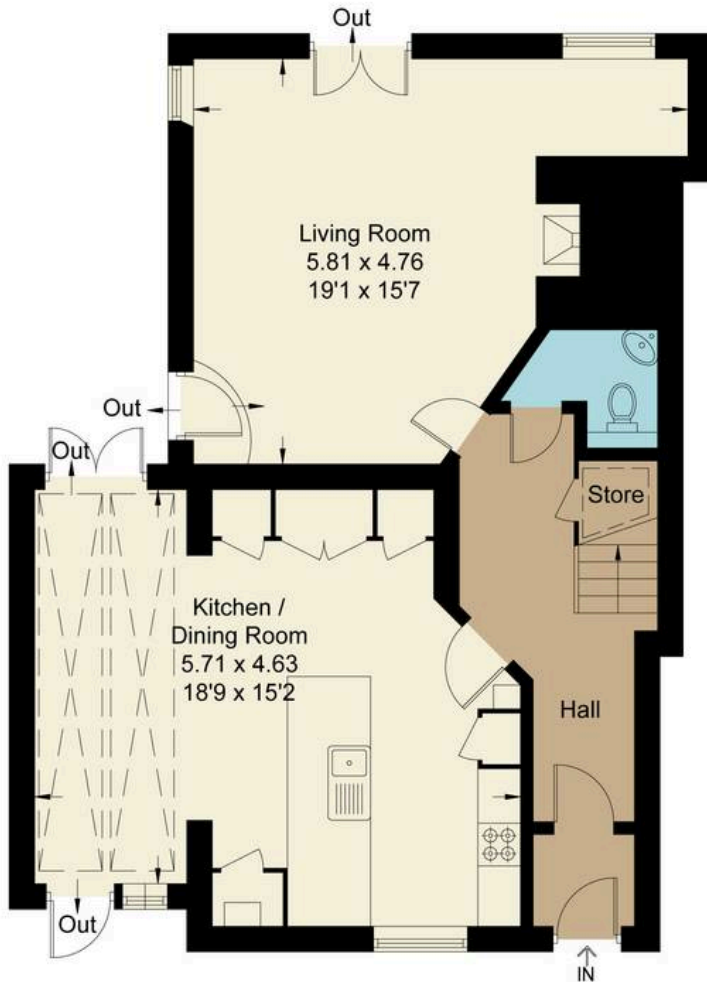


Stepstone House, OX14

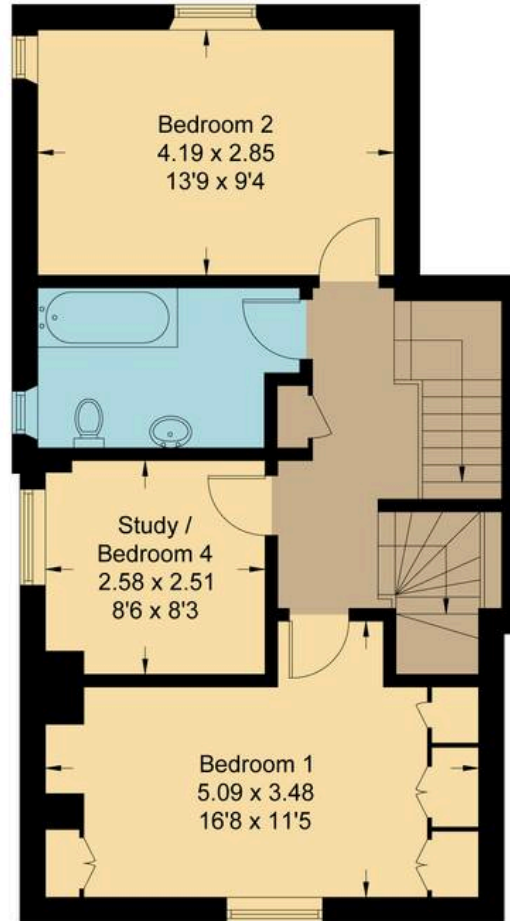
Approximate Gross Internal Area = 139.0 sq m / 1496 sq ft

For identification only - Not to scale

 = Restricted Head Height



Ground Floor



First Floor



Second Floor

Not to scale, for illustration and layout purposes only.
© Mortimer Photography. Produced for Hodsons.
Unauthorised reproduction prohibited



5 Ock Street, Abingdon,
Oxfordshire, OX14 5AL
T: 01235 553686
E: abingdon@hodsons.co.uk
www.hodsons.co.uk