

Franklyn James



Pointers Close, E14 3AP
£3,400 Per Calendar Month



Pointers Close, E14 3AP
£3,400 Per Calendar Month

- Unfurnished
- Available Now
- Riverside setting
- Three floors
- Four bedrooms
- Two bathrooms
- Private rear garden
- Ample storage
- Close to Canary Wharf
- Moments away to Mudchute and Island Gardens DLR stations

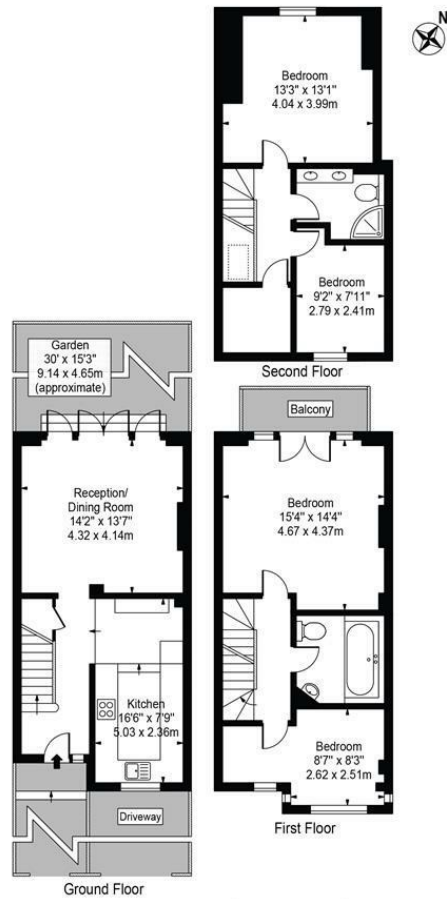
EPC rating- D
Tax band- E



****HMO Property - Suitable for sharers**** This stunning four-bedroom house spread across three floors in a captivating riverside setting. Boasting four bedrooms, two bathrooms, a spacious reception area alongside a secluded rear garden.

Positioned conveniently close to Mudchute and Island Gardens DLR stations, Pointers Close provides swift access to transportation

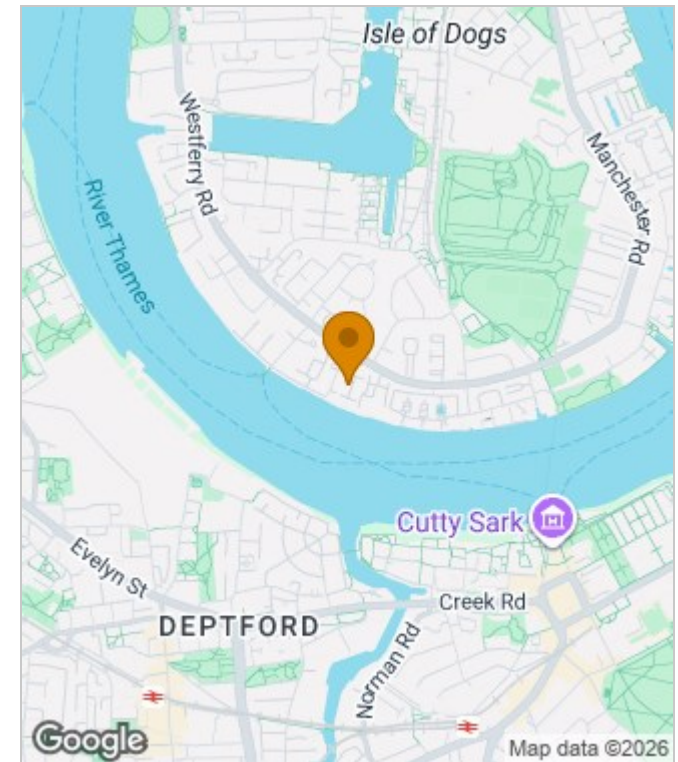
Pointers Close
 Approx. Gross Internal Area 1250 Sq Ft - 116.13 Sq M



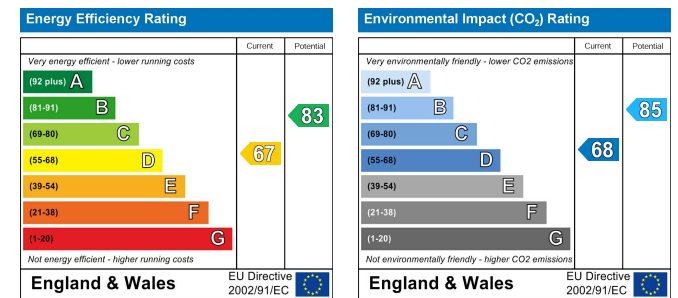
For Illustration Purposes Only - Not To Scale

This floor plan should be used as a general outline for guidance only and does not constitute in whole or in part an offer or contract. Any intending purchaser or lessee should satisfy themselves by inspection, searches, enquiries and full survey as to the correctness of each statement. Any areas, measurements or distances quoted are approximate and should not be used to value a property or be the basis of any sale or let.

Area Map



Energy Performance Graph



These particulars, whilst believed to be accurate are set out as a general outline only for guidance and do not constitute any part of an offer or contract. Intending purchasers should not rely on them as statements of representation of fact, but must satisfy themselves by inspection or otherwise as to their accuracy. No person in this firm's employment has the authority to make or give any representation or warranty in respect of the property.



29 Narrow Street, London, E14 8DP
 Tel: 02077911777 Email: lettings@franklynjames.co.uk <https://www.franklynjames.co.uk>