



CROWNLEIGH COURT, SW2

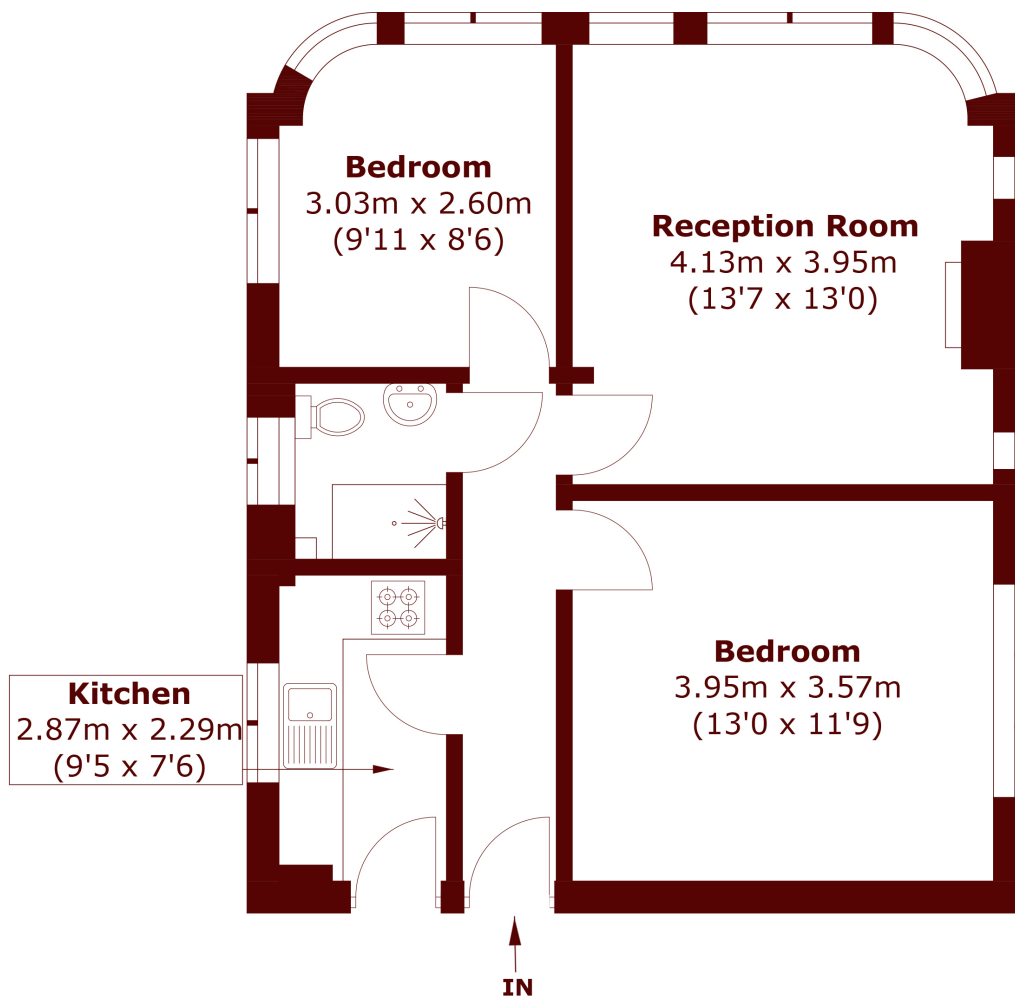
£2,300 per month

This bright and spacious two bedroom apartment is situated on the ground floor of a small secure apartment block. The property has wood floor throughout, a spacious living room with plenty of natural light with

Two Bedrooms
Large Reception Room
Separate Kitchen

Wooden floors
Close to station
Close to shops

STEP INSIDE CROWNLEIGH COURT



Total area (approx.): 52.3 sq. m (562.9 sq. ft)

Brixton
020 7871 5040

Energy Rating: D We aim to make our particulars both accurate and reliable. However, they are not guaranteed; nor do they form part of an offer or contract. If you require clarification on any points then please contact us, especially if you're traveling some distance to view. Please note that appliances and heating systems have not been tested and therefore no warranties can be given as to their good working order

**MARSH &
PARSONS**