



Kenton Close, Hartburn, Stockton-On-Tees, TS18 5EX

Occupying a pleasant position within one of Hartburn's most desirable cul-de-sacs, this spacious two bedroom detached bungalow offers versatile living accommodation, mature gardens and excellent potential for a range of buyers. Ideally placed close to Hartburn Village, local shops and the highly regarded Hartburn Primary School, the property is offered to the market with no onward chain.

The accommodation briefly comprises; entrance porch leading into a generous and welcoming hallway providing access to all principal rooms. There is a spacious dual aspect lounge/dining room featuring a fireplace and door opening onto the rear garden, creating a bright and airy living space ideal for both relaxing and entertaining. The kitchen is fitted with a range of wall and base units and benefits from direct access to the rear garden.

There are two well proportioned double bedrooms, both benefitting from fitted wardrobes, together with a shower room and separate WC.

Externally, the property enjoys a delightful mature south facing rear garden with patio seating area, lawn, established plants and shrubs, along with two useful brick stores. To the front of the property there is a lawned garden, driveway and garage providing off street parking.

Further benefits include double glazing and gas central heating.

Early viewing is highly recommended to appreciate the location, space and potential this lovely bungalow has to offer.

£350,000



Kenton Close, Hartburn, Stockton-On-Tees, TS18 5EX

PORCH

HALLWAY

LOUNGE

24'11" x 14'4" (7.59m x 4.37m)

KITCHEN

12'5" x 10'4" (3.78m x 3.15m)

WC

5'5" x 3'1" (1.65m x 0.94m)

BEDROOM ONE

13'7" x 11'10" (4.14m x 3.61m)

BEDROOM TWO

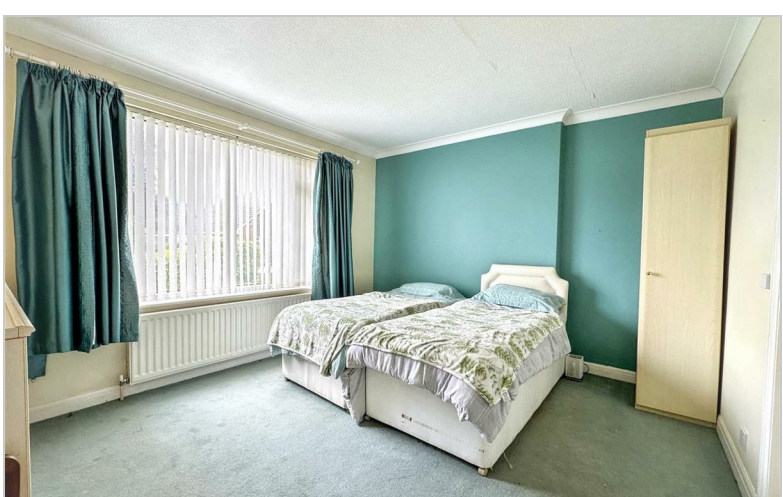
11'10" x 10'4" (3.61m x 3.15m)

BATHROOM

AML PROCEDURE

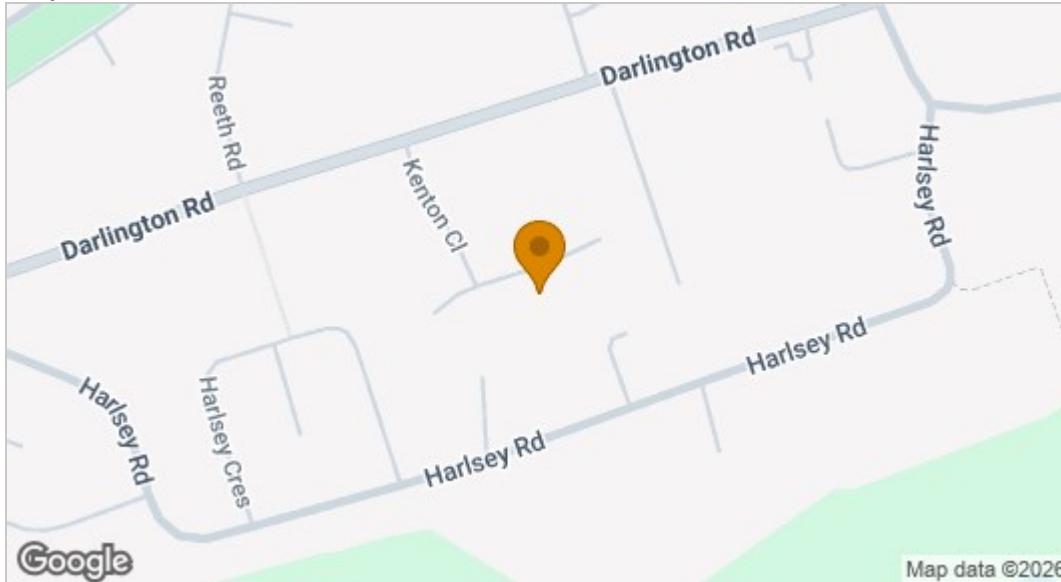
To comply with anti-money laundering regulations (AML) all estate agents must be registered with HMRC. Gowland White complies with this legislation by using an online AML risk assessment company, approved by the UK Government. Please note that all buyers are charged a fee of £36.00 (inc. VAT), for each buyer, to cover this process. These fees are payable before we can progress an agreed sale.



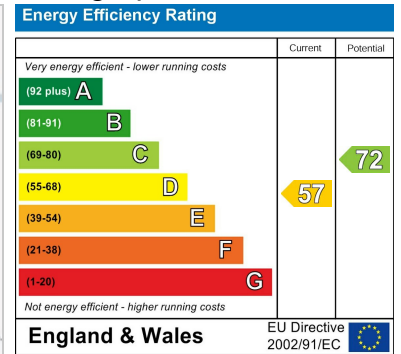




Map

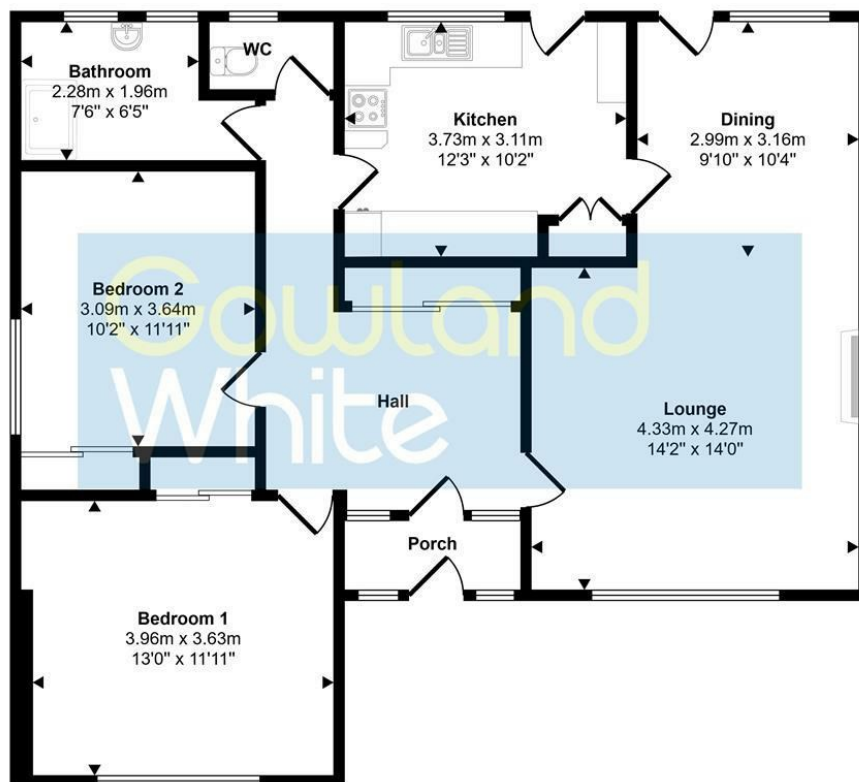


EPC graph



Floor Plan

Approx Gross Internal Area
94 sq m / 1017 sq ft



Floorplan

This floorplan is only for illustrative purposes and is not to scale. Measurements of rooms, doors, windows, and any items are approximate and no responsibility is taken for any error, omission or mis-statement. Icons of items such as bathroom suites are representations only and may not look like the real items. Made with Made Snappy 360.

VIEWING

Please contact us on 01642 615657 if you wish to arrange a viewing or would like more information.

These particulars, whilst believed to be accurate are set out as a general outline only for guidance and do not constitute any part of an offer or contract. Intending purchasers should not rely on them as statements of representation of fact, but must satisfy themselves by inspection or otherwise as to their accuracy. No person in this firm's employment has the authority to make or give any representation or warranty in respect of the property.

17 Bishop Street, Stockton on Tees, TS18 1SY

Tel: 01642 615657 Email: stockton@gowlandwhite.co.uk <https://www.gowlandwhite.co.uk/>