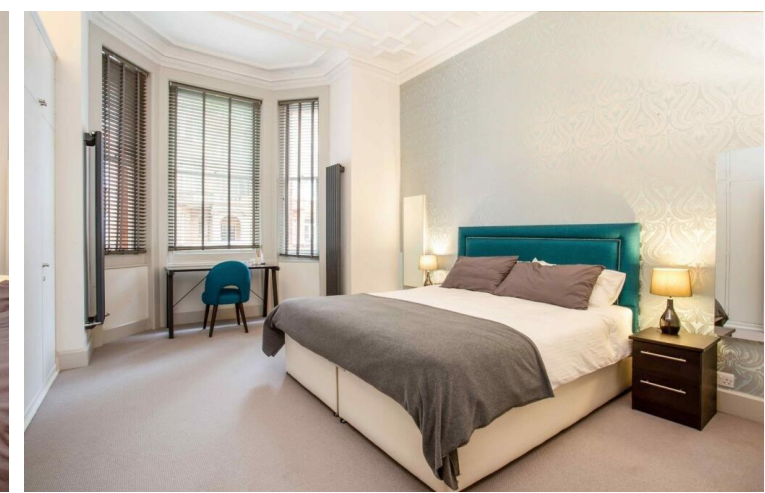




21-25 Sloane Gardens
Chelsea, SW1W

CHESTERTONS





This impressive apartment is located within a period building on Sloane Gardens. The contemporary kitchen is fitted with integrated appliances, under-cupboard lighting, and ample storage.

The living room features high ceilings, wood flooring, and a large bay window that floods the space with natural light. The spacious bedroom benefits from built-in wardrobes, while a modern bathroom is conveniently accessed from the hallway.

- One bedroom
- One reception
- One bathroom
- Porter
- Great location

£4,000 pcm

Additional tenant charges apply (fees apply to non-AST tenancies only)

Tenancy Agreement Fee: £300

References per Tenant/Guarantor: £60

Inventory check (approx. £100 – £250 inc. VAT)

chestertons.co.uk/property-to-rent/applicable-fees

Minimum Term: 12 months
Deposit Required: Five weeks
Local Authority: Royal borough Kensington and Chelsea
Council Tax Band: G
EPC Rating: To be confirmed
Furnished

Chestertons Chelsea Lettings

17 Cale Street

London

SW3 3QR

chelsealettingsusers@chestertons.co.uk

02075944750

chestertons.co.uk

Chesterton UK Services Limited trading as Chestertons for themselves and for the vendor of this property whose agents they are, give notice that (i) these particulars do not constitute any part of an offer or contract, (ii) all statements contained within these particulars are made without responsibility on the part of Chestertons or the vendor, (iii) whilst made in good faith, none of the statements contained within these particulars are to be relied upon as a statement or representation of fact, (iv) any intending purchasers must satisfy themselves by inspection or otherwise as to the correctness of each of the statements contained within these particulars, (v) the vendor does not make or give either Chestertons or any person in their employment any authority to make or give representation or warranty whatsoever in relation to this property. Wide angle lenses may be used. ©Copyright Chestertons | Chesterton Global Ltd | Registered Office 40 Connaught Street, Hyde Park, London W2 2AB Registered Company Number 05334580.



This paper is
100% recyclable