



Robin Way, Didcot

Oxfordshire



Robin Way, Didcot

Hodsons are delighted to bring to the market this beautifully presented three-bedroom link-detached home, ideally positioned in a quiet no-through section of Robin Way, Didcot. Coming to market with a closed chain.

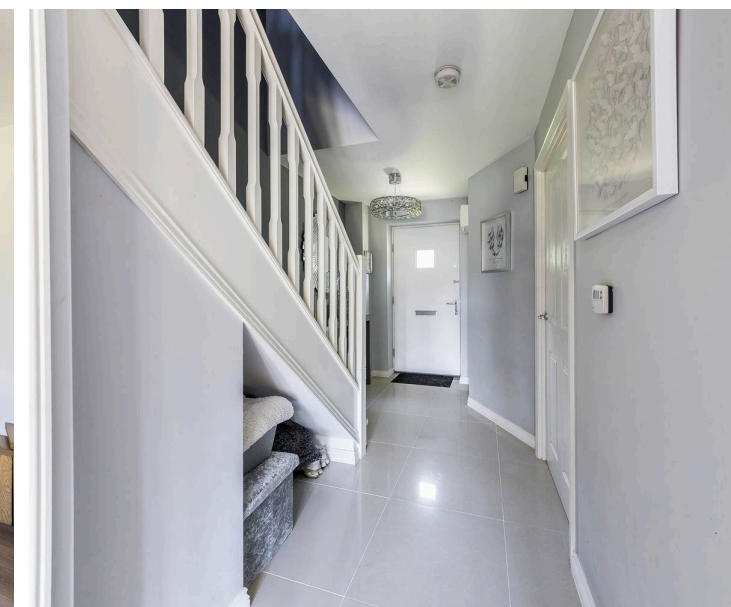
The property is entered via a welcoming hallway with a useful storage cupboard and ground-floor cloakroom. The well-appointed kitchen offers generous cupboard space, room for white goods, and ample space for a breakfast table and chairs. To the rear, the bright and airy lounge provides a comfortable living space and features French doors opening directly onto the garden, creating a seamless indoor-outdoor flow.

Upstairs, the spacious principal bedroom benefits from a modern en-suite shower room, complemented by a further double bedroom, a well-proportioned single bedroom, and a contemporary family bathroom.

Externally, the private rear garden is predominantly laid to lawn with established shrubs and planting, and further enhanced by both decking and patio areas—ideal for summer entertaining and family enjoyment. To the front, the property offers driveway parking for two vehicles and access to a single garage, which further benefits from a courtesy door through to the garden.

Early viewing is highly recommended to fully appreciate the standard of accommodation and desirable location on offer.

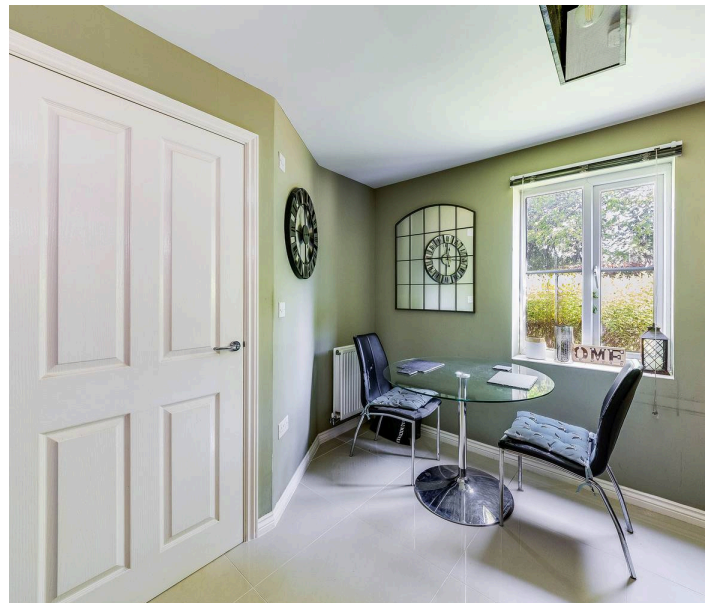
Set within the popular Great Western Park development, the property enjoys excellent access to local amenities including Boundary Park, Asda, Costa, and The Station Garden pub, as well as Didcot town centre and mainline railway station. The area is well served by both primary and secondary schools, regular bus services, and convenient road links to the A34, providing onward access to the M4 and M40.





Robin Way, Didcot

- Three bedroom link detached house situated on Robin Way, Didcot
- Coming to market with a closed chain
- Welcoming entrance with useful storage and cloakroom
- Bright and airy lounge with French doors leading out into the garden
- Kitchen has good storage and space for free standing appliances. There is space for a table and chairs
- Generous main bedroom with en-suite
- Second double bedroom and a comfortable single
- Modern family bathroom with shower over the bath
- Driveway parking and access to the single garage which has courtesy door into the garden











Robin Way, OX11

Approximate Gross Internal Area = 80.10 sq m / 862 sq ft

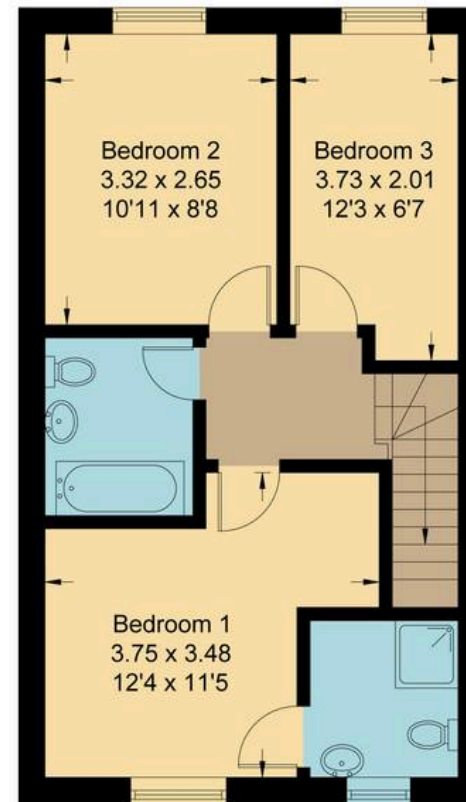
Garage = 19.60 sq m / 211 sq ft

Total = 99.70 sq m / 1073 sq ft

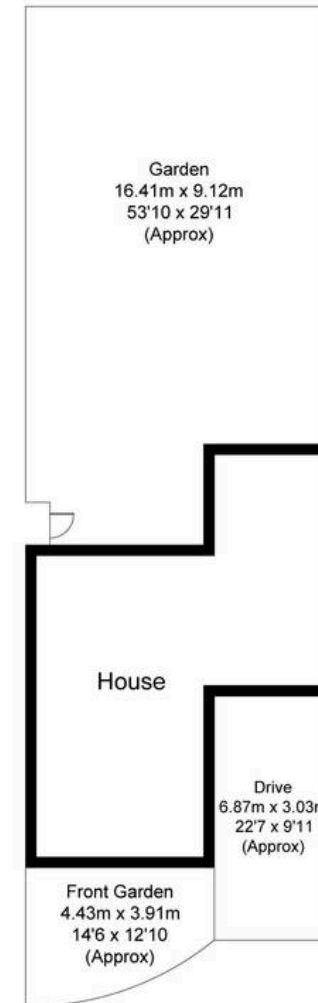
For identification only - Not to scale



Ground Floor



First Floor



Not to scale, for illustration and layout purposes only.
© Mortimer Photography. Produced for Hodsons.
Unauthorised reproduction prohibited



Hodsons
...your move, our passion
Sales | Lettings

220 Broadway, Didcot
Oxfordshire, OX11 8RS
T: 01235 511406
E: didcot@hodsons.co.uk
www.hodsons.co.uk