



North End Road, W14

£2,600 Per calendar month

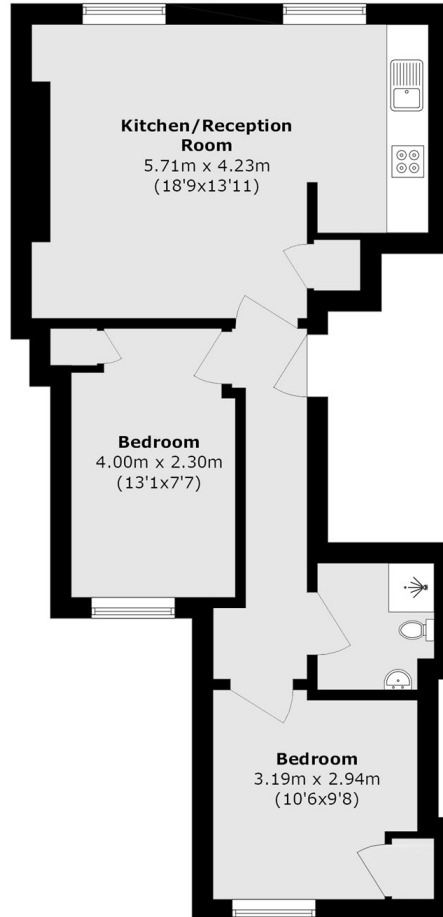
Presenting this spacious two bedroom apartment conveniently located close to Queen's Club Tennis. This property offers a large open plan living and kitchen area and two double bedrooms.

Conveniently located on North End Road, within two hundred yards to West Kensington underground station and the A4 for easy access into and out of central London. With good bus links to Kensington High Street and Fulham Broadway.

Features

- Two Bedrooms
- One Bathroom
- Wood Flooring
- Second Floor Flat
- Fitted Storage
- Open Plan Living

North End Road, London, W14



Total area (approx.): 50.7 sq. m (545.7 sq. ft)