



3 ELM COURT BLATCHINGTON ROAD, SEAFORD, BN25 2FD

£495,000

This well designed three bedroom mid terrace townhouse offers modern living in a peaceful yet highly convenient location.

Set behind an attractive flint wall and accessed via a private driveway, the property forms part of a small collection of thoughtfully designed homes, just a short distance from Seaford town centre, seafront and railway station, with direct links to Brighton, Gatwick and London.

The accommodation is arranged over three floors and centres around a bright and spacious open plan living area, designed to maximise light and flow, with direct access onto a private balcony measuring approximately 21ft by 4ft 6in, ideal for both entertaining and day to day living.

The property offers three well proportioned bedrooms, including a main bedroom with en-suite, alongside a modern family bathroom serving the remaining rooms.

Finished to a high standard throughout by a respected local family run building company, the house benefits from a contemporary specification including an air source heat pump, underfloor heating and full fibre broadband, providing energy efficiency alongside everyday comfort.

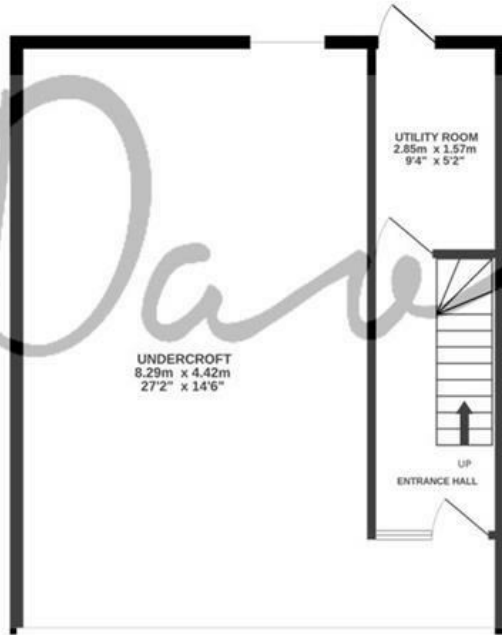
Further benefits include three private parking spaces, an undercroft, utility room and a 10 year new build warranty.

Seaford itself offers an appealing coastal lifestyle, with access to the South Downs, seafront walks, a range of independent shops and cafés, and well regarded schools, all within easy reach of Brighton and Eastbourne.

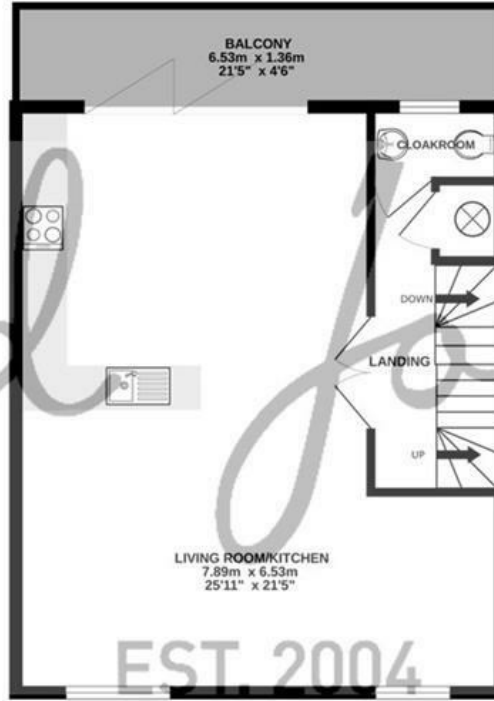
- 10 YEAR NEW BUILD WARRANTY
- THREE BEDROOM MID TERRACE TOWN HOUSE
- THREE PRIVATE PARKING SPACES INCLUDING LARGE UNDERCROFT WITH ELECTRIC VEHICLE CHARGING POINT
- AIR SOURCE HEAT PUMPS AND PART UNDERFLOOR HEATING
- FULL FIBRE BROADBAND
- UTILITY ROOM WITH DIRECT ACCESS TO PRIVATE GARDEN
- MAIN BEDROOM WITH EN-SUITE, TWO FURTHER DOUBLE BEDROOMS AND A FAMILY BATHROOM
- SPACIOUS OPEN PLAN LIVING AND KITCHEN AREA WITH BIFOLD DOORS OPENING ONTO THE EXPANSIVE BALCONY
- LOCATED WITHIN A FEW MINUTES WALK FROM SEAFORD TOWN CENTRE, RAILWAY STATION AND BUS SERVICES
- EXCELLENT PRIMARY AND SECONDARY SCHOOLS NEARBY



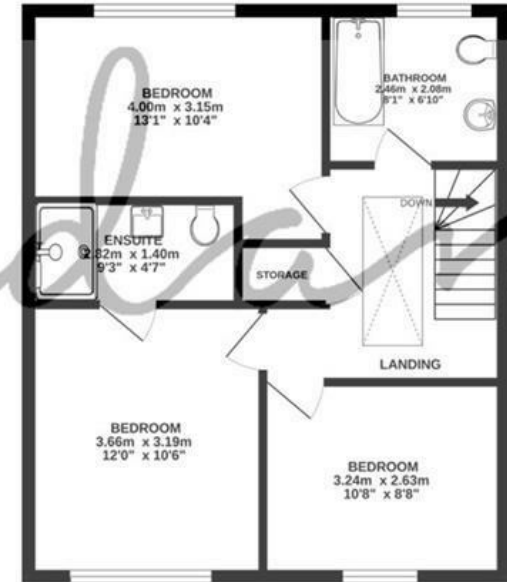
GROUND FLOOR  
51.5 sq.m. (554 sq.ft.) approx.



1ST FLOOR  
51.5 sq.m. (554 sq.ft.) approx.



2ND FLOOR  
48.7 sq.m. (524 sq.ft.) approx.



3 ELM COURT BLATCHINGTON ROAD SEAFORD

TOTAL FLOOR AREA : 151.7 sq.m. (1632 sq.ft.) approx.

Whilst every attempt has been made to ensure the accuracy of the floorplan contained here, measurements of doors, windows, rooms and any other items are approximate and no responsibility is taken for any error, omission or mis-statement. This plan is for illustrative purposes only and should be used as such by any prospective purchaser. The services, systems and appliances shown have not been tested and no guarantee as to their operability or efficiency can be given.

Made with Metropix ©2025



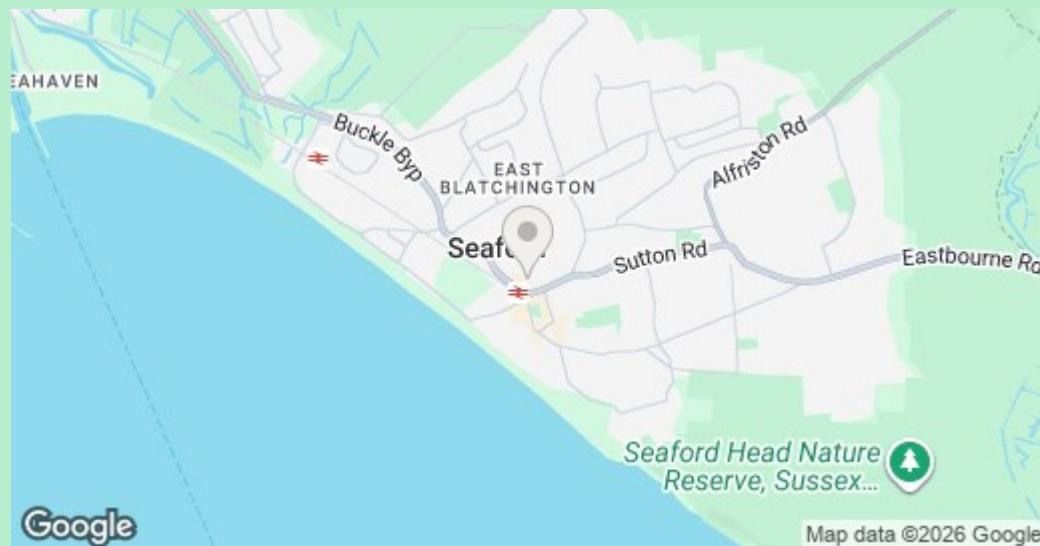
## COUNCIL TAX BAND

Local Authority: Lewes District Council

Council Tax Band: New Build

## ENERGY PERFORMANCE CERTIFICATES (EPC)

Energy Efficiency Rating: C



## DISCLAIMER

Money Laundering Regulations 2017: Intending purchasers will be asked to produce identification documentation upon acceptance of any offer. We would ask for your cooperation in producing such in order that there will not be a delay in agreeing the sale.

General: Whilst we endeavour to make our sales particulars fair, accurate and reliable they are only a general guide to the property and accordingly if there is any point which is of particular importance to you please contact the office and we will be pleased to check the position for you. Buyers must check the availability of any property and make an appointment to view, before embarking on any journey to see a property. Items shown in photographs are NOT included unless specifically mentioned within the sales particulars. They may however be available by separate negotiation.

Measurements: These approximate room sizes are only intended as general guidance. You must verify the dimensions carefully before ordering carpets or any built in furniture.

Services: Please note we have not tested any apparatus, equipment, fixtures and fittings or services and so cannot verify that they are in working order or fit for the purpose. A Buyer is advised to obtain verification from their Solicitor or Surveyor. References to the Tenure of a Property are based on information supplied by the Seller. The Agent has not had sight of the title documents. A Buyer is advised to obtain verification from their Solicitor. These particulars are issued in good faith but do not constitute representations of fact or form part of any offer or contract.

01323 898414

[sales@davidjordan.co.uk](mailto:sales@davidjordan.co.uk)

[davidjordan.co.uk](http://davidjordan.co.uk)

*David Jordan*

EST. 2004