



101 Bankhouse Road

Brandlesholme, Bury



101 Bankhouse Road

Brandlesholme, Bury

Well-maintained 2-bed bungalow with modern kitchen, shower room, garage, sunny garden, and ample parking in a sought-after area near shops, schools, and transport links.

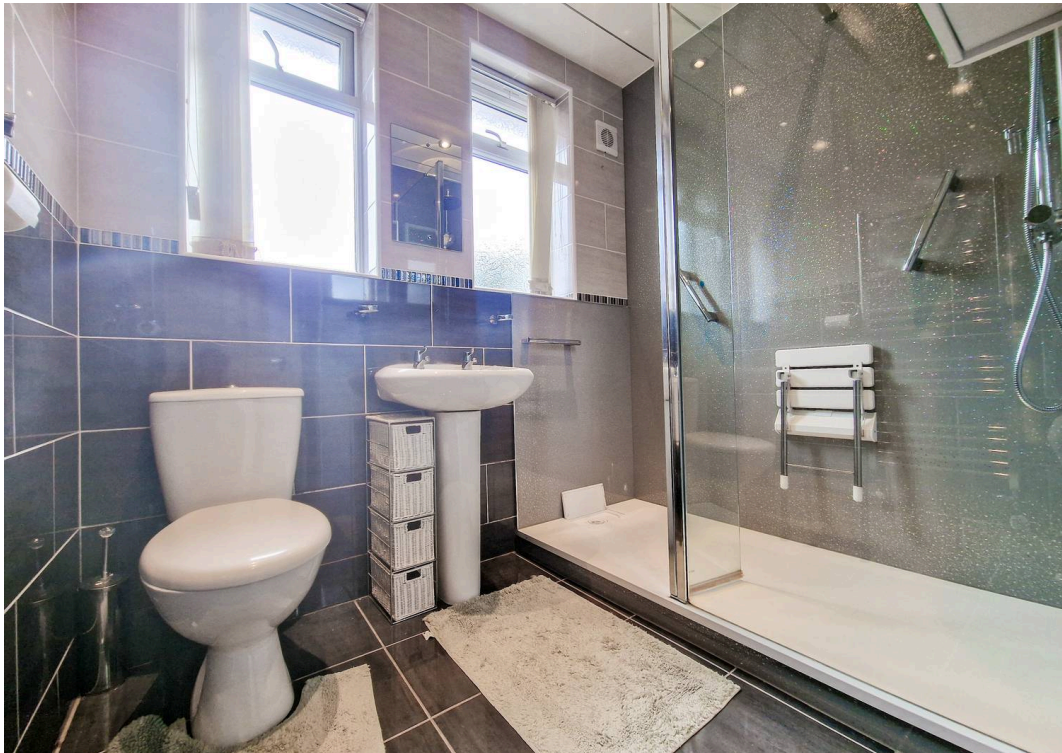
Council Tax band: C

Tenure: Leasehold

EPC Energy Efficiency Rating: D

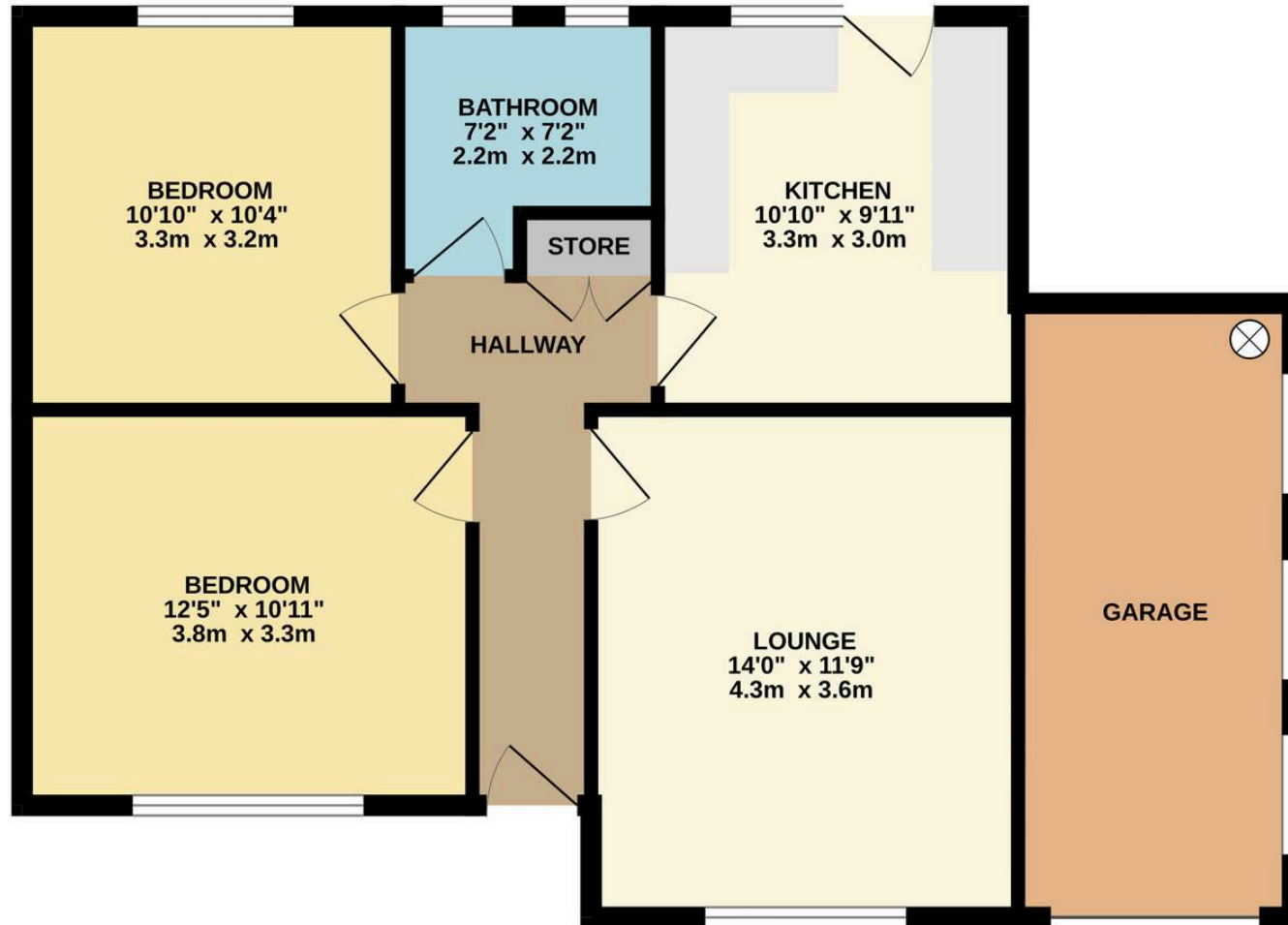
- NO ONWARD CHAIN - Mature true bungalow offering two double bedrooms, generous parking, sunny gardens and a prime Brandlesholme setting
- Spacious lounge and 2 well-sized bedrooms
- Modern shower suite designed for easy maintenance and everyday convenience
- Fitted kitchen with integrated appliances & good storage, opening to the rear garden
- Electric-door garage with power and lighting, ideal for secure parking or hobby use
- Private rear garden featuring a raised patio & level lawn in a sun-trap position
- Attractive frontage with a wide driveway and neat lawned garden enhancing kerb appeal
- Brandlesholme location close to shops, medical services, bus routes and everyday amenities valued by mature buyers
- Strong local links offering easy access to Bury town centre, countryside walks and well-regarded schools for visiting family







GROUND FLOOR
759 sq.ft. (70.5 sq.m.) approx.



TOTAL FLOOR AREA : 759 sq.ft. (70.5 sq.m.) approx.

Whilst every attempt has been made to ensure the accuracy of the floorplan contained here, measurements of doors, windows, rooms and any other items are approximate and no responsibility is taken for any error, omission or mis-statement. This plan is for illustrative purposes only and should be used as such by any prospective purchaser. The services, systems and appliances shown have not been tested and no guarantee as to their operability or efficiency can be given.
Made with Metropix ©2026



HARRISON ESTATE AGENTS

Harrison Estate Agents, 10 Bolton Street - BL9 0LQ

0161 797 8616

info@harrison-estates.co.uk

www.harrison-estates.co.uk