



OFFICE HOURS:

Monday to Friday	9 am	to	5 pm
Saturday	9 am	to	2 pm
Sunday and Bank Holidays	12 noon	to	2 pm

10 good reasons to choose DMA

- * Open 7 days a week.
- * Filey's longest established family run independent estate agency.
- * Prompt efficient friendly service.
- * 360° virtual tours and floor plans.
- * Free advertising: no sale - no charge.
- * Free no obligation market valuation.
- * Free accompanied viewing.
- * Dedicated sales progression.
- * Prominent town centre location.
- * Modern walk-round self selection display.

RESIDENTIAL SALES

DMA ESTATE AGENTS

COMMERCIAL SALES

Proprietors: David Mansfield ATTON FNAEA.
Samantha ADDISON
www.dmaestateagents.co.uk
ESTABLISHED 1992



These particulars are intended only to give a fair description of the property, as a guide to prospective buyers. Accordingly a) their accuracy is not guaranteed and neither DMA Estate Agents nor the vendor(s) accept any liability in respect of their contents; b) they do not constitute an offer or contract of sale, and c) any prospective purchaser should satisfy themselves by inspection or otherwise as to the correctness of any statement or information in these particulars.

DMA

ESTATE AGENTS



8 STONEGATE, HUNMANBY YO14 0NS



Freehold £265,000

FEATURES

- * Individual two bedroom detached dormer bungalow.
- * Located in the centre of this popular large village.
- * Convenient for the shops and most local amenities.
- * Gas central heating to radiators.
- * Upvc double glazed windows.
- * Modern fitted dining kitchen and shower room plus en-suite bathroom.
- * Block paved drive to large brick garage.
- * Private garden.
- * **EPC Rating: C.**
- * Viewing is highly recommended.

ACCOMMODATION IN BRIEF

GROUND FLOOR: Upvc Door to Entrance Porch. Dining Kitchen. Lounge. Bedroom. Shower Room.

FIRST FLOOR: Large bedroom with en-suite.

OUTSIDE: Front garden. Side garden. Block paved drive to large brick built garage.

26 Belle Vue Street, FILEY, North Yorks. YO14 9HY. Telephone: 01723 515527
www.dmaestateagents.co.uk / www.rightmove.co.uk

Upvc Front Door to:

ENTRANCE PORCH

Tiled floor. Upvc double glazed window. **Upvc double glazed door to:**



DINING KITCHEN

6.19m x 2.56m (20'4" x 8'5")

Inset stainless steel sink and drainer. Good range of modern base cupboards with new marble effect work tops over. Matching wall cupboards. Integrated dishwasher and fridge / freezer. Induction hob. Built-in eye level oven and microwave. Oak island. Larder cupboard. Oak beams. Laminate flooring. Three upvc double glazed windows.



LOUNGE

3.96m plus bay x 3.50m (13'0" plus bay x 11'6")

Log burner. Upvc double glazed window. Upvc double glazed bay window. **Door to side entrance porch.**



PORCH

Tiled floor. Upvc double glazed window. **Upvc door.**



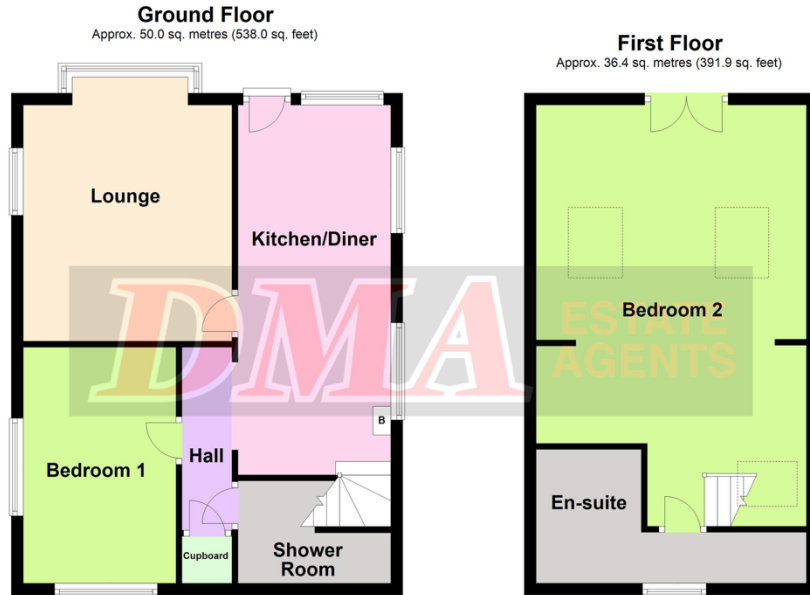
BEDROOM ONE

3.96m into wardrobes x 2.56m
(13'0" into wardrobes x 8'5")

Fitted wardrobes with sliding doors. Tall white modern radiator. Two upvc double glazed windows.



FLOOR PLAN:



Total area: approx. 86.4 sq. metres (929.9 sq. feet)

Please note this floor plan is only a guide and not to scale.
Plan produced using PlanUp.

8 Stonegate, Hunmanby

SHOWER ROOM

Shower cubicle with electric shower. Handbasin and wc. Inset spotlights. Extractor fan. Modern radiator. Upvc double glazed windows.



HALLWAY

Coats cupboard / Pantry.

Stairs to:

FIRST FLOOR

BEDROOM TWO

6.88m max x 4.54m into eaves
(22'7" max x 14'11" into eaves)

Inset spotlights. Radiator. Three 'Velux' windows. **Upvc patio doors to Juliette balcony.**



/ continued over

ENSUITE BATHROOM

Soap dish bath, handbasin in vanity unit and wc with concealed cistern. Inset spotlights. Upvc double glazed window.



OUTSIDE:

Front and side gardens. **Block paved drive to:**



GARAGE

4.82m x 4.14m (15'10" x 13'7")

Large brick and tiled with light and power. Utility Area with deep 'Butlers' sink and plumbing for automatic washing machine.



LOCATION:

Hunmanby is a large village three miles inland from Filey and nine miles from both Scarborough and Bridlington. The village offers a wide range of shops, chemist, doctors' surgery and health centre, dentists, optician, library, community centre, sub Post Office, Primary School, two churches, a sports and social club together with both bus and train services.

Council Tax Band C.

DIRECTIONS:

Take the Bridlington road from Filey and turn right just after the Royal Oak level crossing. Follow the signposts into Hunmanby village continuing up Stonegate after the turning for Hungate Lane. The property is located on the left hand side at the top of Stonegate.

Viewing strictly by appointment only through DMA Estate Agents