



An excellent three-bedroom semi-detached house with multiple OFF-STREET PARKING SPACES and a sizeable laid to lawn. Various amenities are found within the local area, along with SCHOOLS and brilliant travel connections.

- Three-Bedroom Semi Detached House
- Open Plan Lounge/Diner
- Ample Off-Street Parking
- Spacious Garden
- Three-Piece Bathroom
- Modern Kitchen
- Nearby to Rochford Train Station
- Close to Various Amenities
- Within Arms Reach of Well Regarded Shops

## Tylney Avenue

Rochford

**£1,600 Per Month**

Per Month



# Tylney Avenue



This good sized three-bedroom semi-detached house has been presented to a good standard throughout. Inside, the ground floor offers an open plan lounge/diner, a modern kitchen. You will also find a spacious utility room and a WC. Upstairs, you will find two double bedrooms, one single bedroom, a three-piece piece bathroom. To the front, you will find access to off-street parking on a private driveway, and to the rear you will find a sizeable laid to lawn garden.

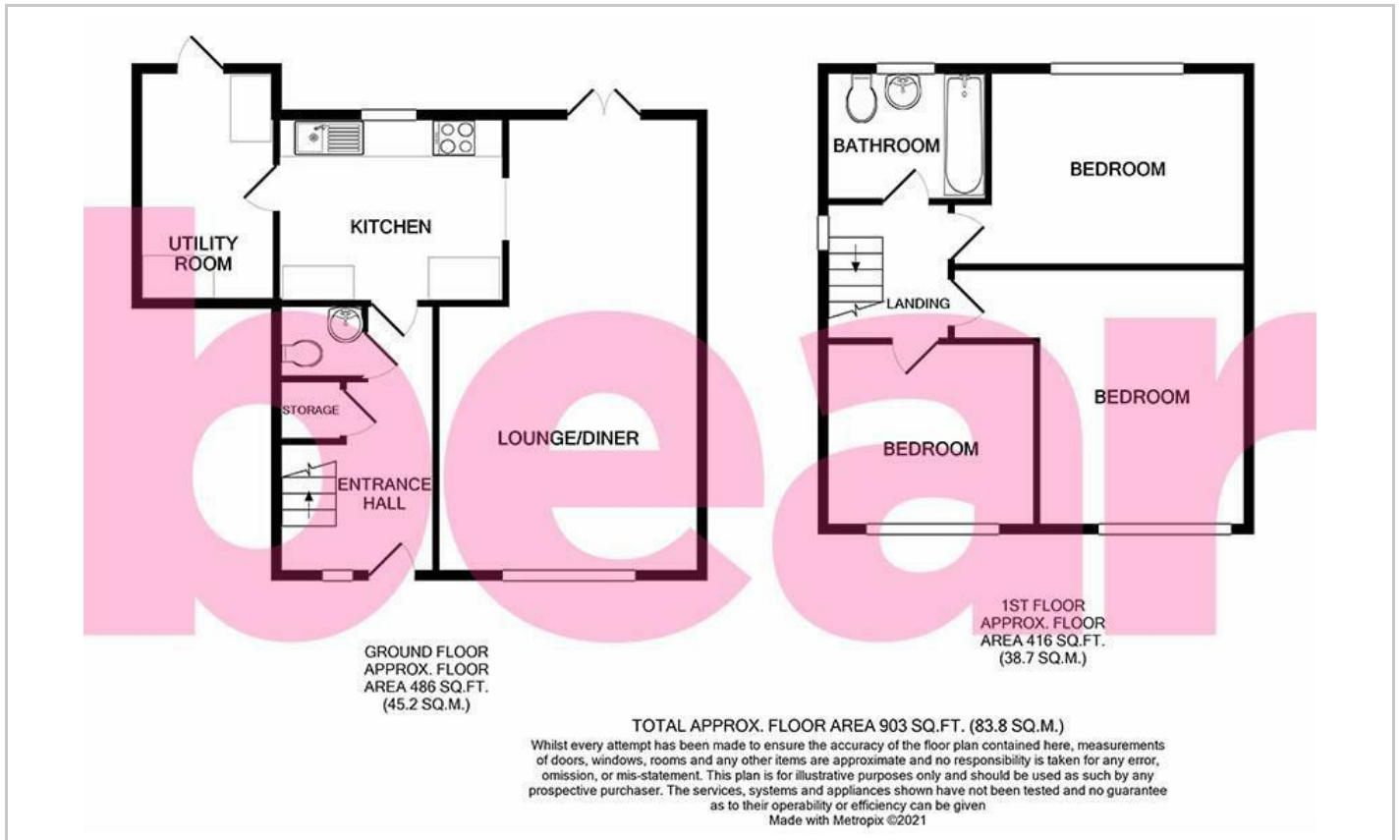
Within the area, you will find favoured parks, as well as ideal amenities. Bus links are just a short walk away, whilst Rochford Train Station is nearby to the property and provides direct access to London on the Greater Anglia line.

CALL BEAR LETTINGS TO VIEW!

Entrance Hall  
Lounge/Diner - 12'3 x 21'3  
Kitchen - 10'7 x 8'8  
Utility Room - 10'10 x 6'5  
WC  
Landing  
Bathroom - 7'6 x 6'2  
Bedroom One - 14'1 x 9'2  
Bedroom Two - 13'7 x 11'3  
Bedroom Three - 9'6 x 7'8



## Floor Plan



## Area Map



## Viewing

Please contact our Westcliff-on-Sea Office on 01702 899 780 if you wish to arrange a viewing appointment for this property or require further information.

These particulars, whilst believed to be accurate are set out as a general outline only for guidance and do not constitute any part of an offer or contract. Intending purchasers should not rely on them as statements of representation of fact, but must satisfy themselves by inspection or otherwise as to their accuracy. No person in this firm's employment has the authority to make or give any representation or warranty in respect of the property.

797 London Road, Westcliff-on-Sea, Essex, SS0 9SY

Office: 01702 899 780 [info@bearlettings.co.uk](mailto:info@bearlettings.co.uk)

## Energy Efficiency Graph

