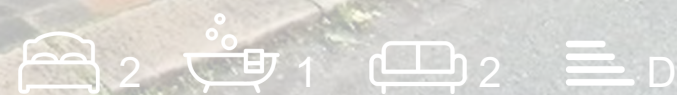


Lewis  
King



197 Alton Street, Crewe, CW2 7PU

£110,000







£110,000

# 197 Alton Street

Crewe, CW2 7PU

- Large Period Home
- Scope for Modernising
- Spacious Rear Garden
- Council Tax Band A
- Set Over Three Floors
- Cellar/Utility Potential
- Off-Road Parking Available at Side
- Freehold Home

Welcome to this substantial period home, perfectly poised for those looking to create their ideal family residence. Set over three generous floors, this house presents an exciting opportunity for modernising, allowing you to stamp your own style on every space.

The ground floor boasts an excellent flow for family living and entertaining, featuring a bright lounge that leads through to a separate dining room. The kitchen, with access to a charming balcony, provides a perfect morning coffee spot.

Venture up to the first floor to discover two spacious double bedrooms, including the impressive Bedroom 2, and a well-appointed bathroom.

The lowest level offers incredible versatility and potential. Here, you will find a vast cellar space, a utility room, and additional storage, all leading out to a covered garden access area. Imagine transforming this level into a fantastic home gym, cinema room, or a self-contained annex!

Outside, the property truly shines with a spacious rear garden, ready to become your private oasis. A handy feature is also the space available down the side of the house offering off-road parking for multiple vehicles.

With its excellent proportions and potential for transformation, this Alton Street gem is ready for its next chapter. It's not just a house; it's a blank canvas for your future.







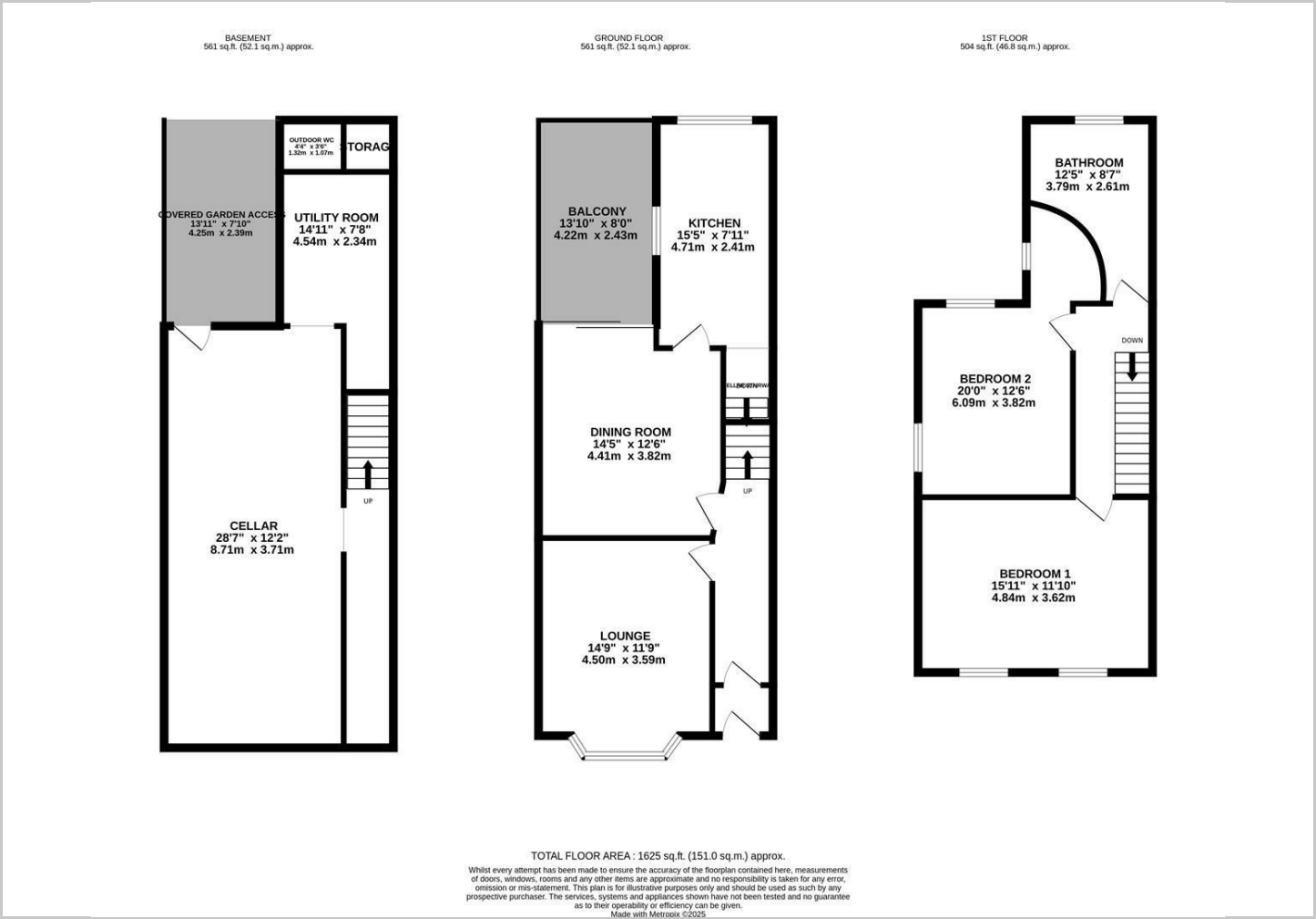
Directions







Floor Plans

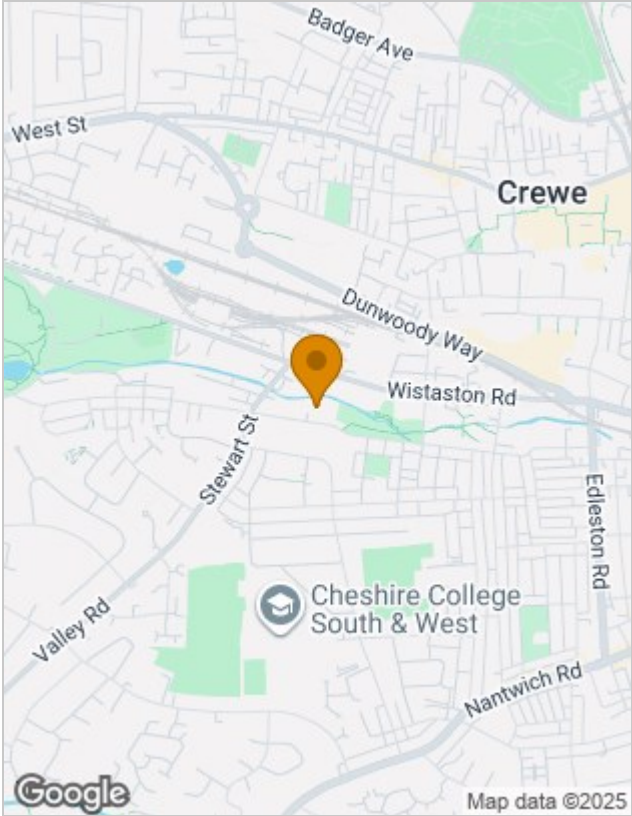


Viewing

Please contact our Sandbach Office on 01270 353753 if you wish to arrange a viewing appointment for this property or require further information.

The particulars are set out as a general outline only for the guidance of intended purchasers or lessees, and do not constitute, any part of a contract. Nothing in these particulars shall be deemed to be a statement that the property is in good structural condition or otherwise nor that any of the services, appliances, equipment or facilities are in good working order. Purchasers should satisfy themselves of this prior to purchasing.

Location Map



Energy Performance Graph

