



**36 Blenheim Court, Kingsquarter, Maidenhead SL6 1AQ**



**welcome to**

**36 Blenheim Court, Kingsquarter, Maidenhead**

Situated within the highly sought after Kingsquarter development, this spacious two bedroom, two bathroom apartment offers modern living just moments from the town centre and mainline station.

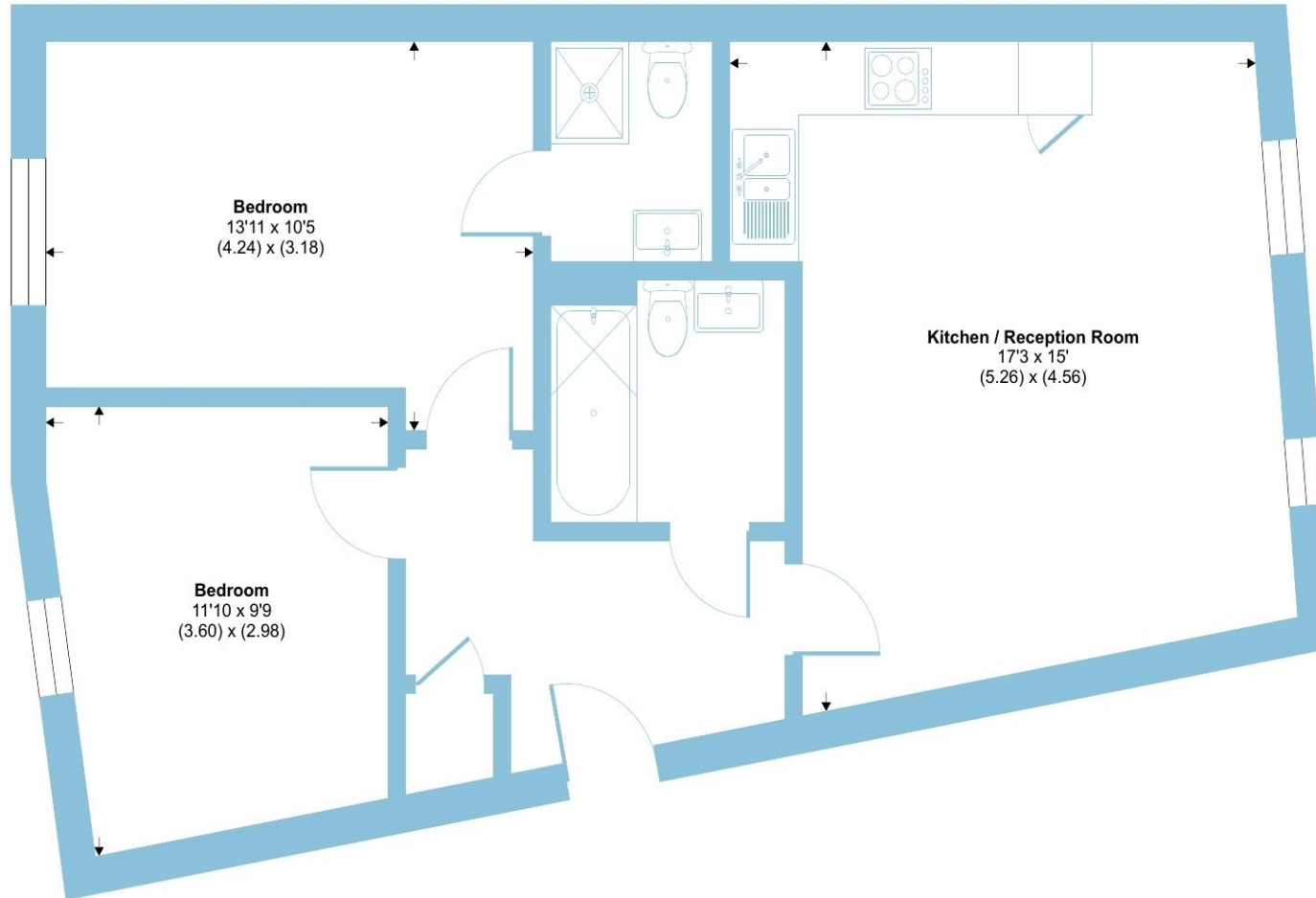




## Blenheim Court, Kingsquarter, Maidenhead, SL6

Approximate Area = 654 sq ft / 60.7 sq m

For identification only - Not to scale



**SECOND FLOOR**



Floor plan produced in accordance with RICS Property Measurement 2nd Edition, Incorporating International Property Measurement Standards (IPMS2 Residential). © nichecom 2026. Produced for Barnard Marcus. REF: 1410711



The property features a generous open-plan living room and kitchen, creating a bright and sociable space ideal for relaxing or entertaining. Both bedrooms are well-proportioned doubles, with the main bedroom further enhanced by its own contemporary en-suite shower room. A stylish family bathroom serves the second bedroom and guests, completing the well-designed layout.

The apartment also benefits from a strong lease with 107 years remaining, providing long-term peace of mind for buyers. Additional advantages include allocated/residents' parking, making day-to-day living convenient and stress-free. With its prime location, attractive presentation and modern specification, this property represents an excellent opportunity for both homeowners and investors seeking a quality apartment in a popular and well connected setting.

welcome to

## 36 Blenheim Court, Kingsquarter

- FIRST FLOOR MODERN APARTMENT
- SOUGHT AFTER KINGSQUARTER DEVELOPMENT
- CLOSE TO TOWN CENTRE & STATION
- TWO DOUBLE BEDROOMS
- EN-SUITE TO MAIN BEDROOM
- MODERN OPEN PLAN LIVING & KITCHEN AREA
- RESIDENTS/ALLOCATED PARKING
- GOOD ACCESS TO LOCAL SCHOOLS - INCLUDING OLDFIELD PRIMARY

Tenure: Leasehold EPC Rating: B

Council Tax Band: D Service Charge: 2000.00

Ground Rent: 300.00

This is a Leasehold property with details as follows; Term of Lease 125 years from 01 Jan 2007. Should you require further information please contact the branch. Please Note additional fees could be incurred for items such as Leasehold packs.

# £275,000



Please note the marker reflects the postcode not the actual property

check out more properties at [rogerplatt.co.uk](https://rogerplatt.co.uk)



Property Ref:  
MHD123574 - 0001

1. MONEY LAUNDERING REGULATIONS Intending purchasers will be asked to produce identification documentation at a later stage and we would ask for your co-operation in order that there is no delay in agreeing the sale. 2. These particulars do not constitute part or all of an offer or contract. 3. The measurements indicated are supplied for guidance only and as such must be considered incorrect. Potential buyers are advised to recheck measurements before committing to any expense. 4. We have not tested any apparatus, equipment, fixtures or services and it is in the buyers interest to check the working condition of any appliances. 5. Where an EPC, or a Home Report (Scotland only) is held for this property, it is available for inspection at the branch by appointment. If you require a printed version of a Home Report, you will need to pay a reasonable production charge reflecting printing and other costs. 6. We are not able to offer an opinion either written or verbal on the content of these reports and this must be obtained from your legal representative. 7. Whilst we take care in preparing these reports, a buyer should ensure that his/her legal representative confirms as soon as possible all matters relating to title including the extent and boundaries of the property and other important matters before exchange of contracts.

Roger Platt is a trading name of Sequence (UK) Limited which is registered in England and Wales under company number 4268443, Registered Office is Cumbria House, 16-20 Hockliffe Street, Leighton Buzzard, Bedfordshire, LU7 1GN. VAT Registration Number is 500 2481 05.

  
roger platt



**01628 773333**



[Maidenhead@rogerplatt.co.uk](mailto:Maidenhead@rogerplatt.co.uk)



25-29 Queen Street, MAIDENHEAD, Berkshire,  
SL6 1NB



[rogerplatt.co.uk](https://rogerplatt.co.uk)