



## James Street

Hounslow, TW3

£415,000

Situated within a short walk of Hounslow town centre and all its amenities, Hounslow East tube station, the green spaces of Inwood Park and a range of local schools, this two double bedroom mid terrace family home is the perfect property for first time buyers or investors.

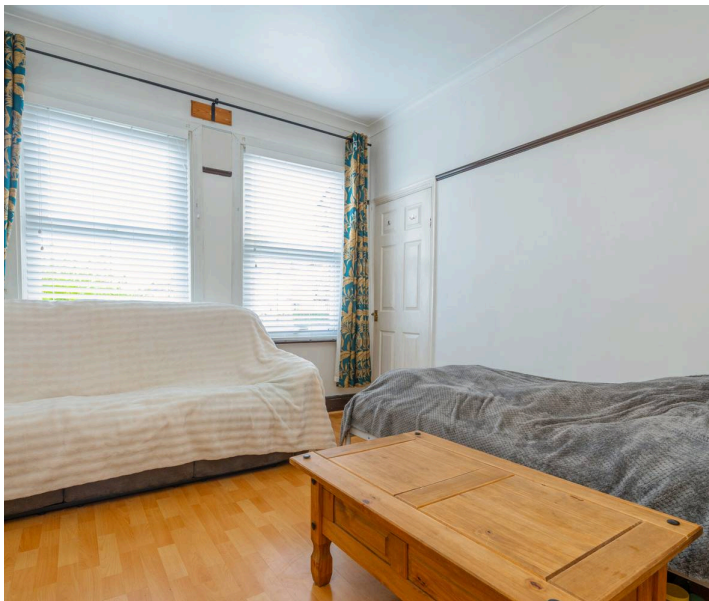
Council Tax band: C

Tenure: Freehold

EPC Energy Efficiency Rating: C

EPC Environmental Impact Rating: D

- Two Double Bedrooms
- Close to Public Transport
- Close to Town Centre
- Victorian Home
- Perfect For First Time Buyers
- Gas Central Heating and Double Glazing

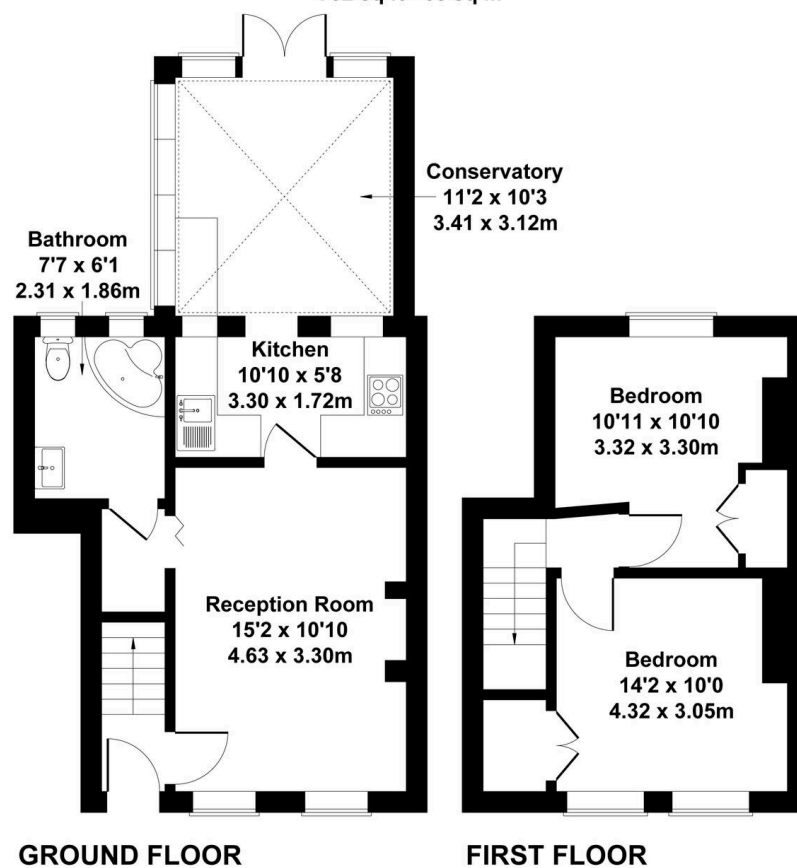


SCAN HERE  
FOR  
PROPERTY  
DETAILS



## James Street, TW3 1SP

Approximate Gross Internal Area  
732 sq ft - 68 sq m



This floorplan is for guidance only and does not form part of an offer or contract.  
Buyers or tenants should verify all details through inspection, searches, and surveys.  
Measurements are approximate and should not be relied upon for valuation or transactions.  
Produced by Plan Portal.  
[www.evovelondon.co.uk](http://www.evovelondon.co.uk)