



Pond Street, NW3

£3,500 Per calendar month

Two double bedroom, two bathroom flat with a roof terrace located on the 4th floor of an apartment building with 24 hour porter. Open plan kitchen reception room, wooden flooring and views towards Hampstead Heath. Parking space.

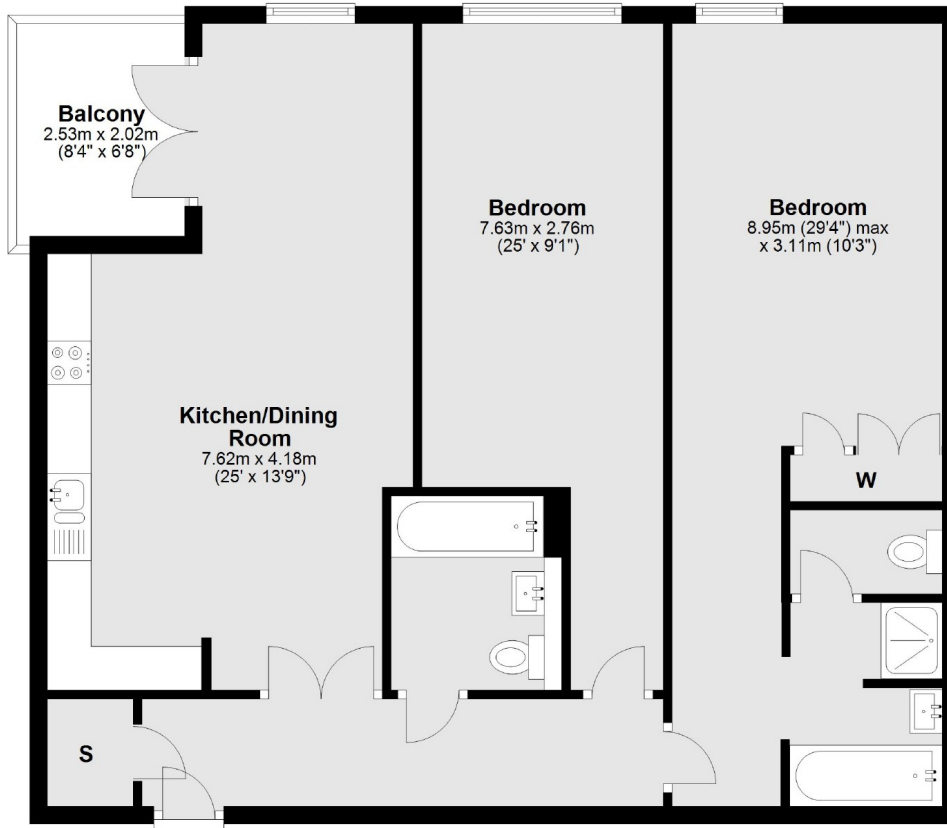
The Panoramic is located close to Hampstead Heath overland station and a short walk from the entrance to Hampstead Heath.

Features

- Two Double Bedrooms
- Two Bathrooms
- Open Plan Kitchen Reception Room
- 4th Floor With Lift
- 24 Hour Porter
- One Parking Space

Pond Street, London, NW3

Fourth Floor



Main area: Approx. 86.9 sq. metres (935.8 sq. feet)
Plus balconies, approx. 5.1 sq. metres (55.0 sq. feet)