

Fulham Road

£695,000

BRIK



Fulham Road

£695,000

Leasehold

2 BED

Flat

0000

SQ FT

0000

SQ M

This spacious second floor apartment extends to over 750 sq ft (69.58 sq m) and offers generous proportions with excellent ceiling heights throughout. At the front of the property is a large reception room, providing an excellent space for both relaxing and entertaining, with ample room for dining. There is also a well-appointed separate kitchen with integrated appliances.

The accommodation further comprises two well-proportioned double bedrooms and a newly refurbished family bathroom. Drive Mansions is a well-maintained and professionally managed private Victorian building. Residents also benefit from access to a large communal garden located at the rear of the building, which is excellently maintained all year round.

Being situated on the Fulham Road it is conveniently located for its numerous surrounding shops, bars, restaurants, and is also just a short walk from Bishop's Park. It also benefits from various transport links with Parsons Green and Putney Bridge underground stations (District Line) being a short distance away, as well as a good range of bus routes including the number 14. EPC rating - C.

- Two double bedrooms
- Modern bathroom
- Integrated kitchen
- Reception room
- Large communal garden
- 2nd floor flat
- Leasehold (974-year lease)
- Excellent location
- Approx 751 sq ft (69.58 sq m)
- Council tax band - E

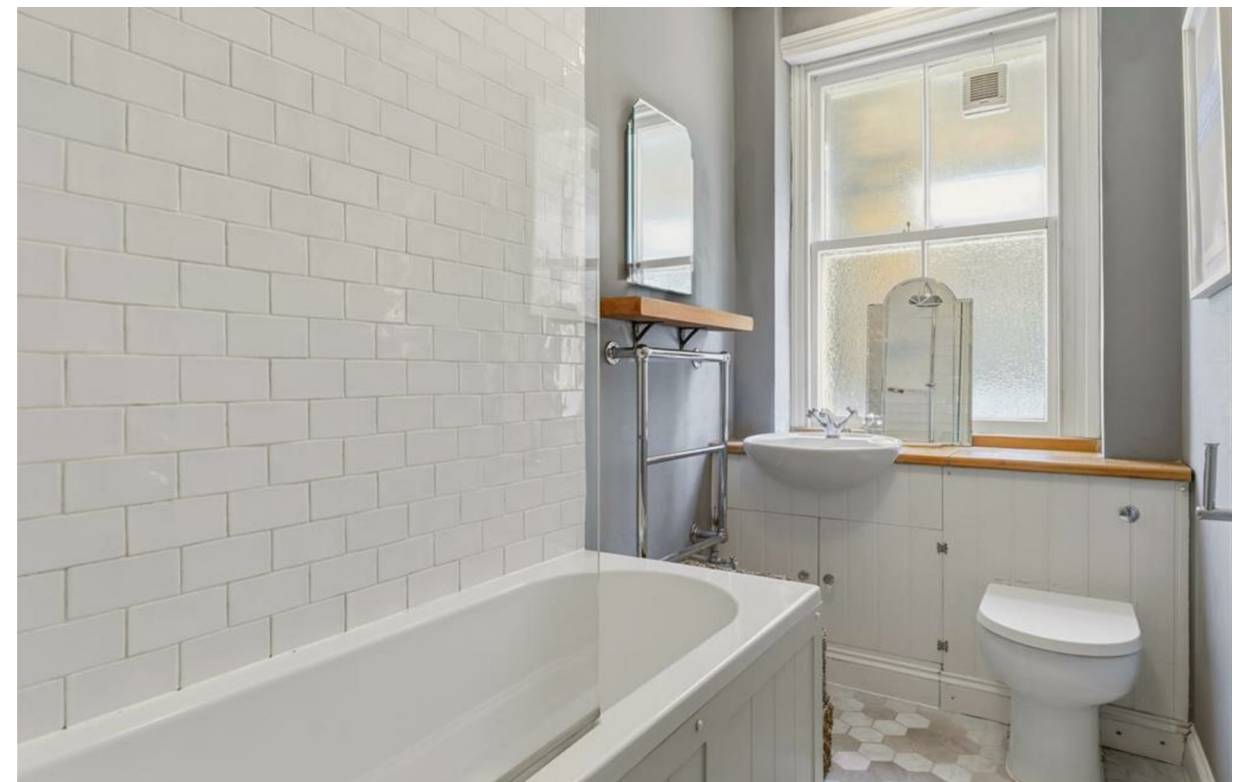
JAMES SIMS

020 7384 6790

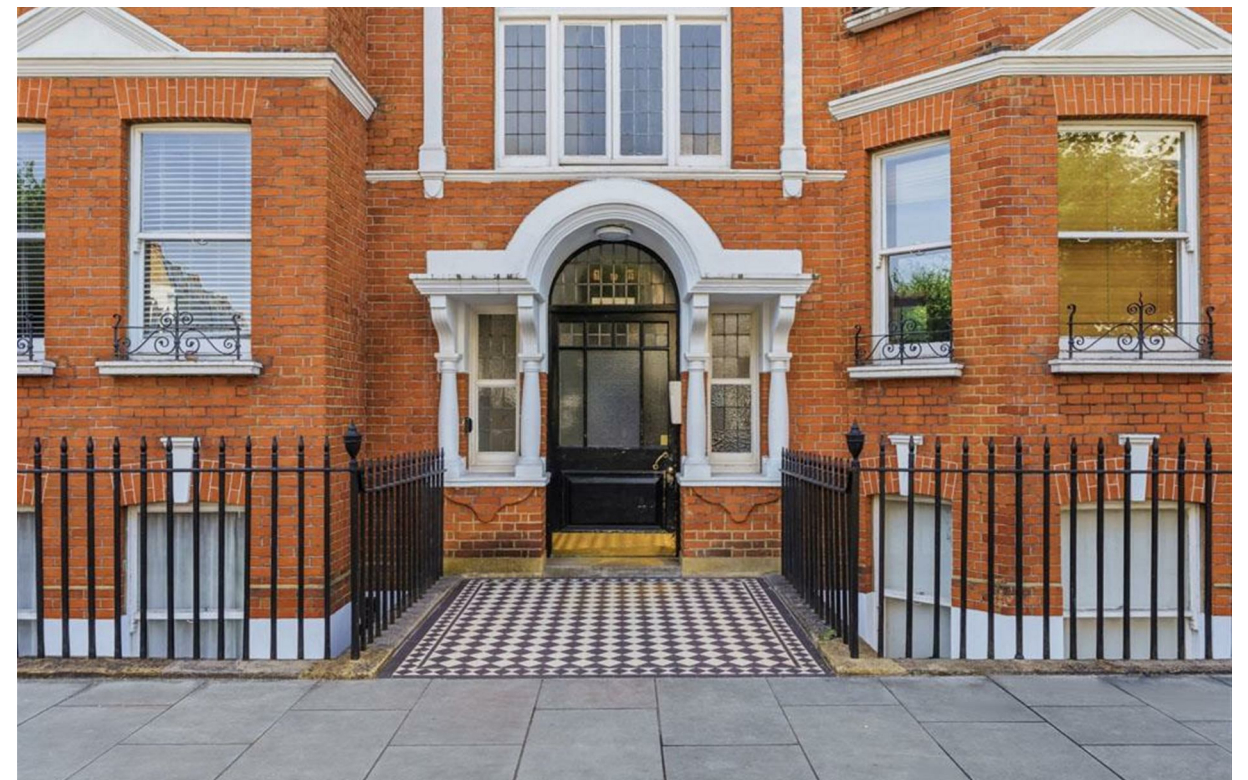
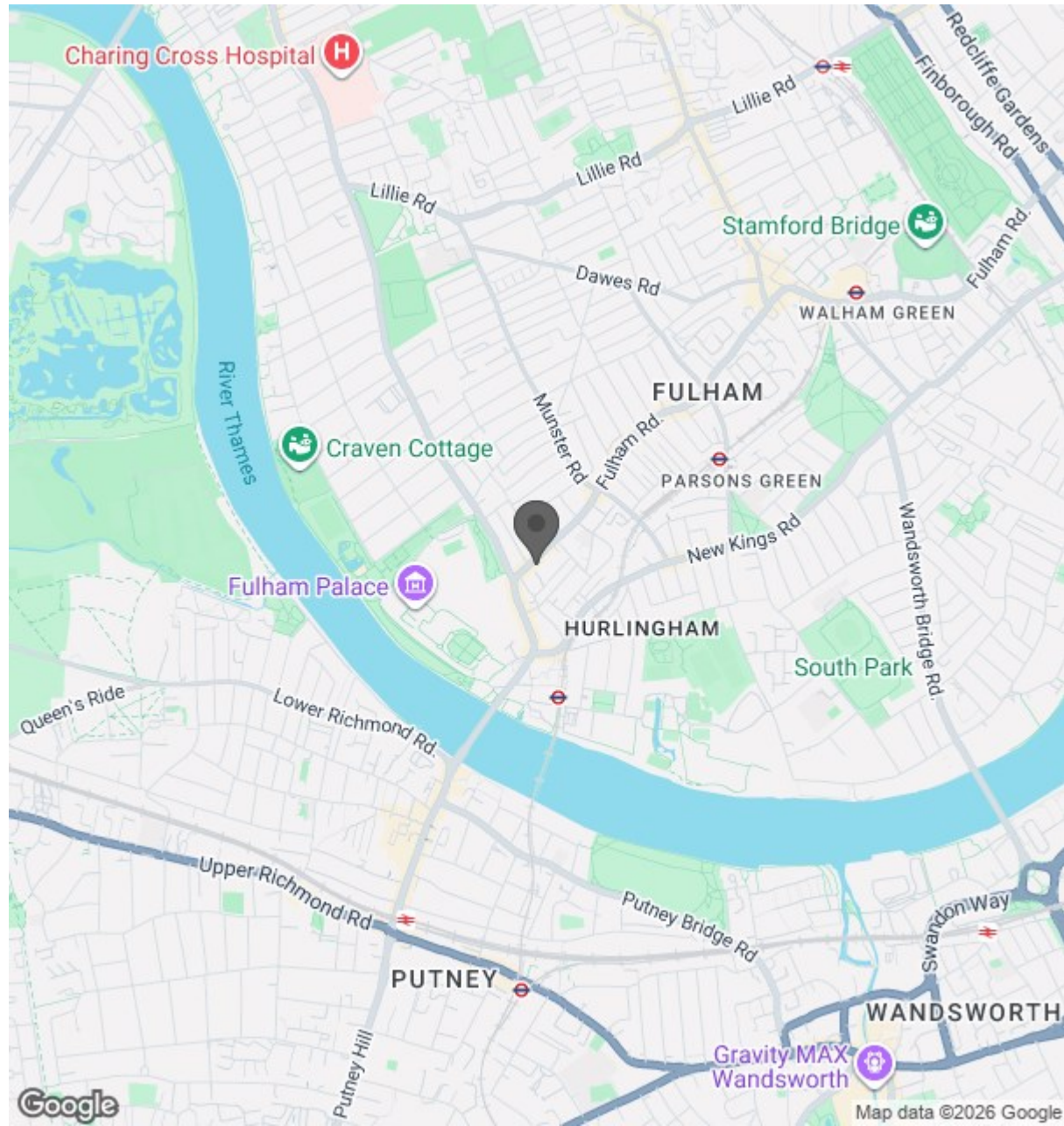
james@brik.co.uk







Location



BRIK

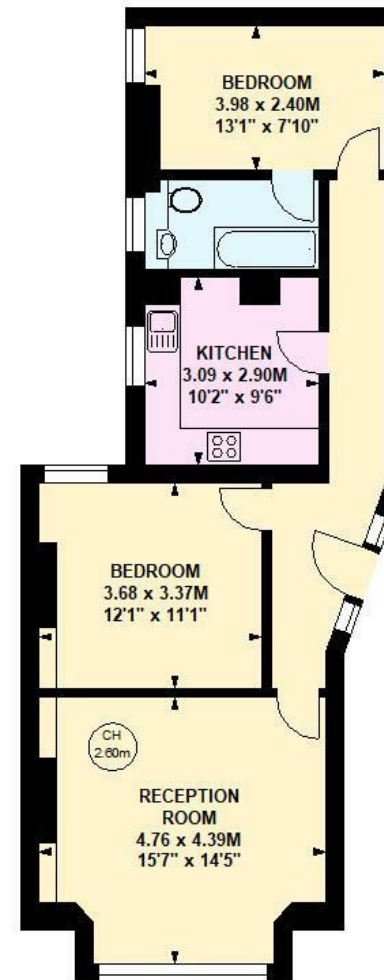
0000
SQ FT

0000
SQ M

Drive Mansions, SW6
Approximate gross internal area
69.78 sq m / 751 sq ft



Key :
CH - Ceiling Height



Second Floor

Although every attempt has been made to ensure accuracy, all measurements are approximate.
This floorplan is for illustrative purposes only and not to scale.
Measured in accordance with RICS standards.

Important notice Brik give notice that: all text, photographs and plans on these brochure are for guidance only and are not necessarily comprehensive; any areas, measurements or distances given are approximate; these details do not constitute part of an offer or contract and must not be relied upon as statements or representations of fact; it should not be assumed that the property has all the necessary planning permissions and building regulations approvals; we are not authorised to give any representations or warranties in relation to this property whatsoever; potential purchasers must satisfy themselves as to the correctness of all details by inspection or otherwise. Brik, 77 Parsons Green Lane, Fulham, London SW6 4JA Tel: 020 7384 6790 Email: hello@brik.co.uk