



[www.jeffreygross.co.uk](http://www.jeffreygross.co.uk)

*Filton Avenue*

CARDIFF

VALE

CAERPHILLY

BRISTOL



Comments by Ms Beth Powles



**Property Specialist**  
Ms Beth Powles  
Tenancy Co-ordinator

[b.powles@thepropertyoutlet.co.uk](mailto:b.powles@thepropertyoutlet.co.uk)

Comments by the Homeowner





# Filton Avenue

, Horfield, BS7 0BE

PCM

£2,200 PCM



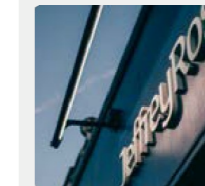
4 Bedroom(s)



1 Bathroom(s)



1151.75 sq ft



Contact our  
**Property Outlet Branch**

0117 935 4565

\* AVAILABLE 15.08.2026\*

Furnished student apartment! This flat will be re-decorated in time for move in!

Jeffrey ross & The property outlet are delighted to offer to the student rental market this well presented four double bedroom property.

This apartment is ideal for sharers and students. The accommodation comprises entrance hall, kitchen/dining room as a communal space and four double bedrooms with a shower room & W/C. White goods include an electric cooker, washing machine and fridge freezer. Benefits also include gas central heating, double glazing and furnishings. This is in a good location with links to UWE & City centre along with local amenities close by.

Holding Deposit £507.69

CARDIFF

VALE

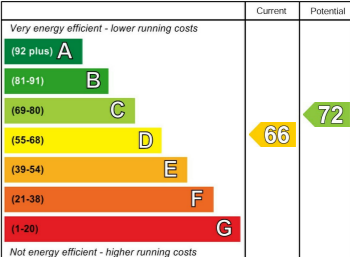
CAERPHILLY

BRISTOL

[www.jeffreygross.co.uk](http://www.jeffreygross.co.uk)



Energy Efficiency Rating



England & Wales EU Directive 2002/91/EC

