



Hewer Close
Eastwood Nottingham

burchell
edwards

Hewer Close Eastwood Nottingham NG16 3NU

for sale
£210,000



Property Description

Situated on a popular residential development offering convenient access to major link roads and the motorway network, this well-presented three-bedroom end town house is ideally suited to families, professionals, and first-time buyers alike. An early viewing is strongly recommended to appreciate the accommodation on offer.

The property briefly comprises a welcoming entrance hall with access to a ground-floor cloakroom/WC, a spacious and well-proportioned lounge, and a modern kitchen/diner fitted with a range of units and enjoying French doors opening directly onto the rear garden—perfect for indoor-outdoor living and entertaining.

To the first floor are three bedrooms, including a principal bedroom benefiting from fitted storage and a private en-suite shower room. A contemporary family bathroom serves the remaining bedrooms.

Externally, the home enjoys an enclosed rear garden providing a secure and private outdoor space, along with a driveway to the front offering off-road parking for two vehicles.

This is an excellent opportunity to acquire a well-maintained home in a sought-after location, combining practical living space with superb transport links.

Hallway

Entered via an external door, the hallway features attractive wood-effect flooring, a wall-mounted radiator, staircase rising to the first floor, and a ceiling light, providing a welcoming introduction to the home.

Cloakroom

Comprising a low-level WC and corner half-pedestal wash hand basin, this convenient cloakroom is finished with wood-effect flooring, a wall-mounted radiator, ceiling light, and an opaque uPVC double-glazed window to the front elevation.

Living Room

A comfortable living space featuring fitted carpet, a uPVC double-glazed window to the front elevation, wall-mounted radiator, useful under-stairs storage cupboard, and ceiling light—ideal for both relaxing and entertaining.

Kitchen / Diner

A modern and well-appointed kitchen/dining area fitted with a comprehensive range of wall and base units with rolled-edge worktops, incorporating a one-and-a-quarter bowl sink and drainer. Appliances include an integrated electric oven, inset gas hob with stainless-steel splashback and extractor hood, integrated fridge, freezer, washing machine, and dishwasher. Finished with wood-effect flooring, wall-mounted radiator, uPVC double-glazed rear window, French doors opening onto the rear garden, ceiling spotlights, and an additional ceiling light.

Landing

The first-floor landing is fitted with carpet and provides access to the loft hatch and airing cupboard, finished with a ceiling light.

Master Bedroom

A well-proportioned principal bedroom featuring fitted carpet, an over-stairs storage cupboard, uPVC double-glazed window to the front elevation, wall-mounted radiator, and ceiling light.

En-Suite

The en-suite comprises a corner shower enclosure with mains-fed mixer bar shower, low-level WC, and pedestal wash hand basin. Finished with wood-effect flooring, wall-mounted radiator, opaque uPVC double-glazed front window, and ceiling light.

Bedroom Two

A further bedroom with fitted carpet, uPVC double-glazed window overlooking the rear garden, wall-mounted radiator, and ceiling light.

Bedroom Three

A versatile third bedroom featuring wood-effect flooring, uPVC double-glazed rear window, wall-mounted radiator, and ceiling light—ideal as a nursery, study, or guest room.

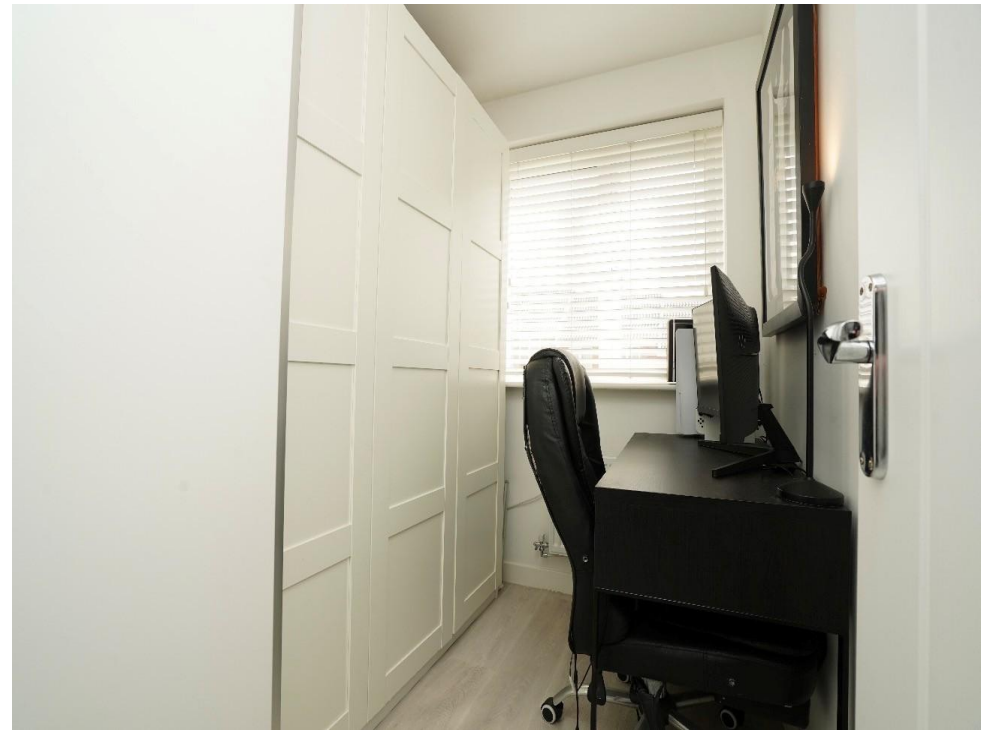
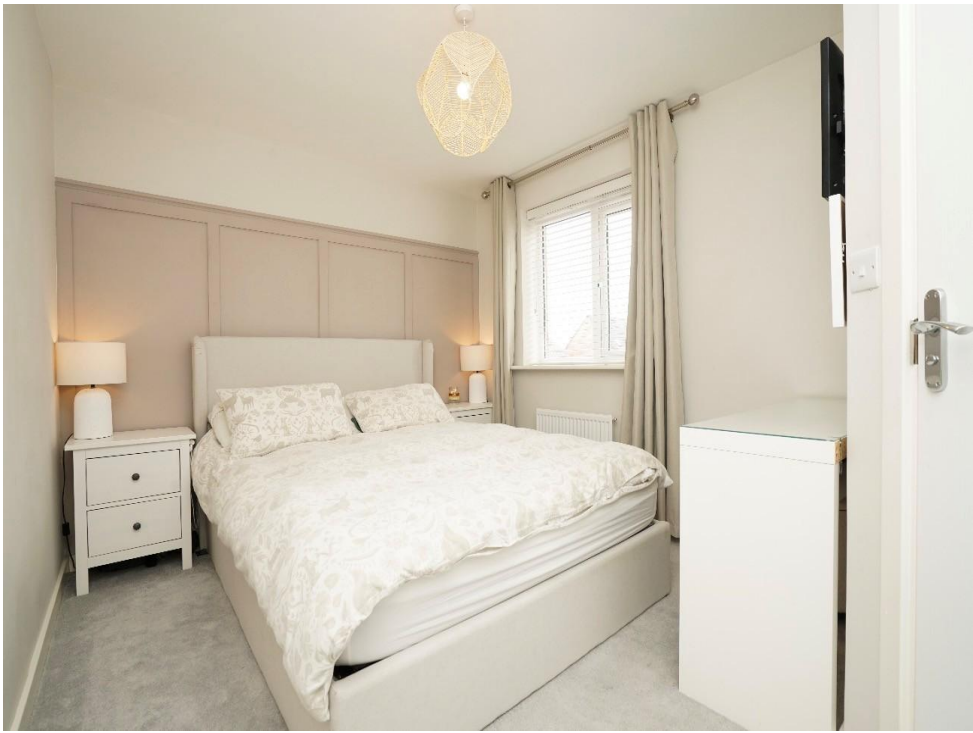
Bathroom

The family bathroom is fitted with a modern suite comprising a panelled bath, low-level WC, and pedestal wash hand basin. The room benefits from wood-effect flooring, wall-mounted radiator, opaque uPVC double-glazed window to the side elevation, and ceiling light.

External

Externally, the property enjoys an enclosed rear garden, principally laid to lawn with a patio seating area, fenced boundaries, and secure gated access. To the front, a driveway provides parking for two vehicles.







To view this property please contact Burchell Edwards on

T 01773 715454
E eastwood@burchelledwards.co.uk

134 Nottingham Road Eastwood
NOTTINGHAM NG16 3GD

EPC Rating: B Council Tax
Band: B

Tenure: Freehold

view this property online [burchelledwards.co.uk/Property/EWD207699](https://www.burchelledwards.co.uk/Property/EWD207699)



1. MONEY LAUNDERING REGULATIONS Intending purchasers will be asked to produce identification documentation at a later stage and we would ask for your co-operation in order that there will be no delay in agreeing the sale. 2. These particulars do not constitute part or all of an offer or contract. 3. The measurements indicated are supplied for guidance only and as such must be considered incorrect. Potential buyers are advised to recheck measurements before committing to any expense. 4. We have not tested any apparatus, equipment, fixtures, fittings or services and it is in the buyers interest to check the working condition of any appliances.

Burchell Edwards is a trading name of Connells Residential which is registered in England and Wales under company number 1489613, Registered Office is Cumbria House, 16-20 Hockliffe Street, Leighton Buzzard, Bedfordshire, LU7 1GN. VAT Registration Number is 500 2481 05.

See all our properties at www.burchelledwards.co.uk | www.rightmove.co.uk | www.zoopla.co.uk

Property Ref: EWD207699 - 0004