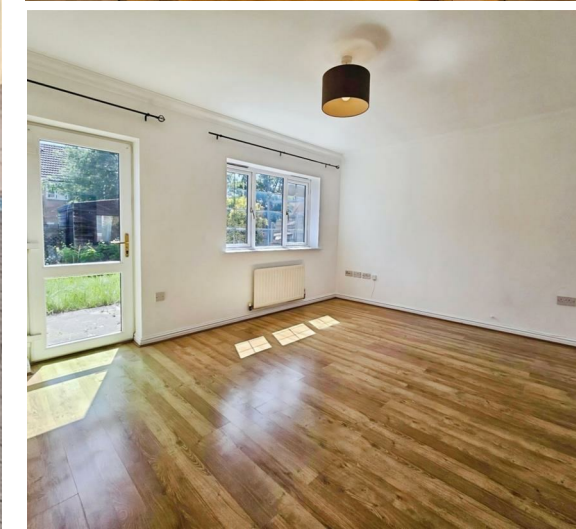


Jupiter Lane, , Kingsnorth, TN23 3RL
Asking price: Offers In The Region Of £280,000



HUNTERS[®]
HERE TO GET *you* THERE

DESCRIPTION

A 2 bedroom, mid-terrace house sold with no onward chain - offers a delightful opportunity for first-time buyers and savvy investors alike. Built in approx 2004, which features two spacious double bedrooms, a neat and tidy garden plus allocated parking - making it an ideal choice for those seeking comfort and convenience.

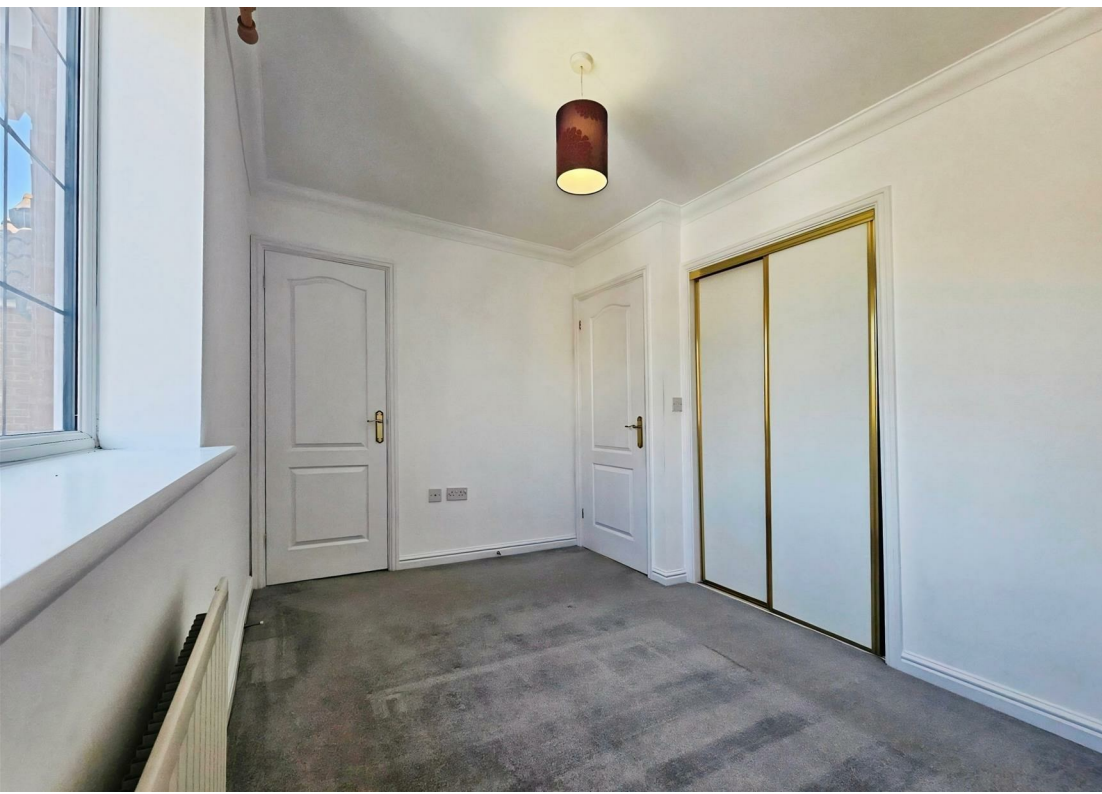
Upon entering, you are greeted by a welcoming kitchen at the front of the home, complete with a window that allows natural light to flood the space. The ground floor also boasts a generous lounge/diner at the rear, which opens through doors into a lovely rear garden, perfect for enjoying the outdoors or entertaining guests.

The first floor comprises two well-proportioned bedrooms, one of which benefits from built-in storage, while the other offers a pleasant view of the garden. Completing the accommodation is a family bathroom suite, equipped with a shower over the bath, a wash hand basin, and a W/C, ensuring all your needs are met.

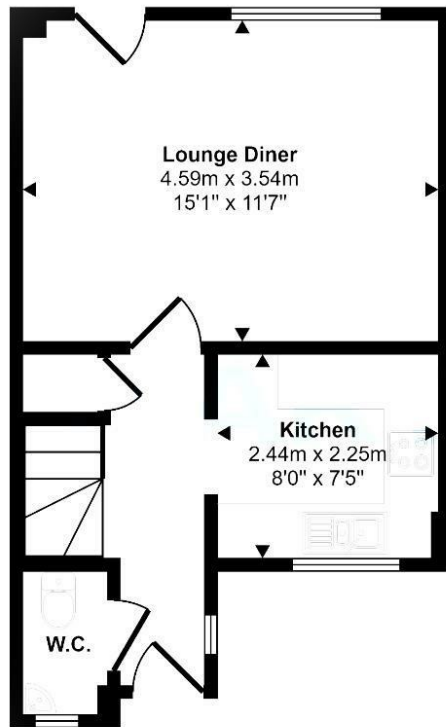
Situated within the desirable Chartfields development, this property is conveniently located just a five-minute drive from Ashford Town Centre and the Ashford International Railway Station, providing excellent transport links for commuters.

With a previous rental history of approximately £1,050 per month, this home presents a fantastic investment opportunity. Whether you are looking to step onto the property ladder or expand your investment portfolio, this charming residence is certainly worth considering.

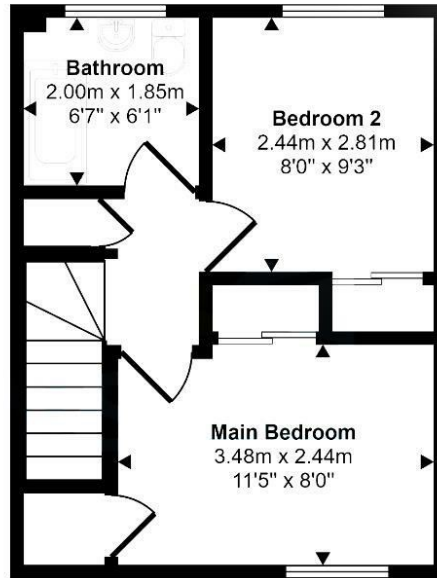
- A well appointed, 2 bedroom mid terrace home - no onward chain
- Off road parking in front of the home
- Enclosed, private rear garden with rear access
- Kitchen to front of home with window overlooking frontage
- EPC Rating: C (74) - Council Tax Band: C
- Located in the well regarded Kingsnorth area of Ashford
- Offering 2 well proportioned double bedrooms
- Generous lounge/diner to rear of home with garden access
- Family bathroom servicing both bedrooms upstairs
- Situated within Chartfields, Ashford



Approx Gross Internal Area
58 sq m / 623 sq ft



Ground Floor
Approx 30 sq m / 326 sq ft



First Floor
Approx 28 sq m / 297 sq ft

This floorplan is only for illustrative purposes and is not to scale. Measurements of rooms, doors, windows, and any items are approximate and no responsibility is taken for any error, omission or mis-statement. Icons of items such as bathroom suites are representations only and may not look like the real items. Made with Made Snappy 360.

Viewings

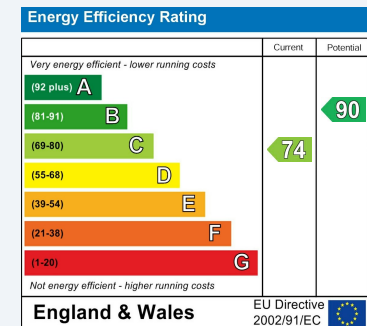
Please contact ashford@hunters.com, if you wish to arrange a viewing appointment for this property or require further information.

Valuations

For a valuation of your property, please email the team with your property details, contact information and the times you are available.

ENERGY PERFORMANCE CERTIFICATE

The energy efficiency rating is a measure of the overall efficacy of a home. The higher the rating the more energy efficient the home is and the lower the fuel bills will be.



These particulars are intended to give a fair and reliable description of the property but no responsibility for any inaccuracy or error can be accepted and do not constitute an offer or contract. We have not tested any services or appliances (including central heating if fitted) referred to in these particulars and the purchasers are advised to satisfy themselves as to the working order and condition. If a property is unoccupied at any time there may be reconnection charges for any switched off/disconnected or drained services or appliances - All measurements are approximate.

THINKING OF SELLING? If you are thinking of selling your home or just curious to discover the value of your property, Hunters would be pleased to provide free, no obligation sales and marketing advice. Even if your home is outside the area covered by our local offices we can arrange a Market Appraisal through our national network of Hunters estate agents.