



Jack Taggart & Co

RESIDENTIAL SALES AND LETTINGS



£230,000

Clarence Square

Brighton, BN1 2ED

PROPERTY SUMMARY

Nestled within the historic and highly sought-after Clarence Square, this beautifully appointed one-bedroom maisonette offers a rare opportunity to own a spacious and stylish home in the very heart of Brighton. Spread over the ground and lower ground floors of an attractive period building, the property blends timeless charm with modern convenience, creating an ideal home for first-time buyers, city professionals, or investors seeking a central and desirable location.

From the moment you step through the front door, the sense of space and comfort is immediately apparent. The bright and generously proportioned living and dining area on the ground floor forms the heart of the home. This welcoming space is bathed in natural light thanks to a large south-facing sash window, fitted with modern wooden shutters that provide both privacy and aesthetic appeal. With high ceilings and tasteful decor, the room offers an elegant and versatile setting for everyday living, entertaining, or relaxing after a day in the city.

Flowing seamlessly from the living area is the modern, well-designed kitchen. Thoughtfully laid out, it features sleek white cabinetry with soft-close fittings, solid wood countertops that add warmth and texture, and plenty of space for a breakfast table-perfect for morning coffee or casual meals. There is ample storage, quality fittings, and integrated appliances, making this kitchen both practical and stylish.

Also on the ground floor is a beautifully finished bathroom. Fully tiled in contemporary tones, it features a full-sized soaking tub with a shower overhead, modern fixtures, and clever storage solutions-offering a serene space to unwind.

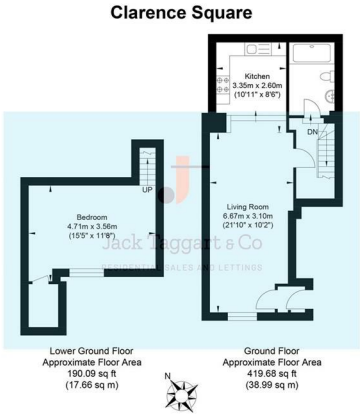
1



1



1





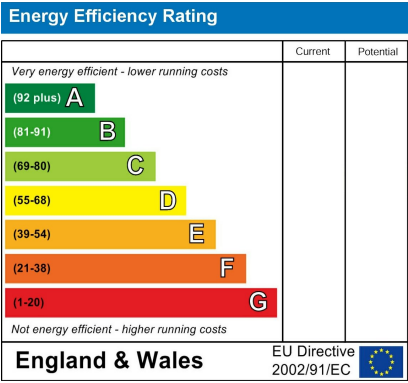
Approximate Gross Internal Area = 56.65 sq m / 609.77 sq ft
Illustration for identification purposes only, measurements are approximate, not to scale.

1

1

1



Agents Note: Whilst every care has been taken to prepare these particulars, they are for guidance purposes only. All measurements are approximate and are for general guidance purposes only and whilst every care has been taken to ensure their accuracy, they should not be relied upon and potential buyers/tenants are advised to recheck the measurements