



Coram Street, WC1N

£3,700 Per calendar month

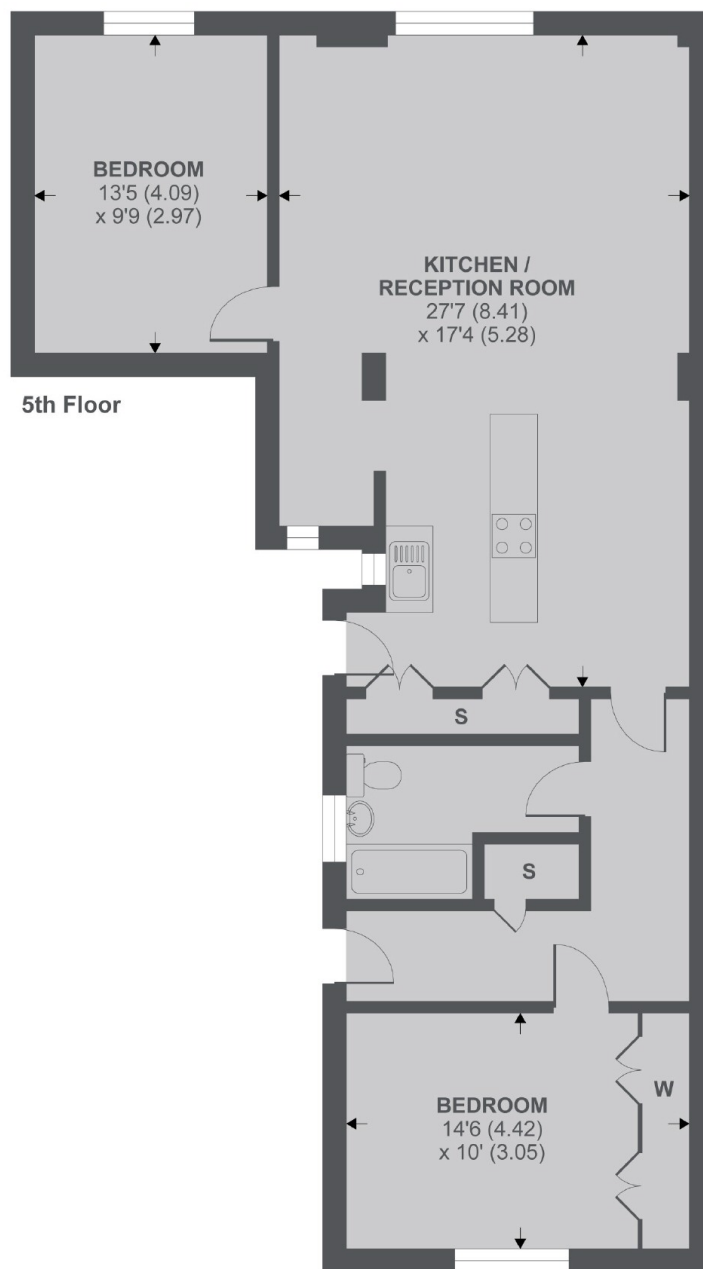
An exceptionally spacious two bedroom apartment on the fifth floor of a centrally located Portered building in Bloomsbury. The apartment two double bedrooms, A large open plan reception with island kitchen, and contemporary family bathroom.

Witley Court is a ported building located just 400 ft from the Brunswick Centre which offers a wide range of shops, restaurants and amenities. It is also convenient for for many of the local Universities and stations including Euston and Kings Cross.

Features

- Fifth Floor (With Lift)
- Two Double Bedrooms
- Open Plan Living
- Dining Space
- Portered Building
- Secure Entrance

Coram Street, London, WC1N



Coram Street WC1N

APPROX FLOOR AREA 939 SQ.FT 87.2 SQ.M

Copyright nichecom.co.uk 2018 REF : 325615

Dexters

Bloomsbury
55-56 Coram Street
London
WC1N 1HB
Lettings
020 7833 4488

Energy Rating: D. We aim to make our particulars both accurate and reliable. However they are not guaranteed; nor do they form part of an offer or contract. If you require clarification on any points then please contact us, especially if you're traveling some distance to view. Please note that appliances and heating systems have not been tested and therefore no warranties can be given as to their good working order.

 **RICS** | Regulated
Estate Agent
and Letting Agent

dexters.co.uk