



Sir Henry Jake Close, Banbury, OX16 1EY

Property Description

*** DEPOSIT ALTERNATIVE AVAILABLE

*** Recently redecorated and newly carpeted throughout, this attractive two-bedroom coach house offers a fresh and welcoming home in the sought-after Hanwell Fields area of Banbury. Benefiting from its own private entrance, stairs lead up to the spacious first-floor accommodation, positioned above three garages. The property features a well-equipped kitchen complete with an oven, hob, washing machine and fridge freezer. The bright and airy living/dining room is enhanced by a charming feature fireplace, creating a homely space to relax and entertain. There are two well-proportioned bedrooms, both served by a bathroom. Externally, the property enjoys a private rear garden with a lawn and decked seating area, ideal for outdoor dining and relaxation. Further benefits include a single garage and driveway parking for one vehicle. Offered unfurnished and available immediately. Council Tax Band B. Energy Rating C.





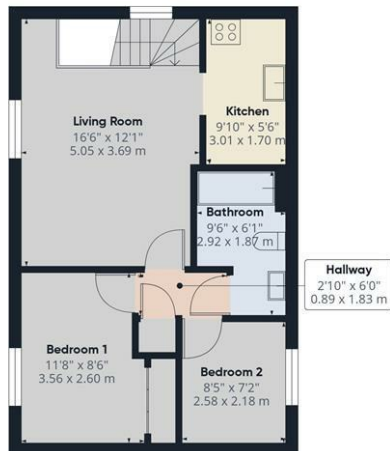
Key Features

- *** DEPOSIT ALTERNATIVE AVAILABLE ***
- Banbury
- 2 Bedrooms
- Coach House Apartment
- Unfurnished
- Rear Garden
- Garage & Driveway Parking
- Council Tax Band B
- Energy Rating C
- Available Now



Approximate total area⁽¹⁾
666 ft²
61.8 m²

Ground Floor



Floor 1

(1) Excluding balconies and terraces

Calculations reference the RICS IPMS 3C standard. Measurements are approximate and not to scale. This floor plan is intended for illustration only.

GIRAFFE360



£1,100 PCM