



West Hill, SW15

£480,000

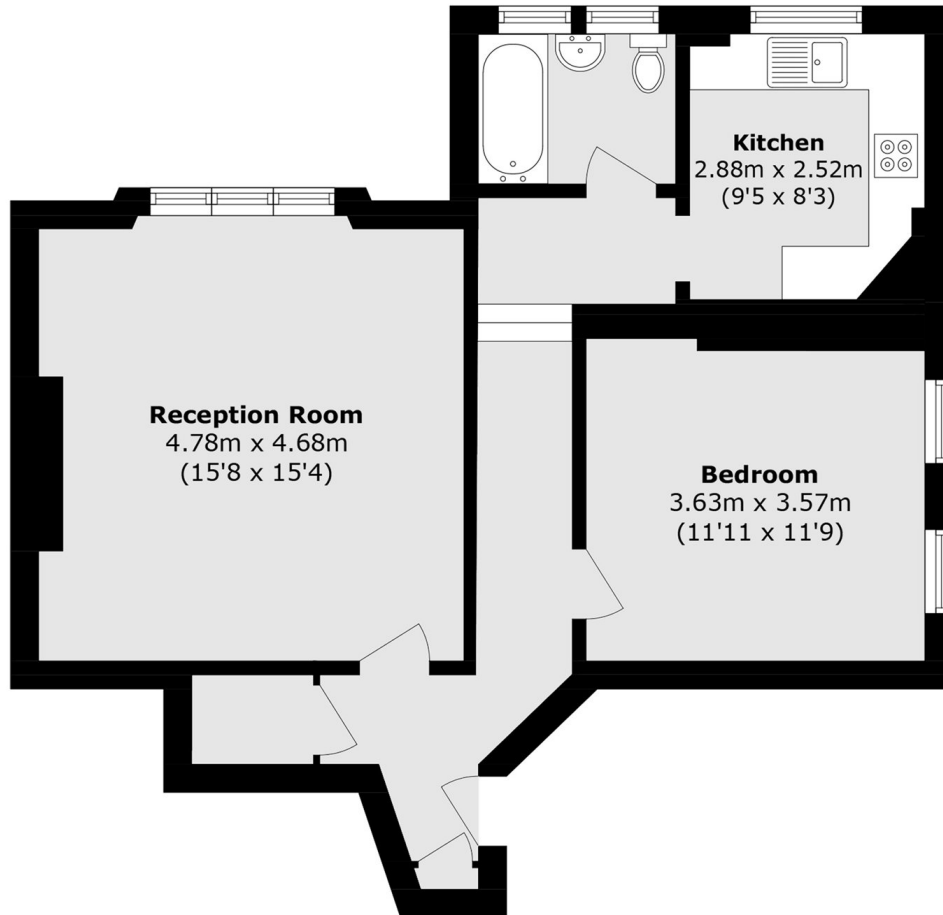
Set within an attractive period conversion on West Hill, this bright and well-proportioned one-bedroom flat offers nearly 650 sq ft of internal space. The property features a generous, light, and airy reception room with very high ceilings, large sash windows, and a statement fireplace. A separate, fully renovated modern kitchen with integrated appliances overlooks a shared garden within a leafy conservation area. The double bedroom is quietly positioned with ample natural light and is complemented by a well-appointed bathroom.

Located in the heart of Putney, the property is ideally placed for the green open spaces of Putney Heath and Wandsworth Park. A short walk away are the cafés, restaurants and shops along Putney High Street and the River Thames. Excellent transport links are close by, including Putney railway station for direct services into Waterloo and East Putney Underground Station providing easy access across the city

Features

- Chain Free
- One Bedroom
- One Bathroom
- Share of Freehold
- 650 sq. ft
- Period

West Hill, London, SW15



Total area (approx.): 59.9 sq. m (640.4 sq. ft)