



56 Diamond Way, Blandford Forum, Dorset, DT11 7WD





**A modern 3 bedroom end of terraced house with parking situated in this popular development on the outskirts of the town centre.**

The entrance hall has stairs extending to first floor. There is a useful downstairs cloakroom comprising a low level WC and wash hand basin.

The modern kitchen has a range of grey fronted base and wall units providing cupboard and drawer storage complimented by work-surfaces with matching upstand. Integral appliances include electric fan assisted oven with 4 ring gas hob and cooker hood above. AEG fridge/freezer & dishwasher. In addition there is plumbing for washing machine.

The sitting/dining room overlooks the rear garden with French doors to same and benefits from a spacious under-stairs cupboard.

The first floor landing houses the airing cupboard and 3 bedrooms, the master bedroom having 2 sets of built-in wardrobes and an en-suite shower room comprising oversized shower, WC and wash hand basin.



The family bathroom comprises a panelled bath with mixer tap, WC, pedestal wash hand basin with tiled splashbacks.

Outside is a Fully enclosed rear garden is bounded by fencing with patio area adjacent to the rear of the property, a paved path leads to a timber shed. personal gate to rear and side.

2 allocated parking spaces which are located in a parking to the side of the property.

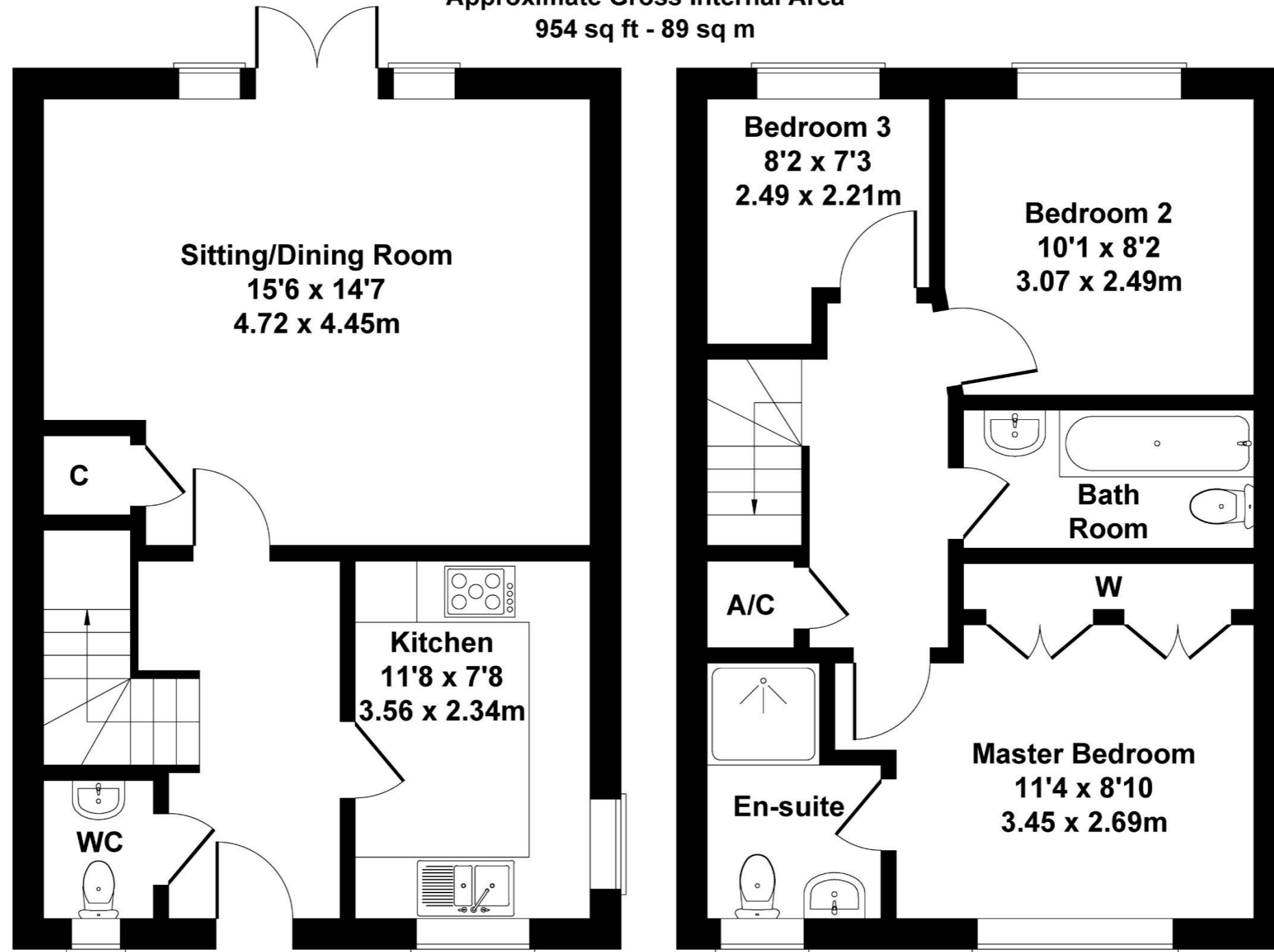
Please note there is a Management fee of £390pa.



£290,000 Freehold

# 56 Diamond Way

Approximate Gross Internal Area  
954 sq ft - 89 sq m



**GROUND FLOOR**

**FIRST FLOOR**

Not to Scale. Produced by The Plan Portal 2026  
For Illustrative Purposes Only.

Please note Forum Sales & Lettings and their client give notice that:

1. They have no authority to make or give any representation or warranties in relations to the property. These particulars do not form part of any offer or contract and must not be relied upon as statements or representations of fact.

2. Any areas, common measurements or distances are approximate. The text, photographs and plans are for guidance only and are not necessarily comprehensive. It should not be assumed that the property has all necessary Planning, Building Regulations or other consents and Forum Sales and Lettings have not tested any services, equipment or facilities. Purchasers must satisfy themselves by inspection or otherwise.

EPC Rating - C

Viewing Arrangements - Strictly by appointment with Forum Sales & Lettings

15 Salisbury Street, Blandford Forum, Dorset, DT11 7AU

Tel: 01258 459600