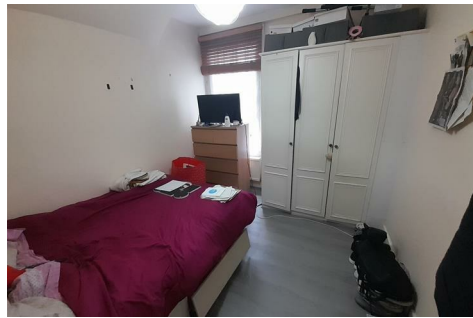


L·D·B

SALES, LETTINGS
& MANAGEMENT



LOCHALINE STREET, HAMMERSMITH, LONDON

LDB IS PROUD TO PRESENT THIS BRIGHT, SPACIOUS AND WELL-LOCATED TWO-BEDROOM FLAT ON LOCHALINE STREET.

LOCATED NEARBY CHARING CROSS HOSPITAL, THIS FLAT FEATURES TWO SPACIOUS DOUBLE BEDROOMS, PLENTY OF STORAGE AND A SHARED REAR GARDEN.

LOCHALINE STREET BOASTS PLENTY OF FEATURES FOR ANY TENANT. IT'S A PICTURESQUE TREE-LINED STREET WITH QUICK ACCESS TO THE RIVER, AS WELL AS BEING JUST MOMENTS AWAY FROM HAMMERSMITH BROADWAY. THERE IS A WHOLE HOST OF SHOPS, RESTAURANTS, PUBS AND, OF COURSE, FOUR DIFFERENT UNDERGROUND LINES TO CHOOSE FROM, GETTING YOU ANYWHERE YOU WANT ACROSS LONDON.

MAKE SURE TO CALL LDB NOW TO AVOID MISSING OUT.

£2,400 PCM

- GREAT LOCATION
- SHARED REAR GARDEN
- TWO SPACIOUS BEDROOMS
- CLOSE TO TRANSPORT LINKS

