



165 Maidenhead Road, Windsor, SL4 5EZ
£725,000

 **HORLER**

165 Maidenhead Road, Windsor, SL4 5EZ

In the highly desirable Maidenhead Road in Windsor, this splendid semi-detached family home presents an exceptional opportunity for those seeking both comfort and convenience. With four generously sized bedrooms, including a ground floor bedroom complete with an ensuite, this property is designed to accommodate the needs of modern family living.



Property Summary

The heart of the home features a long galley kitchen, perfect for culinary enthusiasts, alongside a separate dining room that invites family gatherings and entertaining. The light and airy living room provides a welcoming space to relax and unwind, ensuring that every corner of this home is both functional and inviting.

Outside, the property boasts a minimalist garden, ideal for those who prefer low-maintenance outdoor spaces. Additionally, off-street parking is available for up to three vehicles, a rare find in such a sought-after location. The garden backs onto allotments, offering a peaceful backdrop and a sense of privacy.

Conveniently situated within walking distance to a variety of local amenities, this home is also close to some of the area's finest schools and excellent transport links, making it an ideal choice for families and commuters alike. This property truly embodies the perfect blend of space, style, and location, making it a must-see for anyone looking to settle in Windsor.

General Information:

Tenure: Freehold

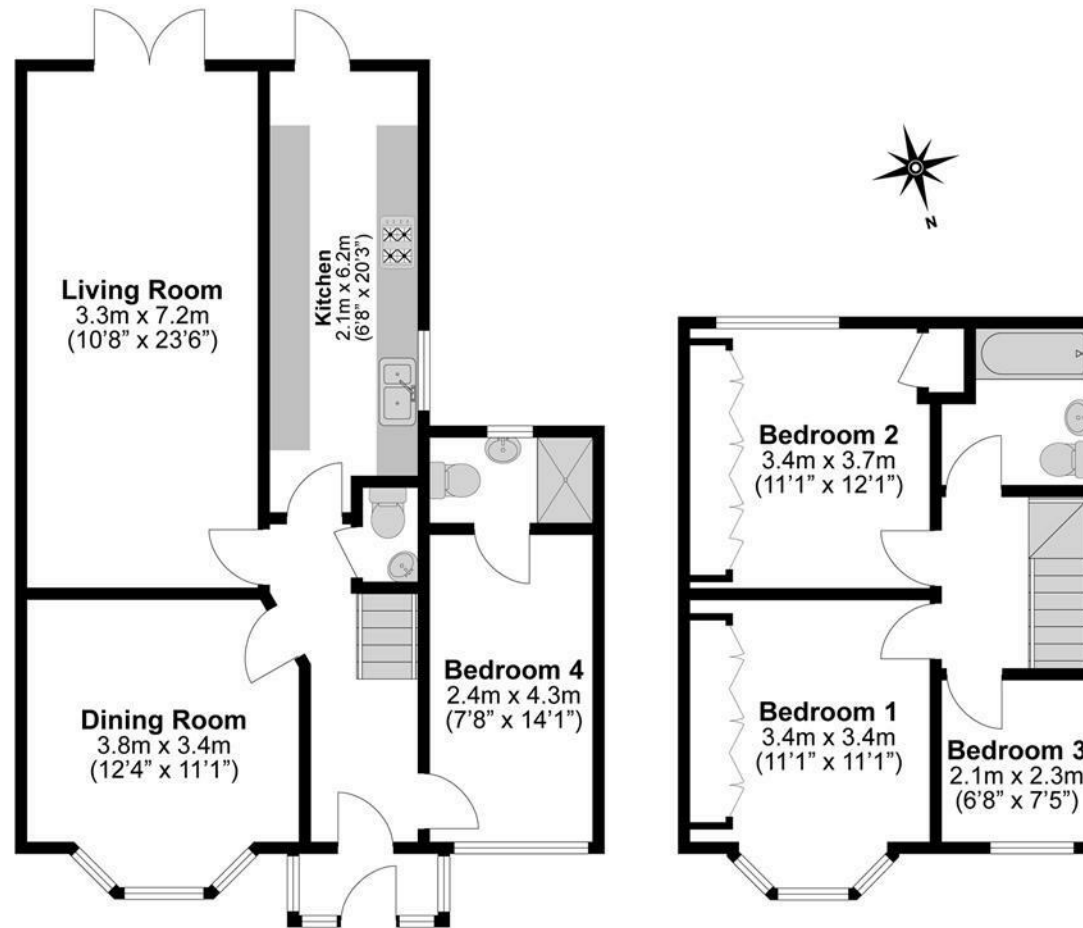
Council Tax Banding: E

Legal Note:

Although these details are thought to be materially correct their accuracy cannot be guaranteed and they do not form part of any contract.







**Illustrations are for identification purposes only,
measurements are approximate, not to scale.**