

140 Benedict Street | Glastonbury | BA6 9EZ

FREEHOLD

£375,000

## PROPERTY SUMMARY



This delightful, charming terraced house on Benedict Street offers a perfect blend of period features and modern living in the charming town of Glastonbury with a separate self contained one bedroom studio with own entrance. The property boasts a living room, kitchen/diner, downstairs cloakroom, three bedrooms and a bathroom. Outside there is a enclosed rear garden.

One of the standout features of this property is the annexe located in the garden, currently utilised as an airbnb. This versatile space could serve as a guest suite, home office, or creative studio, offering endless possibilities to suit your lifestyle.

The combination of period charm and practical amenities makes this house a wonderful opportunity for anyone looking to settle in Glastonbury.

### Entrance Hall

Internal glazed entrance door to hallway.

### Hallway

Stairs to first floor. Radiator. Internal glazed window. Door to living room.

### Living Room

25'0 x 11'0 (7.62m x 3.35m)

Radiator. Multi fuel burner with timber mantle and stone hearth. Wooden flooring. Under stairs storage cupboard. UPVC double glazed bay window to front. Window to kitchen. Door leading into kitchen/diner.

### Kitchen/Diner

19'3 x 12'8 (5.87m x 3.86m)

Wood effect flooring. A range of wall, drawer and base units with work surfaces over. Inset sink with drainer and mixer tap over. Double electric oven with gas hob and cooker hood over. Space for an upright fridge/freezer. Integrated dishwasher. Radiator. Dining area. Spotlights. Velux window. UPVC double glazed sliding doors to rear patio. Door to cloakroom.

### Cloakroom

Low level WC, wash hand basin. Tiling to splash prone areas. Radiator. Spotlights. Wall mounted boiler. Extractor fan. Double glazed window to rear.

### First Floor Landing

Doors to bedroom two, three and bathroom. Door to stairs rising to second floor.

### Bedroom Two

14'3 x 12'4 (4.34m x 3.76m)

Original cast iron feature fireplace. Two double glazed windows to front, views towards Wearyall Hill.



Terraced House

Living Room

Kitchen/Diner

Cloakroom

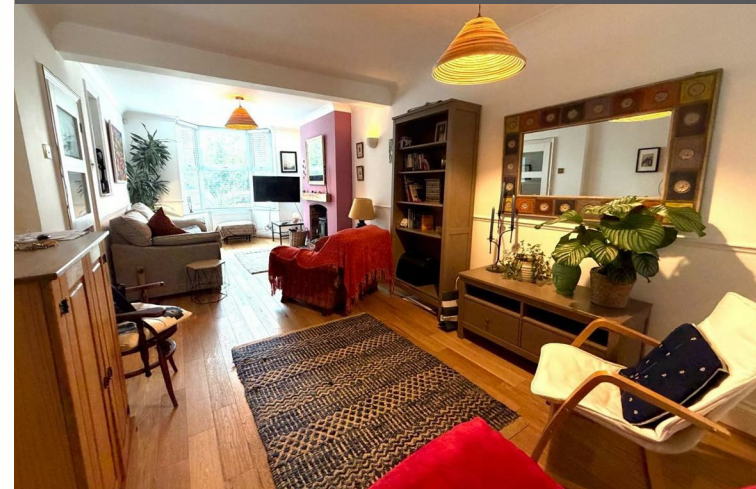
Bathroom

Three Bedrooms

Rear Garden

Successful Airbnb Annexe With Its Own Entrance

Walking Distance To The High Street



**INTERESTED IN THIS  
PROPERTY**

**Need to sell first?**

Please call us on

**01458 888 020**

to arrange

**A FREE**

**MARKET APPRAISAL**

**MORTGAGE ADVICE**

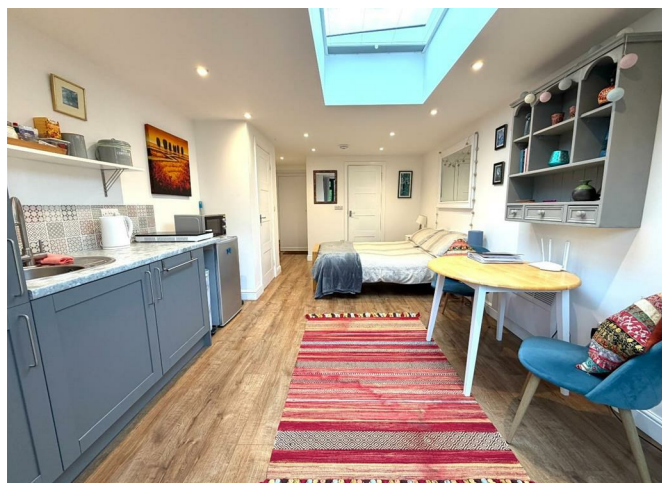
Would you like to have advice from a fully qualified Mortgage Consultant with access to the whole of the market for mortgages?

Tor Finance will assess your needs and recommend the most suitable Mortgage product available to you.

Tor Finance can assess your needs via a free initial consultation and recommend the most suitable Mortgage product available to you.

Please call us on  
**01458 888 020 ext 3**  
to arrange  
**A FREE INITIAL  
CONSULTATION**

Your property may be repossessed if you do not keep up repayments on your mortgage



**Bedroom Three**

13'2 x 7'11 (4.01m x 2.41m)

Original cast iron feature fireplace. Radiator. Double glazed window to rear.

**Bathroom**

7'7 x 9'7 (2.31m x 2.92m)

Three piece white suite, low level WC, pedestal wash hand basin and panelled bath. Double walk in shower. Tiling to splash prone areas. Wall mounted towel rail. Radiator. Extractor fan. UPVC double glazed window to rear.

**Stairs To Second Floor**

**Bedroom One**

15'0 x 13'0 (4.57m x 3.96m)

Eaves storage. Recessed spotlights. Radiator. Double glazed dormer window to rear. Double glazed Velux window to front.

**Rear Garden**

Patio and entertaining area. Paved steps and pathway leading to the rear garden, further area laid to lawn. Variety of borders with mature shrubs and plants.

**Annex**

18'9 x 11'9 (5.72m x 3.58m)

Currently used as an successful airbnb accommodation with its own entrance from the back lane.

**Open Plan Kitchen/Living And Dining**

A range of base and wall units with laminate work surface over. Stainless steel sink with drainer and mixer tap over. Tiling to splash prone areas. Storage cupboard. Velux window. Door leading to shower room.

**Annex Shower Room**

8'1 x 2'10 (2.46m x 0.86m)

Low level WC, wall mounted wash hand basin with storage under. Walk in shower. Tiling to splash prone areas. Extractor fan. Spotlights.

## Front Of Property

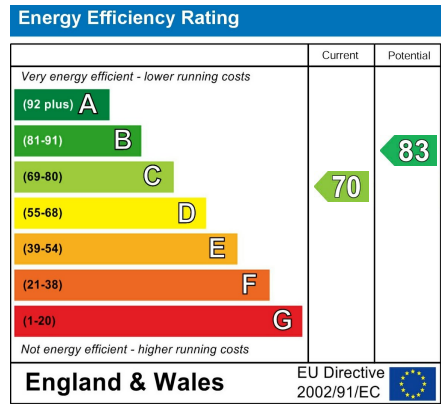
The property is accessed via a concrete pathway leading to the covered main entrance. Area laid to slate enclosed with low level brick walling.

## Disclaimer

Important Notice: Tor Estates, its clients and any joint agents give notice that 1: They are not authorised to make or give any representations or warranties in relation to the property either here or elsewhere, either on their own behalf or on behalf of their client or otherwise. They assume no responsibility for any statement that may be made in these particulars. These particulars do not form part of any offer or contract and must not be relied upon as statements or representations of fact. 2: Any areas, measurements or distances are approximate. The text, photographs and plans are for guidance only and are not necessarily comprehensive. It should not be assumed that the property has all necessary planning, building regulation or other consents and Tor Estates have not tested any services, equipment or facilities. Purchasers must satisfy themselves by inspection or otherwise.



Whilst every attempt has been made to ensure the accuracy of the floorplan contained here, measurements of doors, windows, rooms and any other items are approximate and no responsibility is taken for any error, omission or mis-statement. This plan is for illustrative purposes only and should be used as such by any prospective purchaser. The services, systems and appliances shown have not been tested and no guarantee as to their operability or efficiency can be given.  
Made with Metropix ©2020



## LETTINGS

Call us today for more information

- Vacant Management
- Tenant Find
- Full Management
- Refurbishment Management
- Block Management
- Commercial Lets

01458 888020

20 High Street  
Glastonbury  
BA6 9DU

73 High Street  
Street  
BA16 0EG

[www.torestates.co.uk](http://www.torestates.co.uk)

[info@torestates.co.uk](mailto:info@torestates.co.uk)  
[lettings@torestates.co.uk](mailto:lettings@torestates.co.uk)  
[mortgages@torestates.co.uk](mailto:mortgages@torestates.co.uk)

