

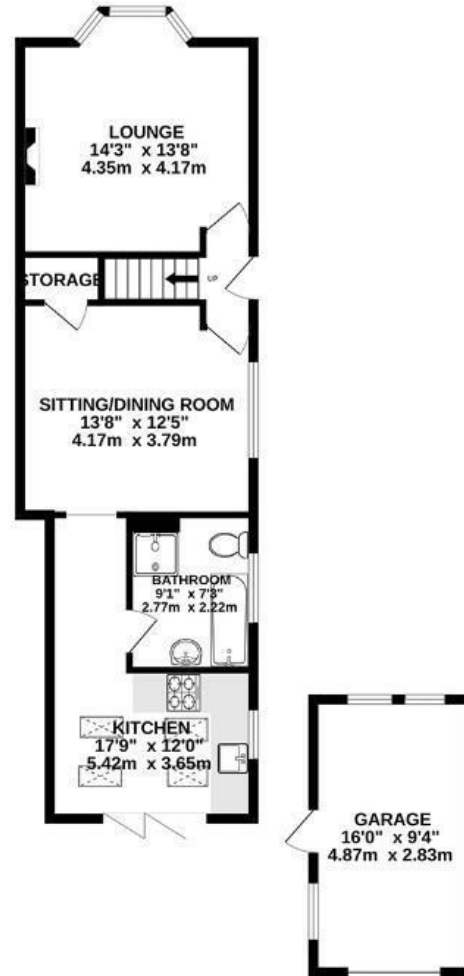
# Grove Park Terrace

## FISHPONDS

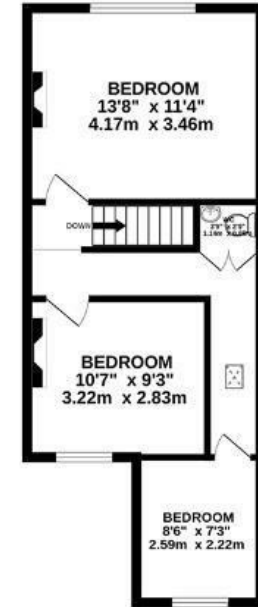
APPROXIMATE FLOOR AREA  
107.8 SQM / 1161 SQFT



GROUND FLOOR



FIRST FLOOR



**Boardwalk**

# Grove Park

FISHPONDS, BRISTOL

£

£450,000

z z z

3 Bedrooms

📍

BS16 2BL

🦆

2 Bathrooms

*"I love the location, it's close to the Frome Valley, and within minutes you can be away from all the city sounds and immersed in nature by the river. The street has a lovely community vibe, and a street whatsapp group. I used to have a very productive veg patch on the side plot of the house."*

