

# EUGEN COTORANU

*Personal Estate Agent*  
exp

Millman Court, Bloomsbury - Prime Central London

Guide Price: £600,000-£625,000

2 1 1



A rare Bloomsbury opportunity in the heart of Central London.  
With a private balcony, beautiful communal gardens and world-class amenities on your doorstep,  
you'll be hard pressed to find a better option.

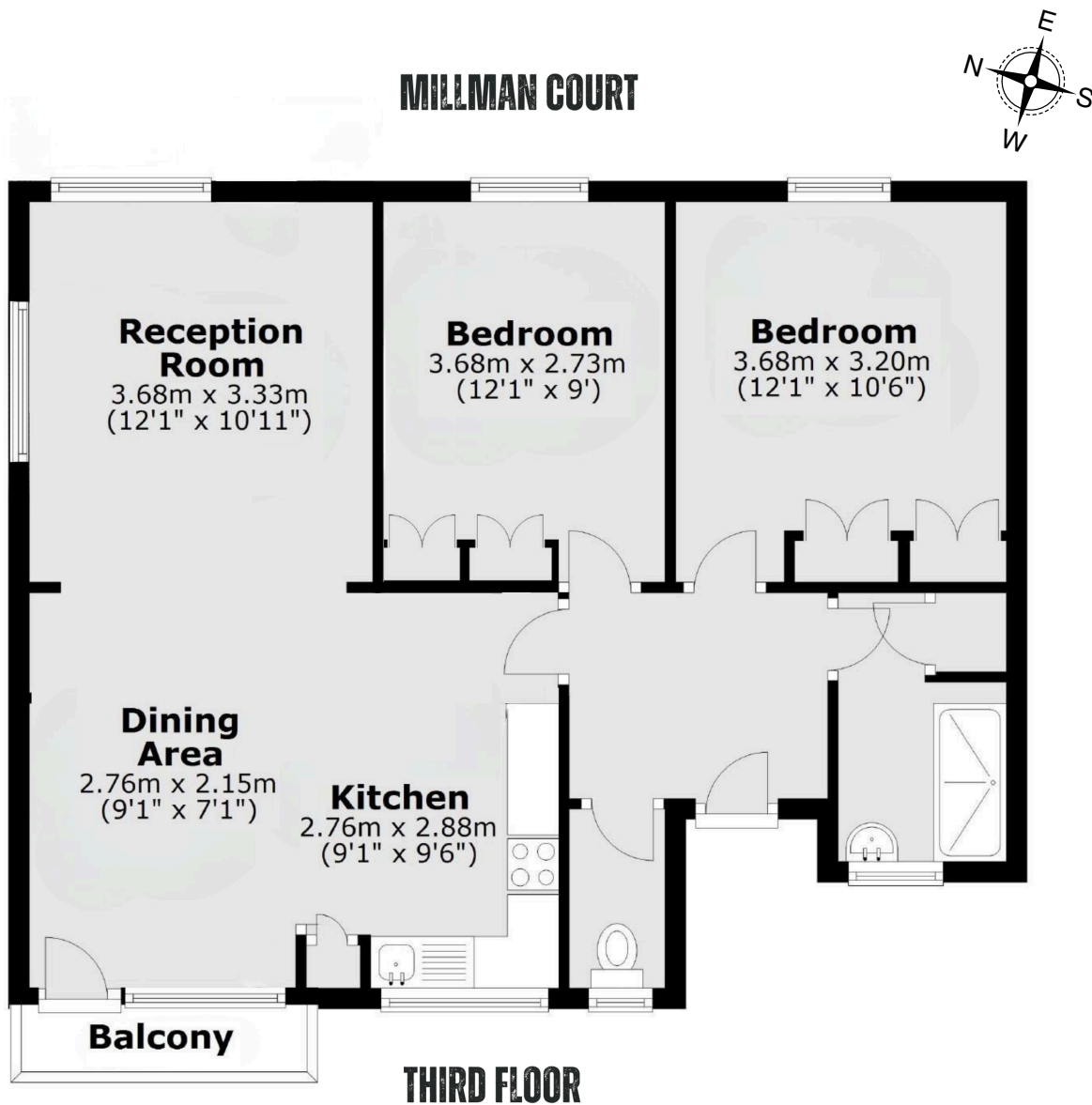
**SELL | BUY | LET | INVEST**  
07774807085 | [eugen.cotoranu@exp.uk.com](mailto:eugen.cotoranu@exp.uk.com)

# EUGEN COTORANU

*Personal Estate Agent*

**exp**

- Please Quote EC0801
- Long lease
- Excellent transport links
- Open-plan kitchen/dining area
- 90% Congestion Charge discount
- Guide Price: £600,000-£625,000
- Private balcony
- Beautiful communal gardens
- Chain free | Vacant possession
- Potential to create a 3-bedroom home



Total area: approx. 67.0 sq. metres (721.2 sq. feet)

**SELL | BUY | LET | INVEST**

07774807085 | eugen.cotoranu@exp.uk.com